

# ADAPTIVE








*Adaptive Micro Systems Europe*

Industrial Keypad

# ALPHARhea

Software Configuration



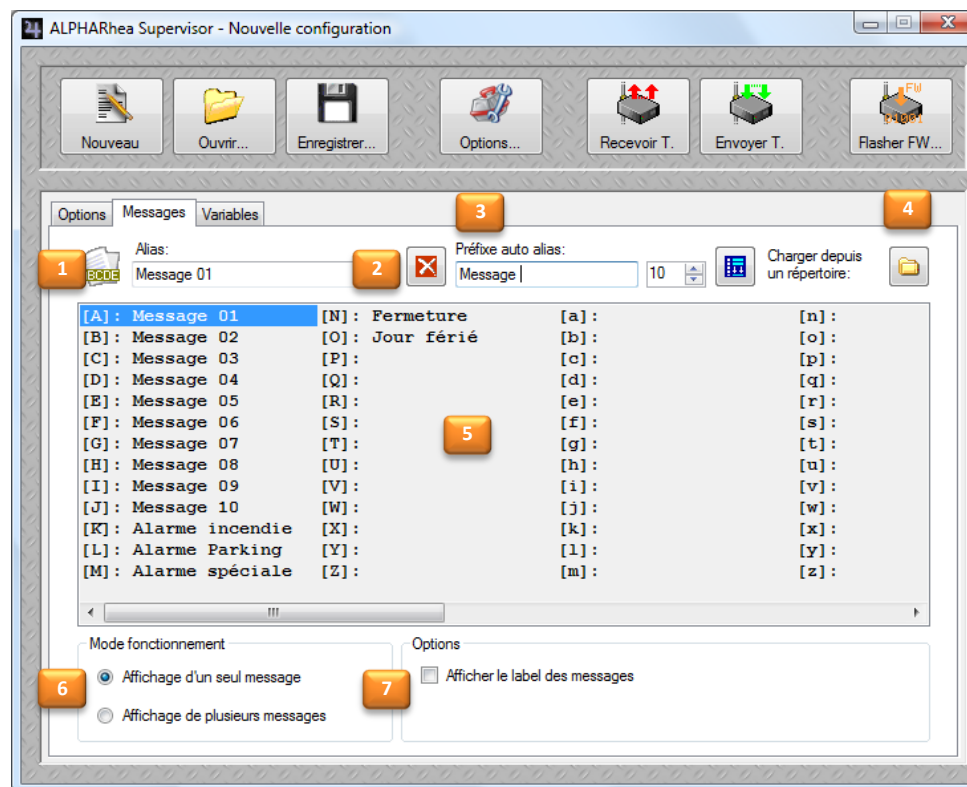
-  Main window – Tool bar
-  Main window – Options
-  Main window – Messages
-  Main window – Variables
-  Options – Versions & Language
-  Options – Communication ports
-  Corresponding of ID Messages & Variables



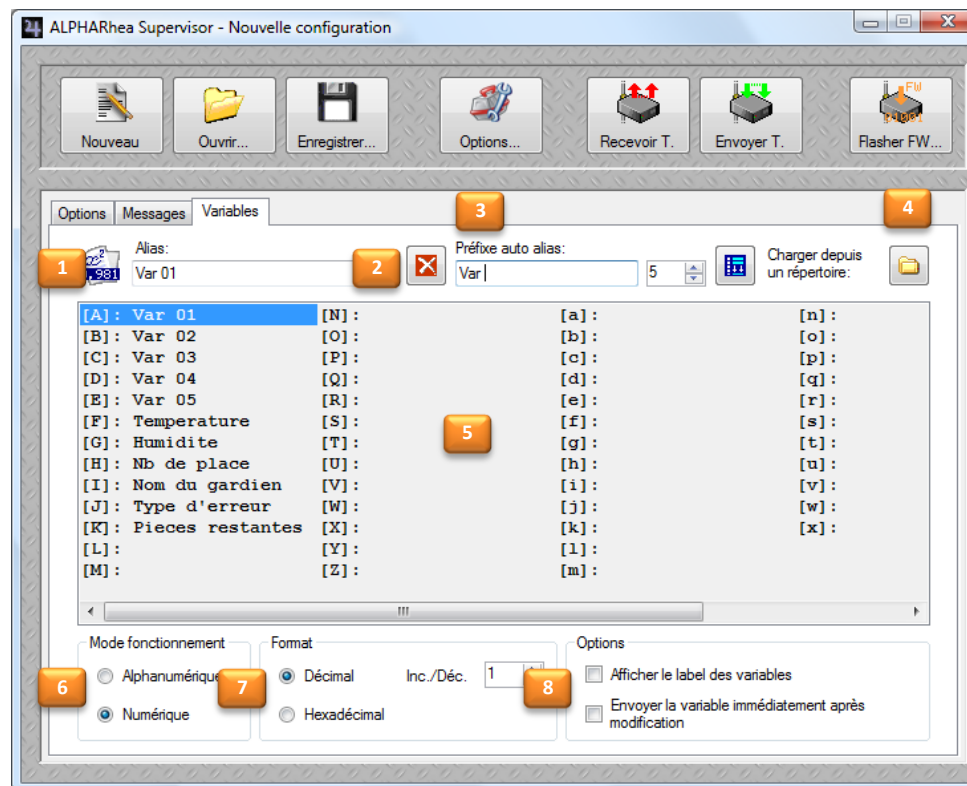
#	Description
1	Create a new configuration.
2	Open an existing *.XML configuration file located in the ...\\Workspace\\MyXMLFiles directory.
3	Save the current configuration to either the same or a new name.
4	Options for configuring and using the application: <ul style="list-style-type: none"> <li>• Versions</li> <li>• Language</li> <li>• Communication port</li> </ul>
5	Receive the ALPHARhea configuration.
6	Send the ALPHARhea configuration.
7	Update the ALPHARhea Firmware. <b>During this operation the module has to not be interrupted!!!</b>



#	Description
1	Selection of the main window: Options – Messages – Variables
2	Physical connection's type.
3	Protocol and default sign's address: <ul style="list-style-type: none"> <li>• Address HEXA (00 - FF) for ALPHA sign</li> <li>• Address IP (XXX-XXX-XXX-XXX) for EXCITE sign</li> </ul>
4	General options: <ul style="list-style-type: none"> <li>• Screen saver data</li> <li>• ALPHACallisto Mode in order to connect the sign through an ALPHACallisto interface</li> </ul>
5	Download the ALPHARhea's HMI language.

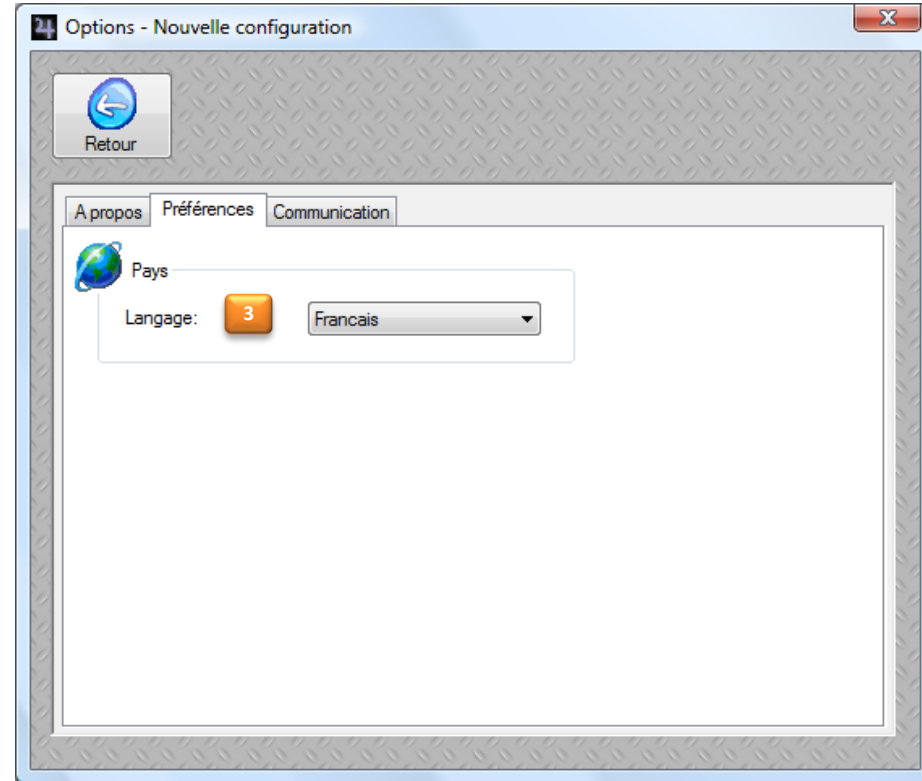
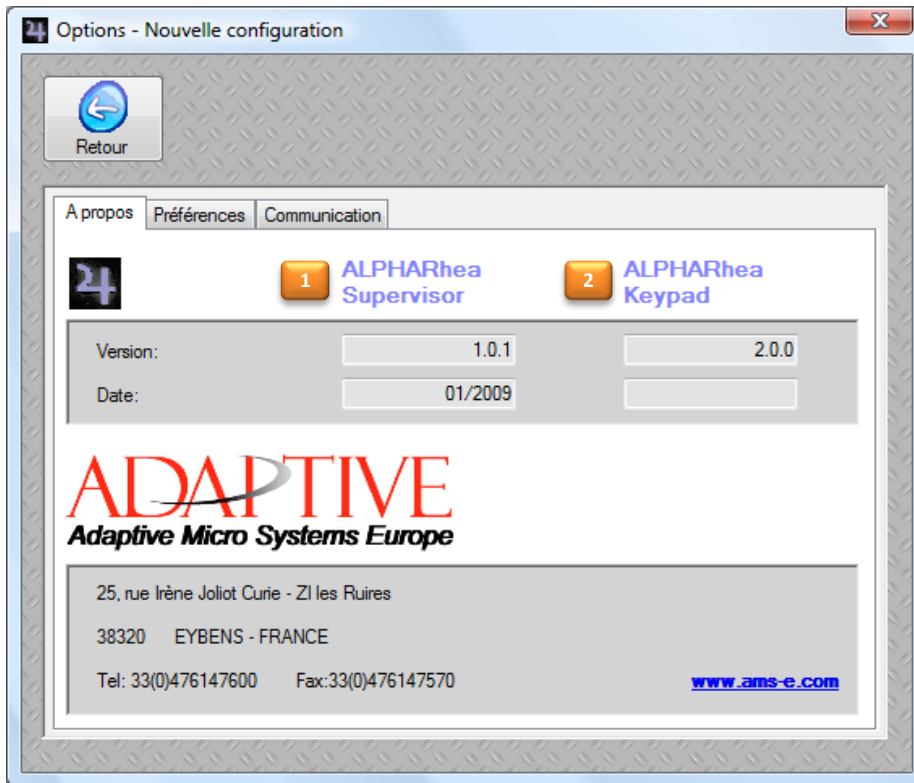


#	Description
1	Edit the alias of the selected message.
2	Clear all message aliases.
3	Auto fill message aliases.
4	Load aliases from a working directory where messages created either with ALPHANet PRO or Ooh!Media are located.
5	Message's aliases .
6	Operating Mode: <ul style="list-style-type: none"> <li>• Only the last triggered message is displayed on the sign</li> <li>• Several messages can be triggered simultaneously on the sign</li> </ul>
7	The message's ID is displayed on the ALPHARhea (ALPHA signs).



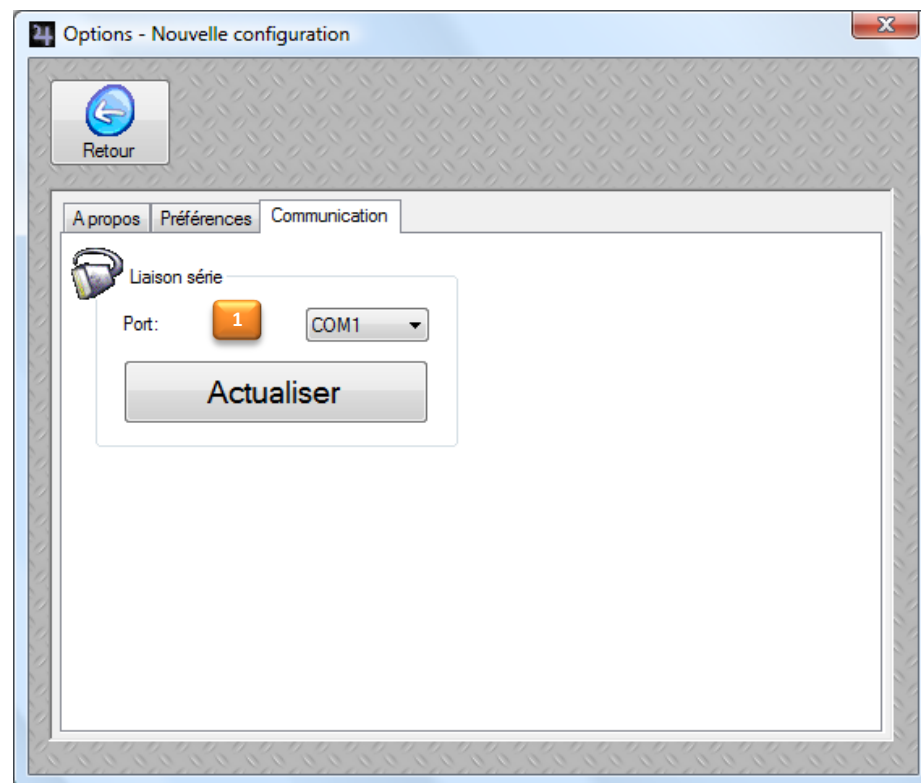
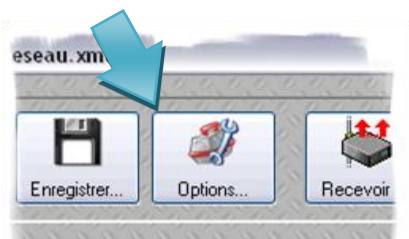
#	Description
1	Edit the alias of the selected variable.
2	Clear all variable aliases.
3	Auto fill variable aliases.
4	Load aliases from the variable file generated with ALPHANet PRO.
5	Variable's aliases .
6	Operating Mode: <ul style="list-style-type: none"> <li>Alphanumeric mode allows editing character string</li> <li>Numeric mode allows editing integer variables (0 -&gt; 65535)</li> </ul>
7	Variable's format HEXA or DECIMAL – Increment value
8	The variable's ID is displayed on the ALPHARhea (ALPHA signs). Auto send the variable to the sign just after each editing

# Options – Versions & Language



#	Description
3	Language used in the HMI. Changing this parameter requires to close the application and run it again.

#	Description
1	ALPHARhea Supervisor software version (PC).
2	ALPHARhea firmware version.



#

D e s c r i p t i o n

1 Serial communication port of PC used to communicate with ALPHARh a.

The file label where is saved each Message & Variable is defined by **ALPHANet PRO** software.

AlphaNet Pro  
Wizard de Transfert de Message(s)  
Ce wizard vous permet de transférer le(s) message(s) sélectionné(s) vers un/des afficheur(s)/groupe(s) d'afficheurs

Type  
Séquence d'exécution  
Avancé

Table Séquence d'exécution:

#	Identité
A	Message #1.xml
B	Message #2.xml
C	Message #3.xml
D	Message #4.xml
E	Message #5.xml
F	Message #6.xml
G	Message #7.xml
H	Message #8.xml
I	
J	
K	
L	

Monter  
Descendre  
Copier  
Coller  
Supprimer

Messages configuration

ID	Label
1	A
2	B
3	C
4	D
5	E
6	F
7	G
8	H
...	...

AlphaNet Pro  
Fichier Edition Affichage Insérer Outils Aide

Messages Groupes Messages Afficheurs Groupes Afficheurs Drivers Variables Compteurs Trace

Propriétés

Fichiers: 1 élément(s)

Table	Alias	Taille	Valeur par défaut
A	<input checked="" type="checkbox"/> DI-CPTA	6	-
B	<input checked="" type="checkbox"/> DI-CPTB	6	-
C	<input checked="" type="checkbox"/> DI-LUV	6	-
D	<input checked="" type="checkbox"/> AI-TEMP	6	-
E	<input checked="" type="checkbox"/> AI-POTAR	6	-
F	<input type="checkbox"/>	0	
G	<input type="checkbox"/>	0	
H	<input type="checkbox"/>	0	
I	<input type="checkbox"/>	0	
J	<input type="checkbox"/>	0	
K	<input type="checkbox"/>	0	
L	<input type="checkbox"/>	0	
M	<input type="checkbox"/>	0	
N	<input type="checkbox"/>	0	
O	<input type="checkbox"/>	0	

Identité Table

Variables configuration