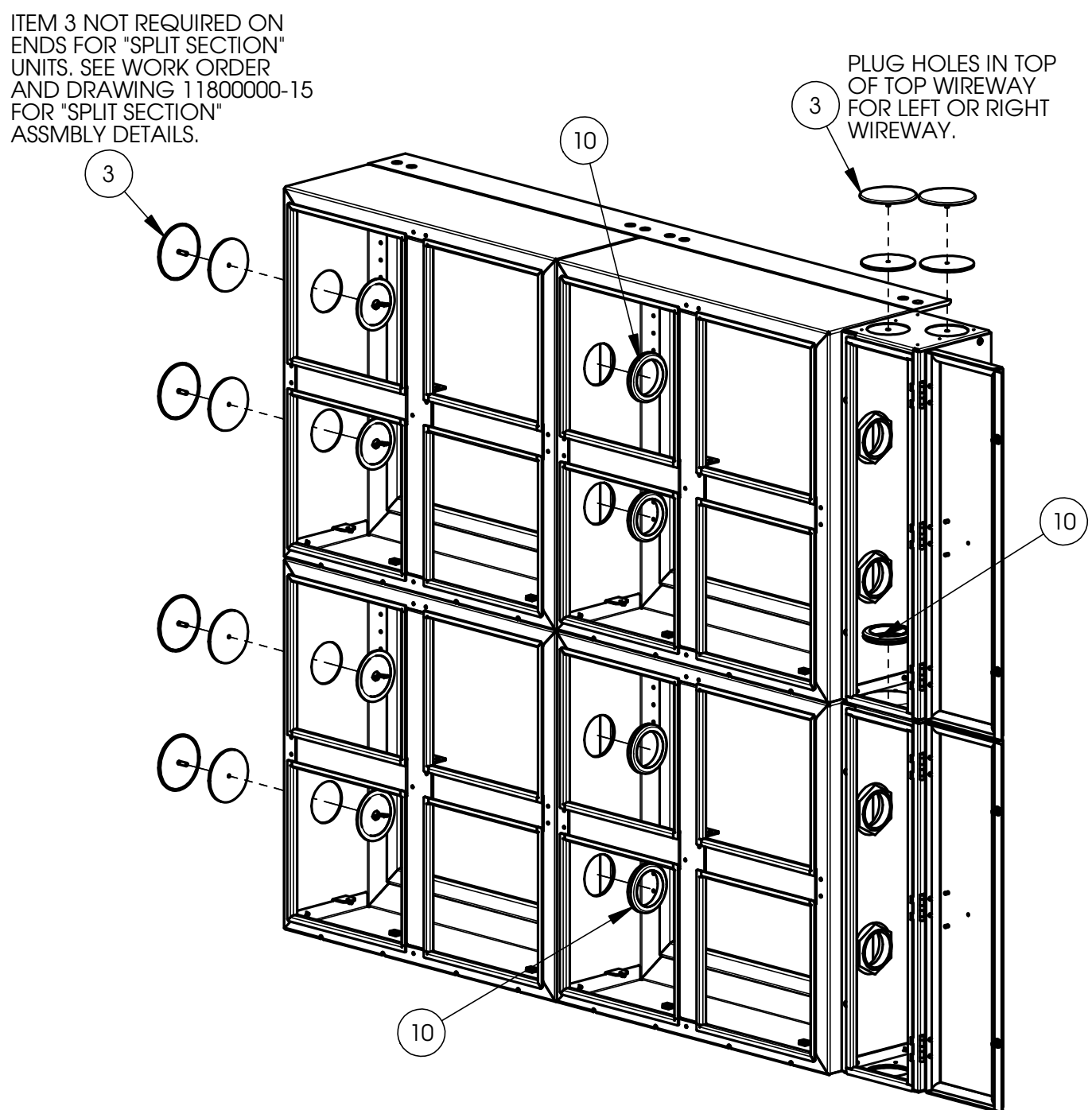
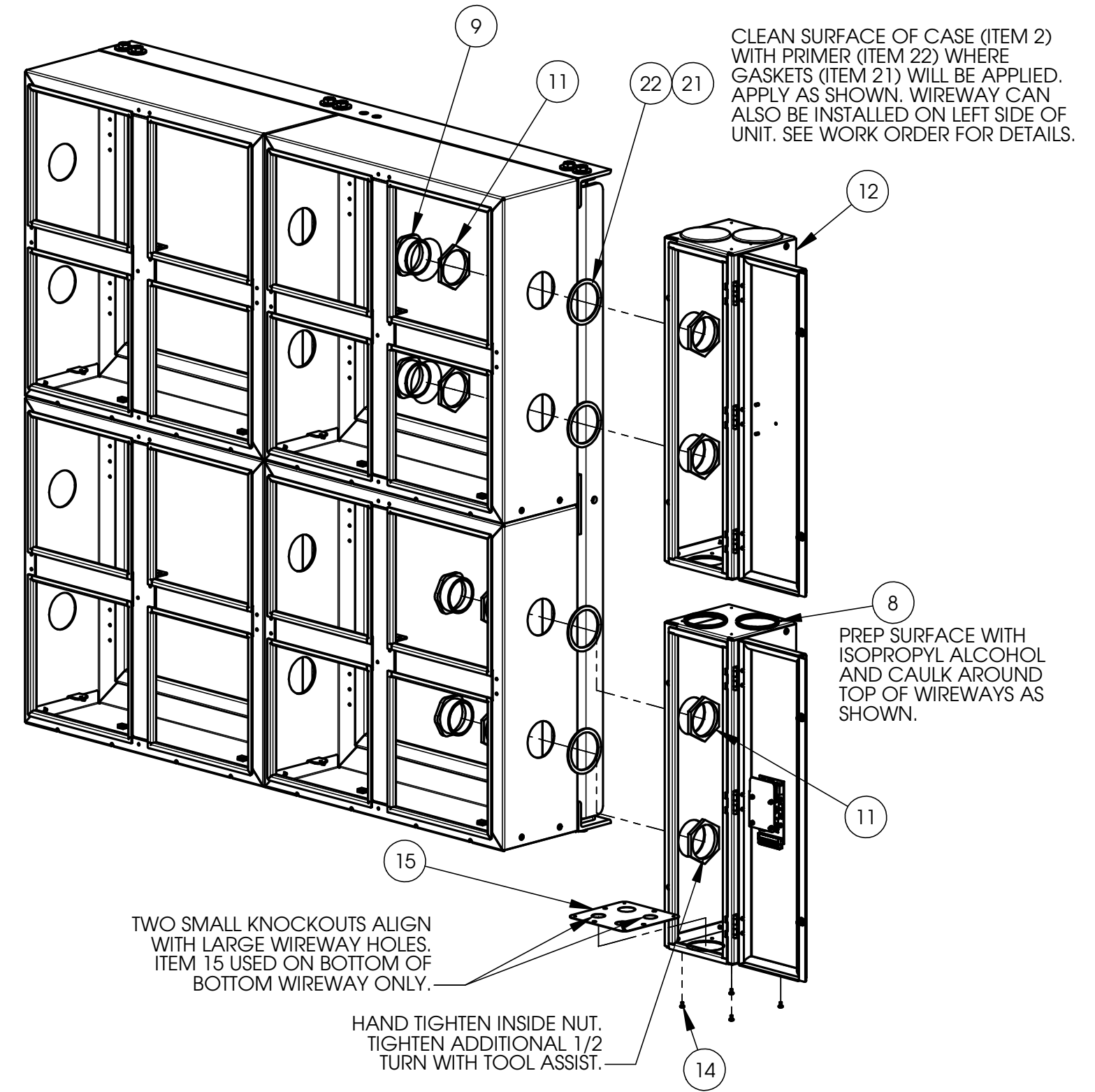
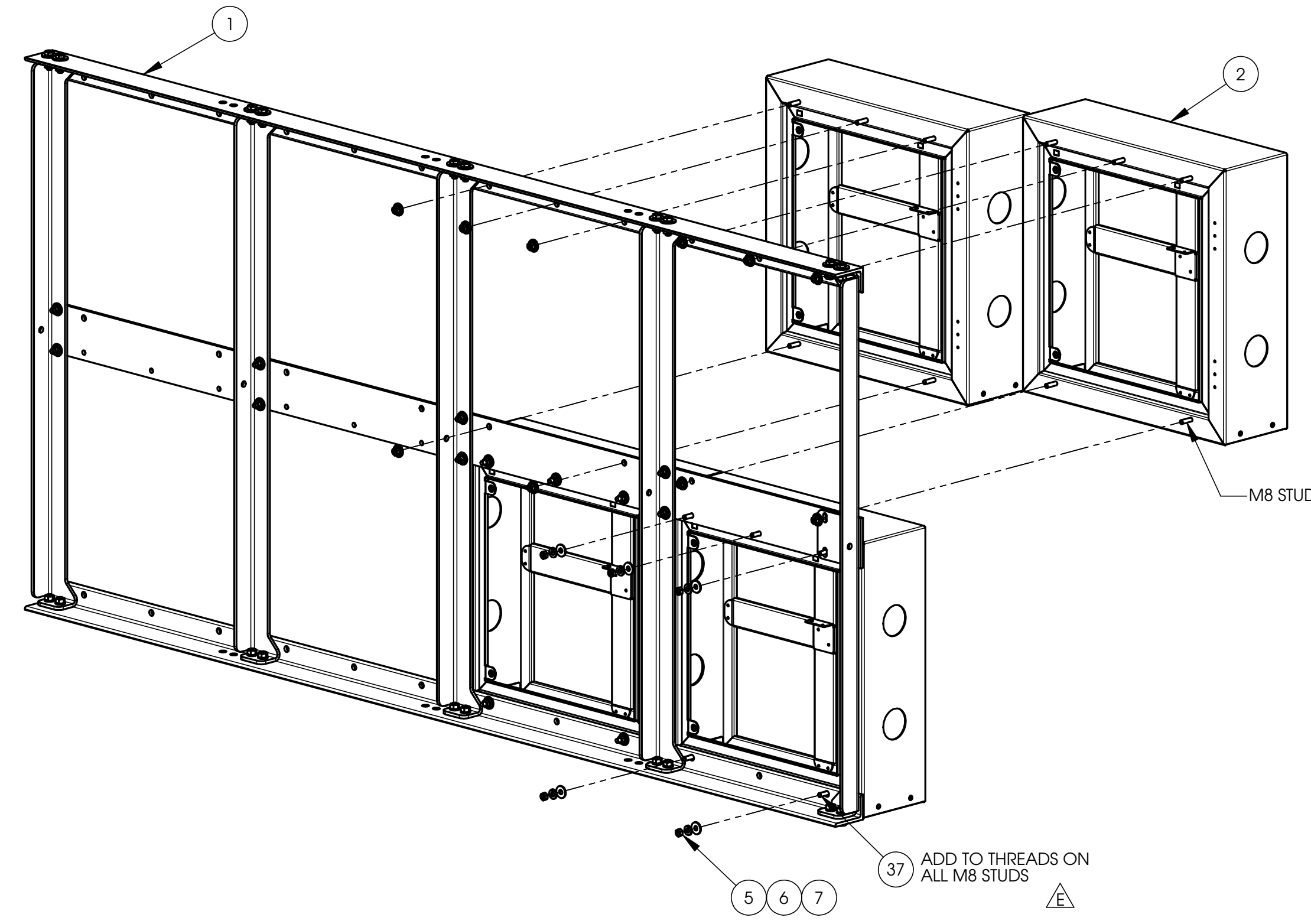


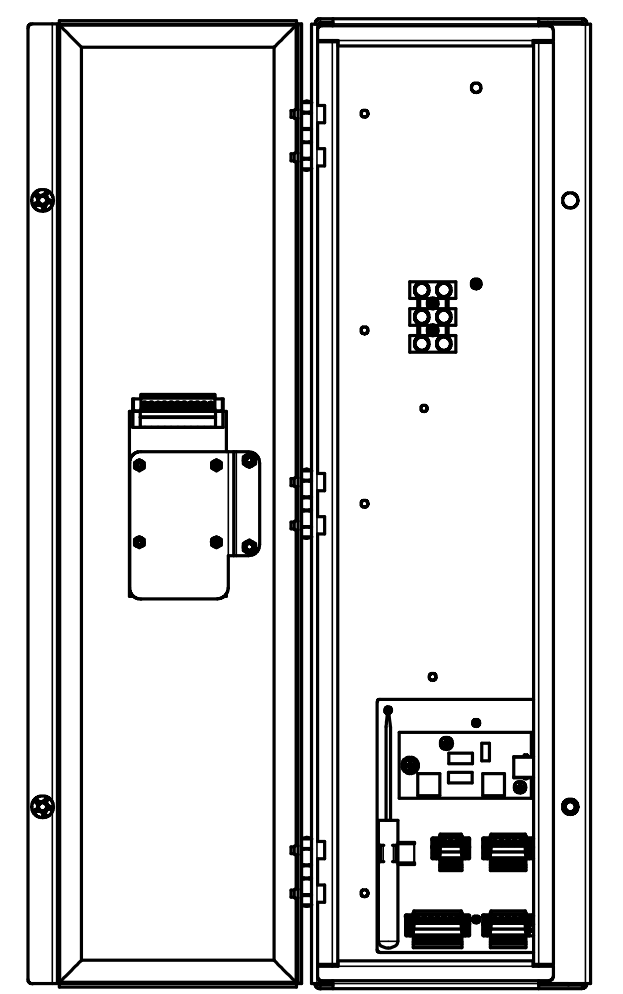
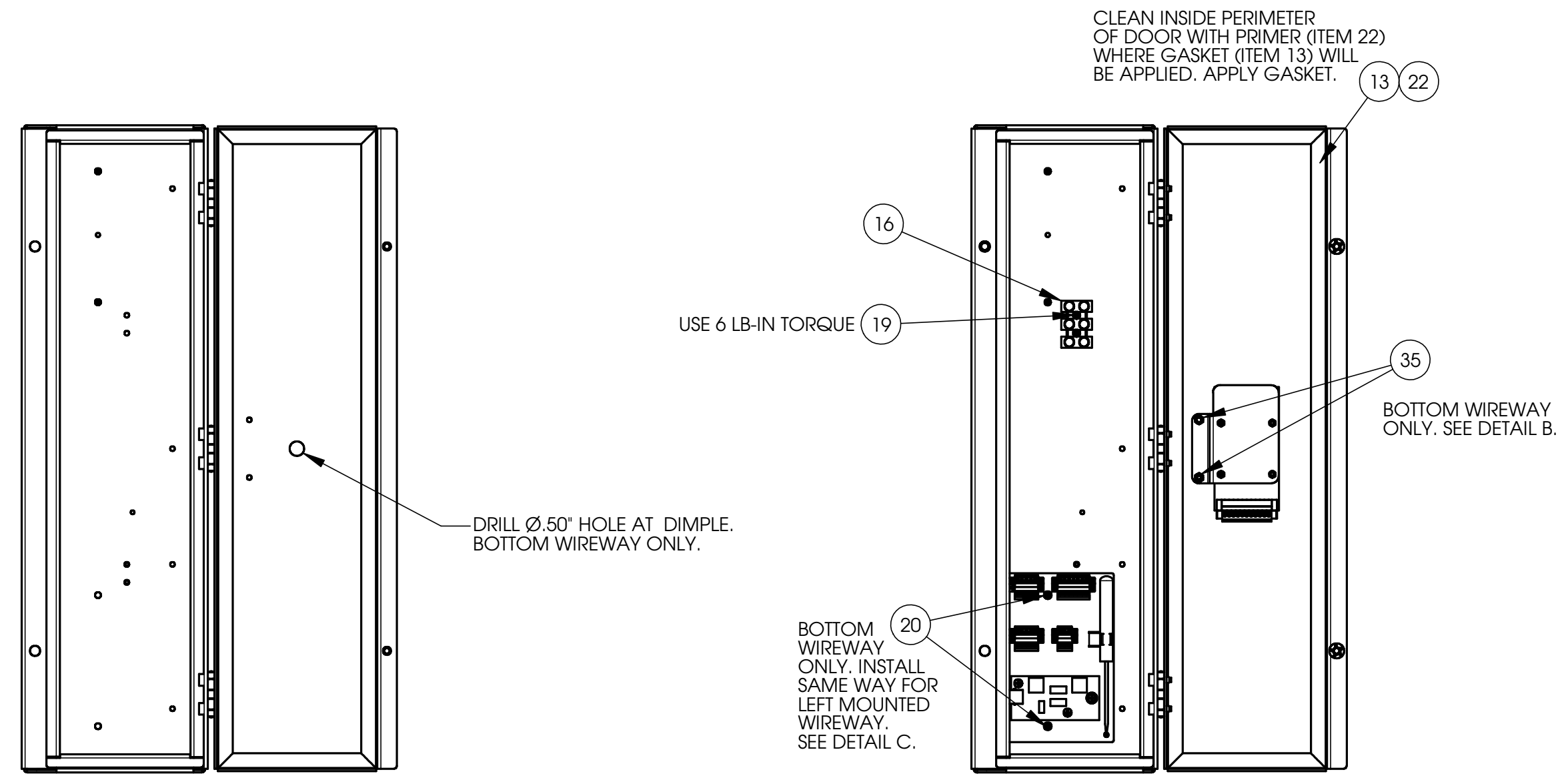
SAFETY CRITICAL CHART

LOC	DESCRIPTION
E10	ITEM 13 MUST BE FREE OF DEFECTS (CORNERS) AND AFFIXED PROPERLY TO DOOR
G5	MUST HAVE GASKET (ITEM 8) BETWEEN EACH WIREWAY CONNECTION HOLE



REVERSE FOR OPTIONAL LEFT SIDE WIREWAY INSTALLATION.

REVERSE FOR OPTIONAL LEFT SIDE WIREWAY INSTALLATION.

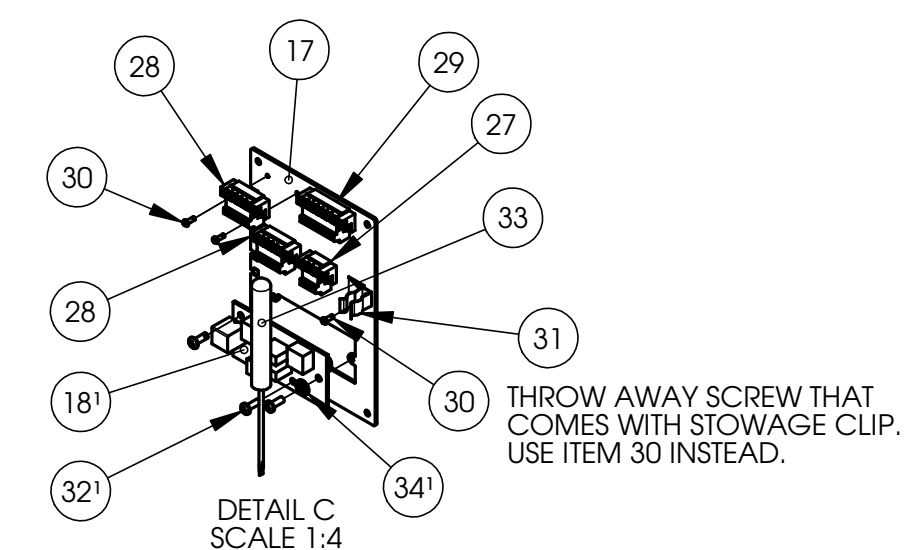
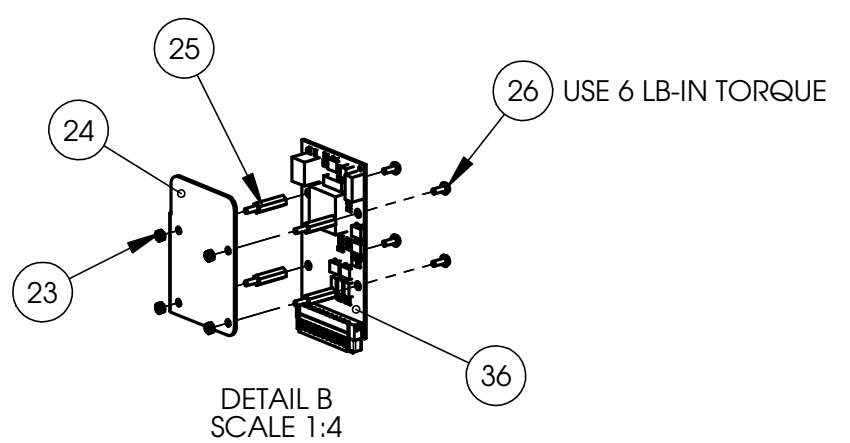
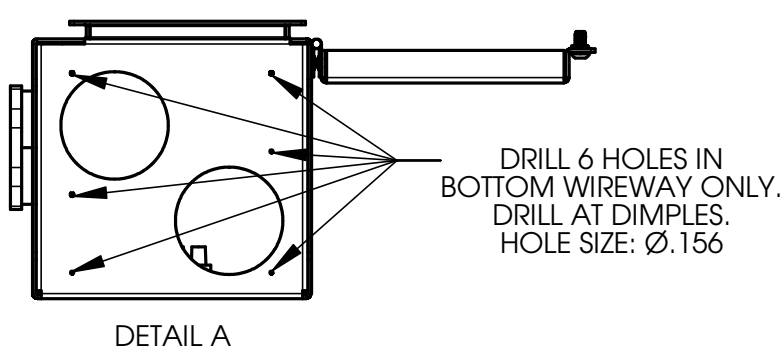


TORQUE SPECS ±10% UNLESS OTHERWISE SPECIFIED	
SIZE	TORQUE LB-IN
#2	2
M3	12
#6 SWAGEFORM	6
M5 WING NUT	12
M8	125

WIREWAY SHOWN WITH DOOR OPEN 180°

RIGHT BOTTOM WIREWAY REFER TO 11800000-05

OPTIONAL LEFT BOTTOM WIREWAY REFER TO 11800000-22



ITEM NO.	PART NO.	DESCRIPTION
1	11800000-02	STRUCTURAL SUPPORT ASY DOCUMENT
2	11800000-03	SINGLE CUBE ASY WITH ELECTRONICS DOCUMENT
3	68118045	CUBE ASY, COMPLETE SHEETMETAL, P1180
4	11809009	ASSEMBLY, HOLE PLUG, M5 STUD
5	*	DISPLAY CUBE ASY, POTTED w/LOUVER, P1180
6	62512610	NUT, HEX, LOCK, NYLON INSERT, M8, 18-8 SS, BLK
7	61820035	WASHER, SPLIT LOCK, M8, 18-8 SS, BLK OXIDE
8	61820032	WASHER, LARGE FLAT, M8, 18-8 SS, BLACK OXIDE
9	66020024	ADHESIVE, SEALANT, 3M 540 BLK, POLYURETHANE
10	64000018	CONDUIT NIPPLE, 2, DIE CAST ZINC, THREADED
11	63120007	GROMMET, RUBBER, 2.125ID, 2.875OD, 0.437THK
12	64000019	CONDUIT FITTING, LOCKNUT, 2, DIE CAST ZINC
13	68118082	WIREWAY ASY, SQUARE, WELDED, ALUM, P1180
14	63321055	GASKET, WIREWAY SEALED CORNERS, EPDM, P1180
15	61210758	SCREW, #6x0.25, TYPE B, SELF-TAP, PPH, BLACK
16	68118090	PLATE, WIREWAY KNOCK-OUT, P1180
17	*	TERMINAL BLOCK, 1.5mm SP, 40A, UL/V/DE
18	68118092	PLATE, WIREWAY TERMINAL BLOCK, P1180
19	11709021	PCB ASY, TELEPHONE SURGE SUPPRESSOR
20	61230690	SCREW, M3x0.5x16mm, PPH, 18-8 SS, INT SEMS
21	61230696	SCREW, M3x0.5x8mm, PPH, 18-8 SS, INT SEMS
22	63320017	GASKET, 2.5" I.D., 3.0" O.D., W/PSA, P1180
23	67000005	CHEMICAL TAPE PRIMER STICK
24	61620022	NUT, M3x0.5, HEX, KEPS, 18-8 SS
25	68118083	BRACKET, LIGHT SENS, WIREWAY DOOR, AL, P1180
26	63040001	SPACER, M3x20mm, MALE/FEMALE HEX, SS
27	61230696	SCREW, M3x0.5x8mm, PPH, 18-8 SS, INT SEMS
28	43201065	TERMINAL BLOCK, 3POS, PNL MNT, 3.81mm
29	71220501	WIRE ASY, 75, 22AWG, 5POS TB
30	71220708	WIRE ASY, 75, 22AWG, 7POS TB
31	61210345	SCREW, 2-56x0.25, PPH, TAPTITE ZINC PLATING
32	61910018	STOWAGE CLIP, ARTHUR PLATT, #28
33	61211003	SCREW, SWAGEFORM, 6-32x3/8, PPH, ZINC
34	62600005	SCREWDRIVER, 2.5mm TECH BLADE, 5.5 IN LONG
35	61810621	WASHER, LOCK, #6, EXTERNAL TOOTH
36	61620025	NUT, KEPS, HEX, M4x0.7, 18-8 SS
37	11809022	PCB ASY, TEMP/LIGHT SENSOR, RS-485
	67000012	CHEMICAL, ANTI-SEIZE, COPPER GRADE, 2.25 OZ

* 1/PHONE MODEM KIT ONLY
* SEE WORK ORDER

REV	DESCRIPTION	ECO	BY	DATE
E	ADDED ITEM 37, ADDED VIEW TO SHOW OPTIONAL LEFT WIREWAY MOUNTING.	8607	SSL	2/26/04
D	UPDATED NOTES TO ADD LEFT WIREWAY OPTION AND SETUP FOR 'SPLIT SECTION' UNITS. CHANGE ITEM 7. ADDED TORQUE CHART. ADD ITEMS 8 AND 36. UPDATED ITEM 16.	8389	SSL	11/20/03
C	ADDED 180° VIEW WITH DOOR OPEN. ADDED INSTALL INSTRUCTIONS. ADDED ITEMS TO BOM.	8131	JES	9/18/03
B	REMOVED DUAL DIMENSIONS. UPDATED TOLERANCES. ADDED TORQUE SPECS. CAULK NOTES ON WIREWAY. ADDED Q/S CRITICAL CHART. ADDED ITEMS 14 AND 15.	7992	SAA	5/14/03
A	RELEASED FOR PRODUCTION.	SAA		3/7/03

8607	SSL	2/26/04	8607	SSL	2/26/04
DIMENSIONS ARE INCH AND TOLERANCES ARE AS FOLLOWS UNLESS OTHERWISE SPECIFIED		X ±0.1		X ±0.02	
		X ±0.05		X ±1°	
DRAWN BY: SAA		DATE: 12/10/02		TITLE: P1180 CUBE CONNECT TO STRUCTURAL SUPPORT	
CHECKED BY: SAA		DATE:		REVISION: D	
APPROVED BY: SAA		DATE:		DOCUMENT NO.: 11800000-01	
SCALE: 1:1		STATUS: Released		REV: E	
SHEET: 1 of 1		DATE:		DATE:	