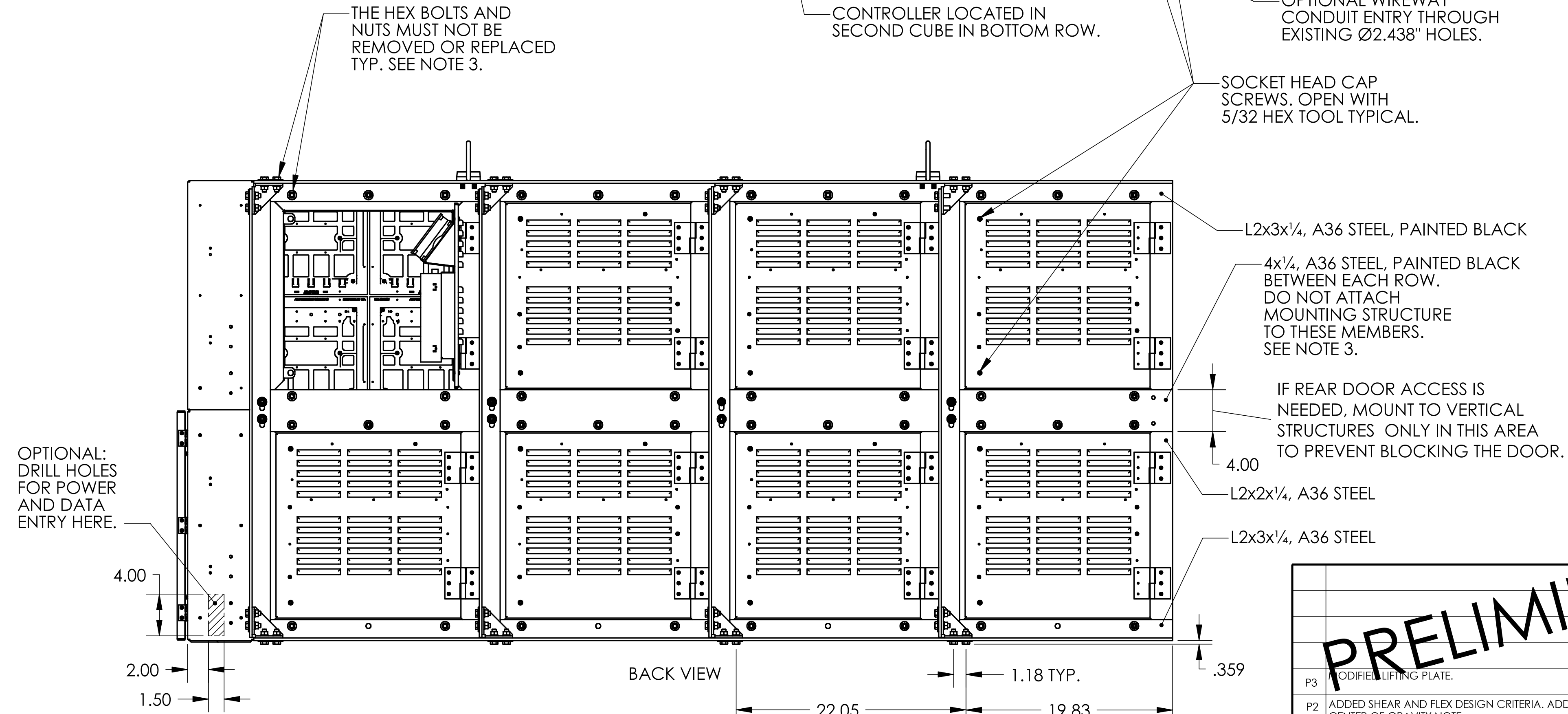
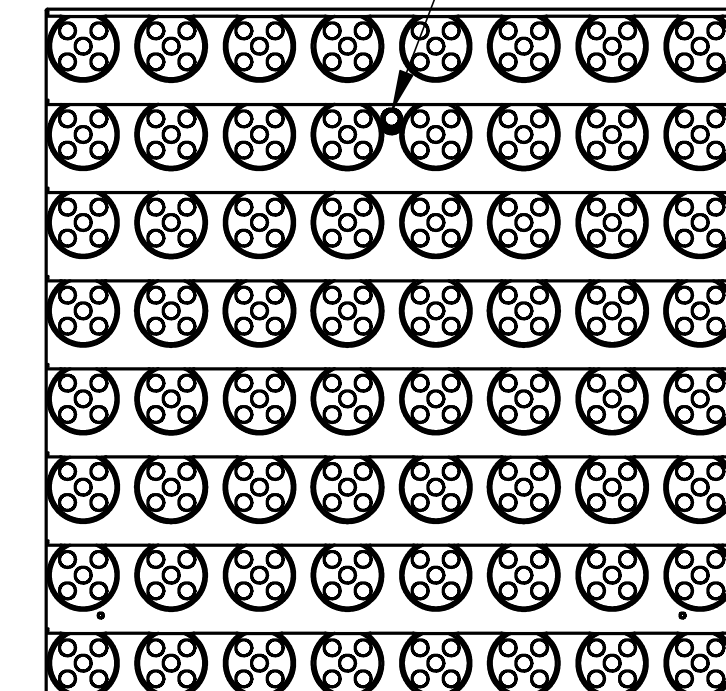


HEX TOOL INSTALLATION LOCATION. 1/4 TURN TO REMOVE 8x8 DISPLAY DRIVER.



**PRELIMINARY**

DIMENSIONS ARE INCH				ADAPTIVE	
REV.	DESCRIPTION	ECO	BY	DATE	7840 North 86th Street Milwaukee, WI 53224 USA
P3	MODIFIED LIFTING PLATE.		SSL	4/1/03	TITLE: ALPHA ECLIPSE 3600 MECHANICAL DETAILS SIZE: C DOCUMENT NO. 11800000-07 REVISION P3 SCALE: 1:10 STATUS: SHT 1 of 2
P2	ADDED SHEAR AND FLEX DESIGN CRITERIA. ADDED CENTER OF GRAVITY NOTE.		SSL	3/31/03	
P1	RELEASED FOR PROTOTYPE		SSL	3/18/03	
			DRAWN BY	DATE	
			CHECKED BY	DATE	
			APPROVED BY	DATE	

THIS DRAWING IS THE PROPERTY OF AMS INC. AND SHALL NOT BE DUPLICATED WITHOUT PERMISSION