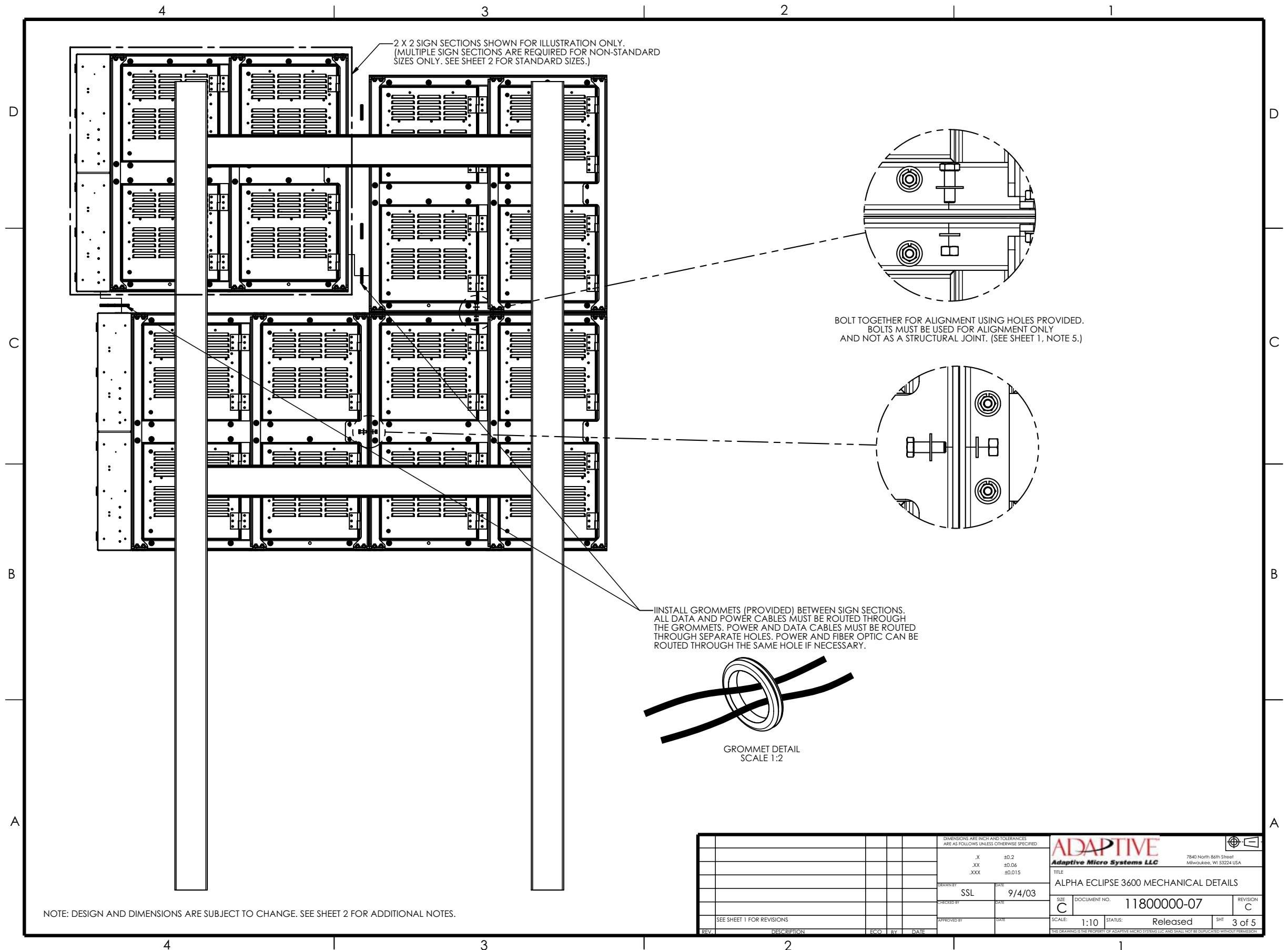


DIMENSIONS ARE INCH AND TOLERANCES ARE AS FOLLOWS UNLESS OTHERWISE SPECIFIED:		<b>ADAPTIVE</b> Adaptive Micro Systems LLC	
.X	±0.2	7840 North Bath Street Milwaukee, WI 53224 USA	
.XX	±0.06	TITLE	
.XXX	±0.015	ALPHA ECLIPSE 3600 MECHANICAL DETAILS	
DRAWN BY	DATE	SIZE	REVISION
SSL	9/4/03	C	11800000-07
CHECKED BY	DATE	SCALE:	STATUS:
		1:12	Released
APPROVED BY	DATE	SHEET	2 of 5



DIMENSIONS ARE INCH AND TOLERANCES ARE AS FOLLOWS UNLESS OTHERWISE SPECIFIED:		<b>ADAPTIVE</b> Adaptive Micro Systems LLC 7840 North 86th Street Milwaukee, WI 53224 USA	
X	±0.2	TITLE ALPHA ECLIPSE 3600 MECHANICAL DETAILS	
XX	±0.06	SIZE C	DOCUMENT NO. 11800000-07
XXX	±0.015	REVISION C	SCALE: 1:10 STATUS: Released
DRAWN BY SSL	DATE 9/4/03	SHEET 3 of 5	
CHECKED BY	DATE	THIS DRAWING IS THE PROPERTY OF ADAPTIVE MICRO SYSTEMS LLC AND SHALL NOT BE DUPLICATED WITHOUT PERMISSION.	
APPROVED BY	DATE		
REV	DESCRIPTION	EQD	BY DATE

4

3

2

1

D

D

C

C

B

B

A

A

MODEL #	120-VAC										TOTAL
	CIRCUIT 1	CIRCUIT 2	CIRCUIT 3	CIRCUIT 4	CIRCUIT 5	CIRCUIT 6	CIRCUIT 7	CIRCUIT 8	CIRCUIT 9	CIRCUIT 10	
<b>16 Pixels High - RGB</b>											
1180 36 01 016 016 RGB	2.8	N/A	N/A	N/A	N/A	N/A	N/A	N/A	N/A	N/A	2.8
1180 36 01 032 016 RGB	5.5	N/A	N/A	N/A	N/A	N/A	N/A	N/A	N/A	N/A	5.5
1180 36 01 048 016 RGB	8.3	N/A	N/A	N/A	N/A	N/A	N/A	N/A	N/A	N/A	8.3
1180 36 01 064 016 RGB	11.1	N/A	N/A	N/A	N/A	N/A	N/A	N/A	N/A	N/A	11.1
1180 36 01 080 016 RGB	13.9	N/A	N/A	N/A	N/A	N/A	N/A	N/A	N/A	N/A	13.9
1180 36 01 096 016 RGB	16.6	N/A	N/A	N/A	N/A	N/A	N/A	N/A	N/A	N/A	16.6
1180 36 01 112 016 RGB	19.4	N/A	N/A	N/A	N/A	N/A	N/A	N/A	N/A	N/A	19.4
1180 36 01 128 016 RGB	22.2	N/A	N/A	N/A	N/A	N/A	N/A	N/A	N/A	N/A	22.2
1180 36 01 144 016 RGB	22.2	2.8	N/A	N/A	N/A	N/A	N/A	N/A	N/A	N/A	24.9
1180 36 01 160 016 RGB	22.2	5.5	N/A	N/A	N/A	N/A	N/A	N/A	N/A	N/A	27.7
1180 36 01 176 016 RGB	22.2	8.3	N/A	N/A	N/A	N/A	N/A	N/A	N/A	N/A	30.5
<b>32 Pixels High - RGB</b>											
1180 36 01 016 032 RGB	5.5	N/A	N/A	N/A	N/A	N/A	N/A	N/A	N/A	N/A	5.5
1180 36 01 032 032 RGB	11.1	N/A	N/A	N/A	N/A	N/A	N/A	N/A	N/A	N/A	11.1
1180 36 01 048 032 RGB	16.6	N/A	N/A	N/A	N/A	N/A	N/A	N/A	N/A	N/A	16.6
1180 36 01 064 032 RGB	22.2	N/A	N/A	N/A	N/A	N/A	N/A	N/A	N/A	N/A	22.2
1180 36 01 080 032 RGB	13.9	13.9	N/A	N/A	N/A	N/A	N/A	N/A	N/A	N/A	27.7
1180 36 01 096 032 RGB	16.6	16.6	N/A	N/A	N/A	N/A	N/A	N/A	N/A	N/A	33.2
1180 36 01 112 032 RGB	19.4	19.4	N/A	N/A	N/A	N/A	N/A	N/A	N/A	N/A	38.8
1180 36 01 128 032 RGB	22.2	22.2	N/A	N/A	N/A	N/A	N/A	N/A	N/A	N/A	44.3
1180 36 01 144 032 RGB	13.9	22.2	13.9	N/A	N/A	N/A	N/A	N/A	N/A	N/A	49.9
1180 36 01 160 032 RGB	16.6	22.2	16.6	N/A	N/A	N/A	N/A	N/A	N/A	N/A	55.4
1180 36 01 176 032 RGB	19.4	22.2	19.4	N/A	N/A	N/A	N/A	N/A	N/A	N/A	60.9
<b>48 Pixels High - RGB</b>											
1180 36 01 016 048 RGB	8.3	N/A	N/A	N/A	N/A	N/A	N/A	N/A	N/A	N/A	8.3
1180 36 01 032 048 RGB	16.6	N/A	N/A	N/A	N/A	N/A	N/A	N/A	N/A	N/A	16.6
1180 36 01 048 048 RGB	11.1	13.9	N/A	N/A	N/A	N/A	N/A	N/A	N/A	N/A	24.9
1180 36 01 064 048 RGB	16.6	16.6	N/A	N/A	N/A	N/A	N/A	N/A	N/A	N/A	33.2
1180 36 01 080 048 RGB	22.2	19.4	N/A	N/A	N/A	N/A	N/A	N/A	N/A	N/A	41.6
1180 36 01 096 048 RGB	16.6	16.6	16.6	N/A	N/A	N/A	N/A	N/A	N/A	N/A	49.9
1180 36 01 112 048 RGB	19.4	19.4	19.4	N/A	N/A	N/A	N/A	N/A	N/A	N/A	58.2
1180 36 01 128 048 RGB	22.2	22.2	22.2	N/A	N/A	N/A	N/A	N/A	N/A	N/A	66.5
1180 36 01 144 048 RGB	19.4	16.6	19.4	19.4	N/A	N/A	N/A	N/A	N/A	N/A	74.8
1180 36 01 160 048 RGB	22.2	16.6	22.2	22.2	N/A	N/A	N/A	N/A	N/A	N/A	83.1
1180 36 01 176 048 RGB	19.4	22.2	19.4	19.4	11.1	N/A	N/A	N/A	N/A	N/A	91.4
<b>64 Pixels High - RGB</b>											
1180 36 01 016 064 RGB	11.1	N/A	N/A	N/A	N/A	N/A	N/A	N/A	N/A	N/A	11.1
1180 36 01 032 064 RGB	22.2	N/A	N/A	N/A	N/A	N/A	N/A	N/A	N/A	N/A	22.2
1180 36 01 048 064 RGB	16.6	16.6	N/A	N/A	N/A	N/A	N/A	N/A	N/A	N/A	33.2
1180 36 01 064 064 RGB	22.2	22.2	N/A	N/A	N/A	N/A	N/A	N/A	N/A	N/A	44.3
1180 36 01 080 064 RGB	16.6	22.2	16.6	N/A	N/A	N/A	N/A	N/A	N/A	N/A	55.4
1180 36 01 096 064 RGB	22.2	22.2	22.2	N/A	N/A	N/A	N/A	N/A	N/A	N/A	66.5
1180 36 01 112 064 RGB	19.4	19.4	19.4	19.4	N/A	N/A	N/A	N/A	N/A	N/A	77.6
1180 36 01 128 064 RGB	22.2	22.2	22.2	22.2	N/A	N/A	N/A	N/A	N/A	N/A	88.6
1180 36 01 144 064 RGB	19.4	22.2	19.4	19.4	19.4	N/A	N/A	N/A	N/A	N/A	99.7
1180 36 01 160 064 RGB	22.2	22.2	22.2	22.2	22.2	N/A	N/A	N/A	N/A	N/A	110.8
1180 36 01 176 064 RGB	19.4	22.2	19.4	22.2	19.4	N/A	N/A	N/A	N/A	N/A	121.9
<b>80 Pixels High - RGB</b>											
1180 36 01 016 080 RGB	13.9	N/A	N/A	N/A	N/A	N/A	N/A	N/A	N/A	N/A	13.9
1180 36 01 032 080 RGB	13.9	13.9	N/A	N/A	N/A	N/A	N/A	N/A	N/A	N/A	27.7
1180 36 01 048 080 RGB	22.2	19.4	N/A	N/A	N/A	N/A	N/A	N/A	N/A	N/A	41.6
1180 36 01 064 080 RGB	22.2	22.2	11.1	N/A	N/A	N/A	N/A	N/A	N/A	N/A	55.4
1180 36 01 080 080 RGB	13.9	13.9	13.9	13.9	13.9	N/A	N/A	N/A	N/A	N/A	69.3
1180 36 01 096 080 RGB	16.6	16.6	16.6	16.6	16.6	N/A	N/A	N/A	N/A	N/A	83.1
1180 36 01 112 080 RGB	19.4	19.4	19.4	19.4	19.4	N/A	N/A	N/A	N/A	N/A	97.0
1180 36 01 128 080 RGB	22.2	22.2	22.2	22.2	22.2	N/A	N/A	N/A	N/A	N/A	110.8
1180 36 01 144 080 RGB	19.4	11.1	19.4	19.4	16.6	19.4	19.4	N/A	N/A	N/A	124.7
1180 36 01 160 080 RGB	22.2	11.1	22.2	22.2	16.6	22.2	22.2	N/A	N/A	N/A	138.5
1180 36 01 176 080 RGB	8.3	22.2	8.3	22.2	8.3	22.2	8.3	22.2	8.3	22.2	152.4

MODEL #	120-VAC										TOTAL
	CIRCUIT 1	CIRCUIT 2	CIRCUIT 3	CIRCUIT 4	CIRCUIT 5	CIRCUIT 6	CIRCUIT 7	CIRCUIT 8	CIRCUIT 9	CIRCUIT 10	
<b>16 Pixels High - Red/Amber</b>											
1180 36 01 016 016 RED/AMB	1.8	N/A	N/A	N/A	N/A	N/A	N/A	N/A	N/A	N/A	1.8
1180 36 01 032 016 RED/AMB	3.5	N/A	N/A	N/A	N/A	N/A	N/A	N/A	N/A	N/A	3.5
1180 36 01 048 016 RED/AMB	5.3	N/A	N/A	N/A	N/A	N/A	N/A	N/A	N/A	N/A	5.3
1180 36 01 064 016 RED/AMB	7.1	N/A	N/A	N/A	N/A	N/A	N/A	N/A	N/A	N/A	7.1
1180 36 01 080 016 RED/AMB	8.9	N/A	N/A	N/A	N/A	N/A	N/A	N/A	N/A	N/A	8.9
1180 36 01 096 016 RED/AMB	10.6	N/A	N/A	N/A	N/A	N/A	N/A	N/A	N/A	N/A	10.6
1180 36 01 112 016 RED/AMB	12.4	N/A	N/A	N/A	N/A	N/A	N/A	N/A	N/A	N/A	12.4
1180 36 01 128 016 RED/AMB	14.2	N/A	N/A	N/A	N/A	N/A	N/A	N/A	N/A	N/A	14.2
1180 36 01 144 016 RED/AMB	15.9	N/A	N/A	N/A	N/A	N/A	N/A	N/A	N/A	N/A	15.9
1180 36 01 160 016 RED/AMB	17.7	N/A	N/A	N/A	N/A	N/A	N/A	N/A	N/A	N/A	17.7
1180 36 01 176 016 RED/AMB	19.5	N/A	N/A	N/A	N/A	N/A	N/A	N/A	N/A	N/A	19.5
<b>32 Pixels High - Red/Amber</b>											
1180 36 01 016 032 RED/AMB	3.5	N/A	N/A	N/A	N/A	N/A	N/A	N/A	N/A	N/A	3.5
1180 36 01 032 032 RED/AMB	7.1	N/A	N/A	N/A	N/A	N/A	N/A	N/A	N/A	N/A	7.1
1180 36 01 048 032 RED/AMB	10.6	N/A	N/A	N/A	N/A	N/A	N/A	N/A	N/A	N/A	10.6
1180 36 01 064 032 RED/AMB	14.2	N/A	N/A	N/A	N/A	N/A	N/A	N/A	N/A	N/A	14.2
1180 36 01 080 032 RED/AMB	17.7	N/A	N/A	N/A	N/A	N/A	N/A	N/A	N/A	N/A	17.7
1180 36 01 096 032 RED/AMB	21.2	N/A	N/A	N/A	N/A	N/A	N/A	N/A	N/A	N/A	21.2
1180 36 01 112 032 RED/AMB	12.4	12.4	N/A	N/A	N/A	N/A	N/A	N/A	N/A	N/A	24.8
1180 36 01 128 032 RED/AMB	14.2	14.2	N/A	N/A	N/A	N/A	N/A	N/A	N/A	N/A	28.3
1180 36 01 144 032 RED/AMB	15.9	15.9	N/A	N/A	N/A	N/A	N/A	N/A	N/A	N/A	31.9
1180 36 01 160 032 RED/AMB	17.7	17.7	N/A	N/A	N/A	N/A	N/A	N/A	N/A	N/A	35.4
1180 36 01 176 032 RED/AMB	19.5	19.5	N/A	N/A	N/A	N/A	N/A	N/A	N/A	N/A	38.9
<b>48 Pixels High - Red/Amber</b>											
1180 36 01 016 048 RED/AMB	5.3	N/A	N/A	N/A	N/A	N/A	N/A	N/A	N/A	N/A	5.3
1180 36 01 032 048 RED/AMB	10.6	N/A	N/A	N/A	N/A	N/A	N/A	N/A	N/A	N/A	10.6
1180 36 01 048 048 RED/AMB	15.9	N/A	N/A	N/A	N/A	N/A	N/A	N/A	N/A	N/A	15.9
1180 36 01 064 048 RED/AMB	21.2	N/A	N/A	N/A	N/A	N/A	N/A	N/A	N/A	N/A	21.2
1180 36 01 080 048 RED/AMB	12.4	14.2	N/A	N/A	N/A	N/A	N/A	N/A	N/A	N/A	26.6
1180 36 01 096 048 RED/AMB	15.9	15.9	N/A	N/A	N/A	N/A	N/A	N/A	N/A	N/A	31.9
1180 36 01 112 048 RED/AMB	19.5	17.7	N/A	N/A	N/A	N/A	N/A	N/A	N/A	N/A	37.2
1180 36 01 128 048 RED/AMB	23.0	19.5	N/A	N/A	N/A	N/A	N/A	N/A	N/A	N/A	42.5
1180 36 01 144 048 RED/AMB	15.9	15.9	15.9	N/A	N/A	N/A	N/A	N/A	N/A	N/A	47.8
1180 36 01 160 048 RED/AMB	17.7	17.7	17.7	N/A	N/A	N/A	N/A	N/A	N/A	N/A	53.1
1180 36 01 176 048 RED/AMB	19.5	19.5	19.5	N/A	N/A	N/A	N/A	N/A	N/A	N/A	58.4
<b>64 Pixels High - Red/Amber</b>											
1180 36 01 016 064 RED/AMB	7.1	N/A	N/A	N/A	N/A	N/A	N/A	N/A	N/A	N/A	7.1
1180 36 01 032 064 RED/AMB	14.2	N/A	N/A	N/A	N/A	N/A	N/A	N/A	N/A	N/A	14.2
1180 36 01 048 064 RED/AMB	21.2	N/A	N/A	N/A	N/A	N/A	N/A	N/A	N/A	N/A	21.2
1180 36 01 064 064 RED/AMB	14.2	14.2	N/A	N/A	N/A	N/A	N/A	N/A	N/A	N/A	28.3
1180 36 01 080 064 RED/AMB	17.7	17.7	N/A	N/A	N/A	N/A	N/A	N/A	N/A	N/A	35.4
1180 36 01 096 064 RED/AMB	21.2	21.2	N/A	N/A	N/A	N/A	N/A	N/A	N/A	N/A	42.5
1180 36 01 112 064 RED/AMB	14.2	21.2	14.2	N/A	N/A	N/A	N/A	N/A	N/A	N/A	49.6
1180 36 01 128 064 RED/AMB	17.7	21.2	17.7	N/A	N/A	N/A	N/A	N/A	N/A	N/A	56.6
1180 36 01 144 064 RED/AMB	21.2	21.2	21.2	N/A	N/A	N/A	N/A	N/A	N/A	N/A	63.7
1180 36 01 160 064 RED/AMB	17.7	17.7	17.7	17.7	N/A	N/A	N/A	N/A	N/A	N/A	70.8
1180 36 01 176 064 RED/AMB	19.5	19.5	19.5	19.5	N/A	N/A	N/A	N/A	N/A	N/A	77.9
<b>80 Pixels High - Red/Amber</b>											
1180 36 01 016 080 RED/AMB	8.9	N/A	N/A	N/A	N/A	N/A	N/A	N/A	N/A	N/A	8.9
1180 36 01 032 080 RED/AMB	17.7	N/A	N/A	N/A	N/A	N/A	N/A	N/A	N/A	N/A	17.7
1180 36 01 048 080 RED/AMB	12.4	14.2	N/A	N/A	N/A	N/A	N/A	N/A	N/A	N/A	26.6
1180 36 01 064 080 RED/AMB	17.7	17.7	N/A	N/A	N/A	N/A	N/A	N/A	N/A	N/A	35.4
1180 36 01 080 080 RED/AMB	23.0	21.2	N/A	N/A	N/A	N/A	N/A	N/A	N/A	N/A	44.3
1180 36 01 096 080 RED/AMB	17.7	21.2	14.2	N/A	N/A	N/A	N/A	N/A	N/A	N/A	53.1
1180 36 01 112 080 RED/AMB	23.0	21.2	17.7	N/A	N/A	N/A	N/A	N/A	N/A	N/A	62.0

MODEL #	240-VAC					TOTAL
	CIRCUIT 1	CIRCUIT 2	CIRCUIT 3	CIRCUIT 4	CIRCUIT 5	
<b>16 Pixels High - RGB</b>						
1180 36 01 016 016 RGB	1.4	N/A	N/A	N/A	N/A	1.4
1180 36 01 032 016 RGB	2.8	N/A	N/A	N/A	N/A	2.8
1180 36 01 048 016 RGB	4.2	N/A	N/A	N/A	N/A	4.2
1180 36 01 064 016 RGB	5.5	N/A	N/A	N/A	N/A	5.5
1180 36 01 080 016 RGB	6.9	N/A	N/A	N/A	N/A	6.9
1180 36 01 096 016 RGB	8.3	N/A	N/A	N/A	N/A	8.3
1180 36 01 112 016 RGB	9.7	N/A	N/A	N/A	N/A	9.7
1180 36 01 128 016 RGB	11.1	N/A	N/A	N/A	N/A	11.1
1180 36 01 144 016 RGB	12.5	N/A	N/A	N/A	N/A	12.5
1180 36 01 160 016 RGB	13.9	N/A	N/A	N/A	N/A	13.9
1180 36 01 176 016 RGB	15.2	N/A	N/A	N/A	N/A	15.2
<b>32 Pixels High - RGB</b>						
1180 36 01 016 032 RGB	2.8	N/A	N/A	N/A	N/A	2.8
1180 36 01 032 032 RGB	5.5	N/A	N/A	N/A	N/A	5.5
1180 36 01 048 032 RGB	8.3	N/A	N/A	N/A	N/A	8.3
1180 36 01 064 032 RGB	11.1	N/A	N/A	N/A	N/A	11.1
1180 36 01 080 032 RGB	13.9	N/A	N/A	N/A	N/A	13.9
1180 36 01 096 032 RGB	16.6	N/A	N/A	N/A	N/A	16.6
1180 36 01 112 032 RGB	19.4	N/A	N/A	N/A	N/A	19.4
1180 36 01 128 032 RGB	22.2	N/A	N/A	N/A	N/A	22.2
1180 36 01 144 032 RGB	12.5	12.5	N/A	N/A	N/A	24.9
1180 36 01 160 032 RGB	13.9	13.9	N/A	N/A	N/A	27.7
1180 36 01 176 032 RGB	15.2	15.2	N/A	N/A	N/A	30.5
<b>48 Pixels High - RGB</b>						
1180 36 01 016 048 RGB	4.2	N/A	N/A	N/A	N/A	4.2
1180 36 01 032 048 RGB	8.3	N/A	N/A	N/A	N/A	8.3
1180 36 01 048 048 RGB	12.5	N/A	N/A	N/A	N/A	12.5
1180 36 01 064 048 RGB	16.6	N/A	N/A	N/A	N/A	16.6
1180 36 01 080 048 RGB	20.8	N/A	N/A	N/A	N/A	20.8
1180 36 01 096 048 RGB	9.7	15.2	N/A	N/A	N/A	24.9
1180 36 01 112 048 RGB	12.5	16.6	N/A	N/A	N/A	29.1
1180 36 01 128 048 RGB	15.2	18.0	N/A	N/A	N/A	33.2
1180 36 01 144 048 RGB	18.0	19.4	N/A	N/A	N/A	37.4
1180 36 01 160 048 RGB	20.8	20.8	N/A	N/A	N/A	41.6
1180 36 01 176 048 RGB	15.2	15.2	N/A	N/A	N/A	45.7
<b>64 Pixels High - RGB</b>						
1180 36 01 016 064 RGB	5.5	N/A	N/A	N/A	N/A	5.5
1180 36 01 032 064 RGB	11.1	N/A	N/A	N/A	N/A	11.1
1180 36 01 048 064 RGB	16.6	N/A	N/A	N/A	N/A	16.6
1180 36 01 064 064 RGB	22.2	N/A	N/A	N/A	N/A	22.2
1180 36 01 080 064 RGB	13.9	13.9	N/A	N/A	N/A	27.7
1180 36 01 096 064 RGB	16.6	16.6	N/A	N/A	N/A	33.2
1180 36 01 112 064 RGB	19.4	19.4	N/A	N/A	N/A	38.8
1180 36 01 128 064 RGB	22.2	22.2	N/A	N/A	N/A	44.3
1180 36 01 144 064 RGB	13.9	22.2	13.9	N/A	N/A	49.9
1180 36 01 160 064 RGB	16.6	22.2	16.6	N/A	N/A	55.4
1180 36 01 176 064 RGB	19.4	22.2	19.4	N/A	N/A	60.9
<b>80 Pixels High - RGB</b>						
1180 36 01 016 080 RGB	6.9	N/A	N/A	N/A	N/A	6.9
1180 36 01 032 080 RGB	13.9	N/A	N/A	N/A	N/A	13.9
1180 36 01 048 080 RGB	20.8	N/A	N/A	N/A	N/A	20.8
1180 36 01 064 080 RGB	12.5	15.2	N/A	N/A	N/A	27.7
1180 36 01 080 080 RGB	16.6	18.0	N/A	N/A	N/A	34.6
1180 36 01 096 080 RGB	20.8	20.8	N/A	N/A	N/A	41.6
1180 36 01 112 080 RGB	19.4	19.4	9.7	N/A	N/A	48.5
1180 36 01 128 080 RGB	22.2	22.2	11.1	N/A	N/A	55.4
1180 36 01 144 080 RGB	16.6	20.8	16.6	8.3	N/A	62.3
1180 36 01 160 080 RGB	19.4	20.8	19.4	9.7	N/A	69.3
1180 36 01 176 080 RGB	22.2	20.8	22.2	11.1	N/A	76.2

MODEL #	240-VAC					TOTAL
	CIRCUIT 1	CIRCUIT 2	CIRCUIT 3	CIRCUIT 4	CIRCUIT 5	
<b>16 Pixels High - Red Amber</b>						
1180 36 01 016 016 RED/AMB	0.9	N/A	N/A	N/A	N/A	0.9
1180 36 01 032 016 RED/AMB	1.8	N/A	N/A	N/A	N/A	1.8
1180 36 01 048 016 RED/AMB	2.7	N/A	N/A	N/A	N/A	2.7
1180 36 01 064 016 RED/AMB	3.5	N/A	N/A	N/A	N/A	3.5
1180 36 01 080 016 RED/AMB	4.4	N/A	N/A	N/A	N/A	4.4
1180 36 01 096 016 RED/AMB	5.3	N/A	N/A	N/A	N/A	5.3
1180 36 01 112 016 RED/AMB	6.2	N/A	N/A	N/A	N/A	6.2
1180 36 01 128 016 RED/AMB	7.1	N/A	N/A	N/A	N/A	7.1
1180 36 01 144 016 RED/AMB	8.0	N/A	N/A	N/A	N/A	8.0
1180 36 01 160 016 RED/AMB	8.9	N/A	N/A	N/A	N/A	8.9
1180 36 01 176 016 RED/AMB	9.7	N/A	N/A	N/A	N/A	9.7
<b>32 Pixels High - Red Amber</b>						
1180 36 01 016 032 RED/AMB	1.8	N/A	N/A	N/A	N/A	1.8
1180 36 01 032 032 RED/AMB	3.5	N/A	N/A	N/A	N/A	3.5
1180 36 01 048 032 RED/AMB	5.3	N/A	N/A	N/A	N/A	5.3
1180 36 01 064 032 RED/AMB	7.1	N/A	N/A	N/A	N/A	7.1
1180 36 01 080 032 RED/AMB	8.9	N/A	N/A	N/A	N/A	8.9
1180 36 01 096 032 RED/AMB	10.6	N/A	N/A	N/A	N/A	10.6
1180 36 01 112 032 RED/AMB	12.4	N/A	N/A	N/A	N/A	12.4
1180 36 01 128 032 RED/AMB	14.2	N/A	N/A	N/A	N/A	14.2
1180 36 01 144 032 RED/AMB	15.9	N/A	N/A	N/A	N/A	15.9
1180 36 01 160 032 RED/AMB	17.7	N/A	N/A	N/A	N/A	17.7
1180 36 01 176 032 RED/AMB	19.5	N/A	N/A	N/A	N/A	19.5
<b>48 Pixels High - Red Amber</b>						
1180 36 01 016 048 RED/AMB	2.7	N/A	N/A	N/A	N/A	2.7
1180 36 01 032 048 RED/AMB	5.3	N/A	N/A	N/A	N/A	5.3
1180 36 01 048 048 RED/AMB	8.0	N/A	N/A	N/A	N/A	8.0
1180 36 01 064 048 RED/AMB	10.6	N/A	N/A	N/A	N/A	10.6
1180 36 01 080 048 RED/AMB	13.3	N/A	N/A	N/A	N/A	13.3
1180 36 01 096 048 RED/AMB	15.9	N/A	N/A	N/A	N/A	15.9
1180 36 01 112 048 RED/AMB	18.6	N/A	N/A	N/A	N/A	18.6
1180 36 01 128 048 RED/AMB	21.2	N/A	N/A	N/A	N/A	21.2
1180 36 01 144 048 RED/AMB	23.9	N/A	N/A	N/A	N/A	23.9
1180 36 01 160 048 RED/AMB	13.3	13.3	N/A	N/A	N/A	26.6
1180 36 01 176 048 RED/AMB	15.0	14.2	N/A	N/A	N/A	29.2
<b>64 Pixels High - Red Amber</b>						
1180 36 01 016 064 RED/AMB	3.5	N/A	N/A	N/A	N/A	3.5
1180 36 01 032 064 RED/AMB	7.1	N/A	N/A	N/A	N/A	7.1
1180 36 01 048 064 RED/AMB	10.6	N/A	N/A	N/A	N/A	10.6
1180 36 01 064 064 RED/AMB	14.2	N/A	N/A	N/A	N/A	14.2
1180 36 01 080 064 RED/AMB	17.7	N/A	N/A	N/A	N/A	17.7
1180 36 01 096 064 RED/AMB	21.2	N/A	N/A	N/A	N/A	21.2
1180 36 01 112 064 RED/AMB	12.4	12.4	N/A	N/A	N/A	24.8
1180 36 01 128 064 RED/AMB	14.2	14.2	N/A	N/A	N/A	28.3
1180 36 01 144 064 RED/AMB	15.9	15.9	N/A	N/A	N/A	31.9
1180 36 01 160 064 RED/AMB	17.7	17.7	N/A	N/A	N/A	35.4
1180 36 01 176 064 RED/AMB	19.5	19.5	N/A	N/A	N/A	38.9
<b>80 Pixels High - Red Amber</b>						
1180 36 01 016 080 RED/AMB	4.4	N/A	N/A	N/A	N/A	4.4
1180 36 01 032 080 RED/AMB	8.9	N/A	N/A	N/A	N/A	8.9
1180 36 01 048 080 RED/AMB	13.3	N/A	N/A	N/A	N/A	13.3
1180 36 01 064 080 RED/AMB	17.7	N/A	N/A	N/A	N/A	17.7
1180 36 01 080 080 RED/AMB	22.1	N/A	N/A	N/A	N/A	22.1
1180 36 01 096 080 RED/AMB	11.5	15.0	N/A	N/A	N/A	26.6
1180 36 01 112 080 RED/AMB	14.2	16.8	N/A	N/A	N/A	31.0
1180 36 01 128 080 RED/AMB	16.8	18.6	N/A	N/A	N/A	35.4
1180 36 01 144 080 RED/AMB	19.5	20.4	N/A	N/A	N/A	39.8
1180 36 01 160 080 RED/AMB	22.1	22.1	N/A	N/A	N/A	44.3
1180 36 01 176 080 RED/AMB	19.5	19.5	9.7	N/A	N/A	48.7

NOTE: MONOCHROME MODEL NUMBERS WILL CONTAIN EITHER RED OR AMB (NOT BOTH)

DIMENSIONS ARE INCH AND TOLERANCES ARE AS FOLLOWS UNLESS OTHERWISE SPECIFIED			
X XX XXX ANGLES	±0.1 ±0.02 ±0.005 ±1°	7840 North 86th Street Milwaukee, WI 53224 USA	
DRAWN BY	DATE	TITLE	
SSL	1/22/04	ALPHA ECLIPSE 3600 MECHANICAL DETAILS	
CHECKED BY	DATE	SIZE	DOCUMENT NO.
		C	11800000-07
APPROVED BY	DATE	SCALE:	STATUS:
		Released	5 of 5

