

PRIORITY:	High
DATE:	March 9, 2007
TITLE:	AlphaEclipse Signs and Daylight Saving Time
ECO REFERENCE:	N/A
PRODUCT(S) AFFECTED:	AlphaEclipse Excite, RoadStar, StreetSmart, and Classic signs
SUMMARY:	The United States has changed the dates for Daylight Saving Time. These instructions explain how to set the sign's time using AlphaNet or Ooh!Media.

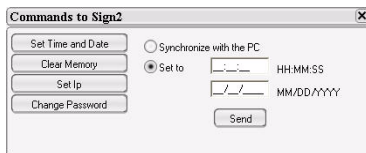
Follow these instructions after 2AM Sunday, March 11th and after you know that your computer has the correct time.

To set the time on AlphaEclipse StreetSmart, RoadStar, and Classic signs using AlphaNet:

Because the time on the computer is transmitted to these signs with each message transmission, you just need to retransmit your messages to these signs.

To set the time on Excite signs using Ooh!Media v1.1:

1. In Ooh!Media, go to the **Scheduler**.
2. Click the **Sign** tab at the bottom of the Ooh!Media window.
3. Select the sign you want to update.
4. Click the **Commands** button.
5. Click the **Set Time and Date** button, select **Synchronize with the PC**, and then click **Send**.



To set the time on Excite signs using Ooh!Media v1.0:

1. From the View menu, select Sign commands.
2. Undock the window and make it larger so you can see the Send button.
3. Click the **Send** button.