

BETAbrite®

Window Display Series

Installation & Operation Manual

English Version

April 10, 2013



(This page is intentionally left blank)

© Copyright 2012 Adaptive Micro Systems LLC. All rights reserved.

Adaptive Micro Systems
7840 North 86th Street
Milwaukee, WI 53224 USA
414-357-2020
414-357-2029 (fax)
<http://www.adaptivedisplays.com>

Adaptive and BETAbrite are registered trademarks of Adaptive Micro Systems LLC. All other brand and product names are trademarks or registered trademarks of their respective companies.

Contents

Section 1: Introduction	1
Technical Specifications	1
EMI Information	2
Safety and EMC Compliance	2
Package Contents.....	2
Section 2: Installation Instructions	4
Before you begin.....	4
Mounting Instructions	4
Wall Mounting	4
Ceiling Mounting.....	4
Section 3: Applying power to the sign	6
Connect the power cable to the sign.....	6
Section 4: Operating the BETAbrite sign.....	7
Personal Computer (PC).....	7
Section 5: Networking your Sign.....	10
Section 6: Warranty Information.....	14
Warranty	14

Section 1: Introduction

Technical Specifications

Model Number	Matrix	Color	Height inches (cm)	Length inches (cm)	Depth inches (cm)	Weight pounds (kg)	Environmental Requirements
WD10RGB016X096	16x96	RGB	9 (23)	41 (104)	3.5 (9)	20 (9)	Operating Temperature: -20C to +50C Humidity Range: 0-95% Non-condensing Indoor use only
WD10RGB016X128	16x128	RGB	9 (23)	53.5 (136)	3.5 (9)	26 (12)	
WD10RGB032X096	32x96	RGB	15.25 (39)	41 (104)	3.5 (9)	35 (16)	
WD10RGB032X128	32x128	RGB	15.25 (39)	53.5 (136)	3.5 (9)	51 (23)	
WD10RGB048X096	48x96	RGB	21.75 (55)	41 (104)	3.5 (9)	53 (24)	
WD10RGB048X128	48x128	RGB	21.75 (55)	52.75 (134)	3.5 (9)	57 (26)	
WD10RED016X096	16x96	Mono Red	9 (23)	40.25 (102)	3.5 (9)	20 (9)	
WD10RED016X128	16x128	Mono Red	9 (23)	52.75 (134)	3.5 (9)	26 (12)	
WD10RED032X096	32x96	Mono Red	15.25 (39)	40.25 (102)	3.5 (9)	35 (16)	
WD10RED032X128	32x128	Mono Red	15.25 (39)	52.75 (134)	3.5 (9)	53 (24)	
WD10RED048X096	48x96	Mono Red	21.75 (55)	40.25 (102)	3.5 (9)	53 (24)	
WD10RED048X128	48x128	Mono Red	21.75 (55)	52.75 (134)	3.5 (9)	62 (28)	

EMI Information

United States

This device complies with Part 15 of the FCC rules. Operation is subject to the following two conditions: (1) this device may not cause harmful interference (2) this device must accept any interference received, including interference that may cause undesired operation.

Canada

This Class A digital apparatus meets all requirements of the Canadian Interference-Causing Equipment Regulations.

Cet appareil numerique de la class A respecte toutes les exigences du Regement sur le material broullieur du Canada.

Safety and EMC Compliance

North America

- FCC Part 15, Class A
- UL-CUL listed to UL 48

Package Contents

A



B



C



D



E



Part	Quantity	Description
A	1	BETAbrite sign
B	1	BETAbrite XL Window Display Messaging CD
C	2	M8 stainless steel eyebolt
D	1	Ethernet cross-over cable
E	1	Line cord - 3 pole US configuration, 90 degree receptacle (sign end)

Section 2: Installation Instructions

Before you begin

- These displays are for indoor use only and should not be exposed to a wet environment.
- Before installing a display, disconnect power to the display. Contact with high voltage may cause death or serious injury. Always disconnect power to sign prior to servicing.
- Use only the supplied power cord. Use of any type of non-standard BETAbrite window display power cord may damage the sign and void warranty.
- Use of a surge protector between the electrical outlet and the sign is highly recommended. Message data can be lost or the sign could be damaged by an electrical surge.
- Do not mount the BETAbrite window display in any way that blocks the vents on the back of the sign.
- Mounting hardware that is used to hang or suspend a sign must be capable of supporting at least 4 times the weight of the sign.

Mounting Instructions

There are two ways of mounting:

1. Wall mounting
2. Ceiling mounting

NOTE: Only eyebolts for ceiling mounting are provided by Adaptive.

Wall Mounting

An optional wall mounting kit is available. Please contact Adaptive to obtain one.
(P/N 1750210101)

Ceiling Mounting

1. Install the 2-M8 eyebolts on the top of the display.
2. Use a chain (not supplied) to hang the display from a ceiling.



Figure 1: Sign with M8 eyebolts installed in top of sign

NOTES:

1. Choose a chain and mounting system capable of supporting at least 4 times the weight of the sign.
2. Keep a minimum of 2.56 in (65 mm) clearance on the back of the display for power/data input and vents.
3. Clearance between the face of the sign and a window must be a minimum of 2" for proper ventilation.

Section 3: Applying power to the sign

Connect the power cable to the sign

Plug the female end of the power cable into the lower left back of the sign and then the male end into the wall outlet.

NOTE: The wall outlet must be near the equipment and must be easily accessible.



Figure 2: Typical layout of labels and connectors (as viewed from back of sign).

Section 4: Operating the BETAbrite sign

Personal Computer (PC)

Personal computers can use the BETAbrite XL Messaging Software to create and send messages to the sign. The BETAbrite XL Messaging Software is compatible with the following Windows operating systems:

- Windows 8
- Windows 7

Options for a PC to communicate with the BETAbrite sign

Please see Section 5 for additional networking details.

1. Connect PC directly to sign using cross over Ethernet cable.
2. Connect PC to sign wirelessly through your existing network using a Wi-Fi device.
3. Connect PC to sign hardwired through your existing network using a standard Ethernet cable (not supplied).

Communication using a cross over Ethernet cable

1. Plug 1 end of the cross over Ethernet cable into either:
 - a. the Ethernet port on the desired computer.OR
 - b. the Ethernet port on a Local Area Network (LAN) hub. It may be necessary to use a standard Ethernet network cable if the LAN hub/switch you are using does not auto sense the type of cable being used.
2. Plug the other end of the cross over Ethernet cable or standard Ethernet cable into the Ethernet port on the back of the BETAbrite sign.
3. Use the BETAbrite XL Messaging Software to program messages into the sign.

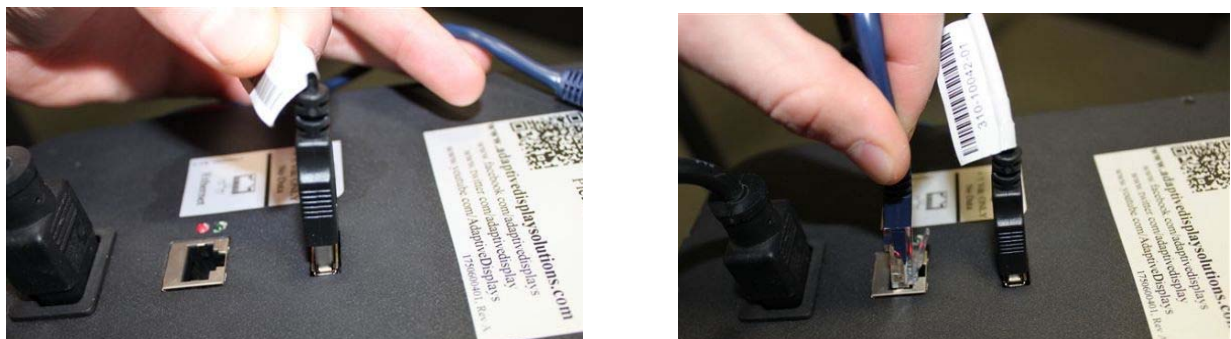
Communication using Wi-Fi device

1. Configure the wireless device according to the directions accompanying the device.
2. If your Wi-Fi device is powered by a USB connection, take the ends of the USB and Ethernet cables from the Wi-Fi device.
3. Locate the USB and Ethernet ports on the back of the sign.
4. If your Wi-Fi Device is powered by an AC adapter than a second wall outlet will be required to power this device.

NOTE: USB Connection is 5Vdc power ONLY! No data.



5. Plug the ends of the USB and Ethernet cables into their respective ports on the back of the sign.



6. Use the BETAbrite XL Messaging Software to program messages into the sign.

Installing the BETAbrite XL Messaging Software

1. Insert the BETAbrite XL Messaging Software CD into CD-ROM drive.
2. Follow the installation wizard instructions on the screen.

NOTE: The programming user manual is accessible from the BETAbrite XL Messaging software by pressing the F1 key once the software is launched.

- If you have problems viewing the Messaging Software User Manual, it may be due to your default browser. Adaptive recommends using Internet Explorer.
- You can also access the Messaging Software User Manual from your PC desktop via the following selections:

Select Start button ⇒ All Programs ⇒ Adaptive Micro Systems ⇒ Betabrite XL Messaging Software ⇒ Help Manual

Section 5: Networking your Sign



So, you have your new sign and want to start using it. Well the first thing you need to do is get it set up on your Network.

There are two ways to do this:

1. WIRELESS CONNECTION

If you have a wireless network in your building, you can connect a WiFi device configured to recognize the local network, to the sign's Ethernet port. This will allow you to seamlessly maintain all your network connections and communicate to the sign at the same time.

2. HARDWIRED CONNECTION

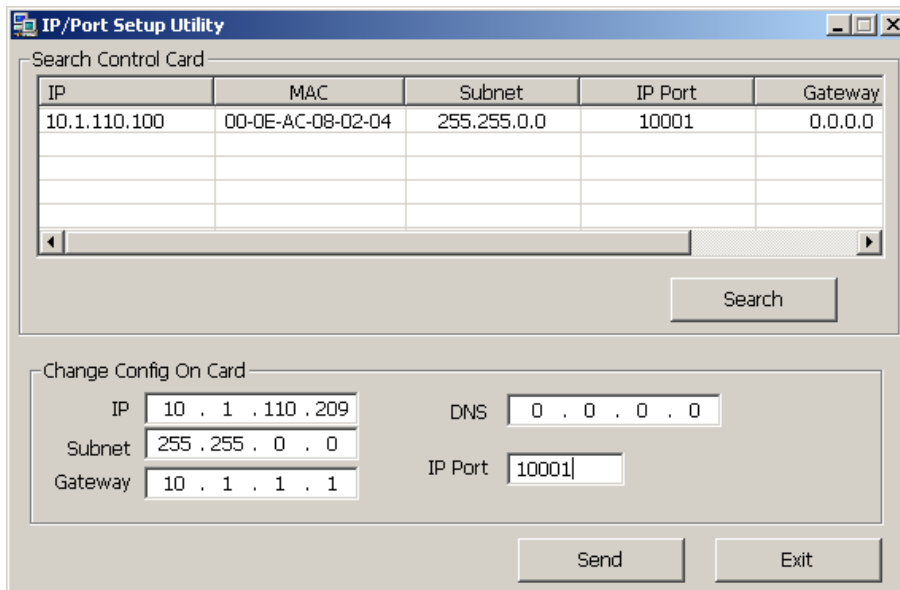
You can connect a physical Ethernet Cross Over cable between the BetaBrite Window Display and your computer. This will allow you to communicate to the sign. The cable only needs to be connected when messages are being sent. Adaptive supplies a 20-foot cable with the sign for such a purpose. Or, you can use a standard Ethernet cable to connect to a switch or hub.

Or, you can refer to the BetaBrite Window Display sign manual to start using the IR remote

WIRELESS CONNECTION

1. Configure Sign

- 1.1. For your computer to communicate to the sign over your wireless network, it must have a network address compatible with your Local Area Network. Have your Network Administrator determine what network settings to set the sign to.
- 1.2. The default network settings on the BetaBrite Window Display are 10.11.11.254 so your computer will need to be compatible with that configuration. Set the LOCAL AREA CONNECTION on your computer to 10.11.11.**250**
- 1.3. Connect the cross over cable provided with your BetaBrite Window display between the sign and the Local Area Connection on your computer (the Ethernet port)
- 1.4. Open the NetControl software provided on the CD
- 1.5. Click SEARCH
- 1.6. The software will find the sign and load the sign's current network settings.
- 1.7. Enter the appropriate network info that you want the sign set to.



- 1.8. Verify port is set to 10001
- 1.9. Click send
- 1.10. Manually reboot sign by disconnecting and reconnecting and verify the network address has changed.

2. Configure WiFi.

- 2.1. Please refer to the Manufactures manual to configure and connect your WiFi device. Typically, you will need to connect the WiFi device to your computer for set up.

3. Connect WiFi to sign.

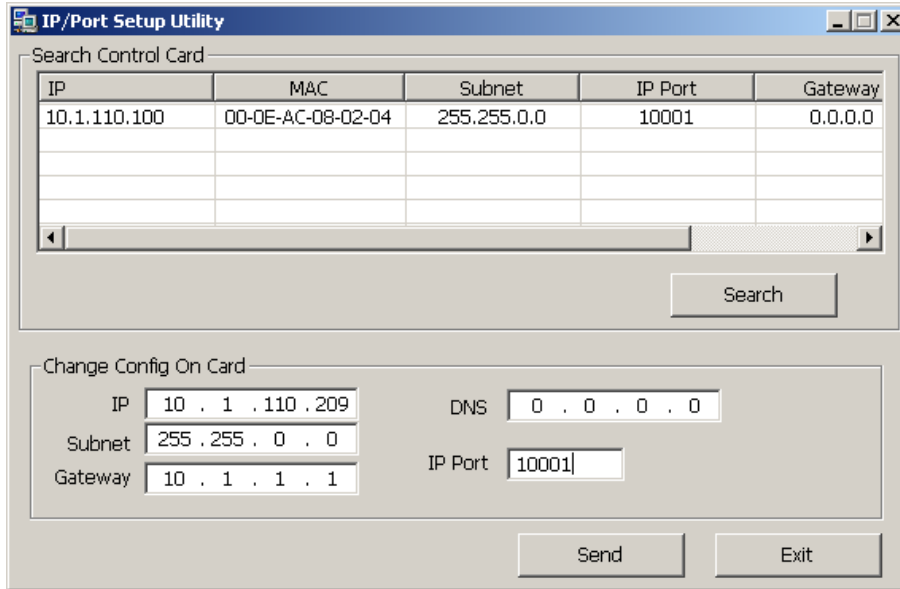
- 3.1. Disconnect WiFi unit from your computer
- 3.2. Connect to the BetaBrite Window Display using the Ethernet cable and USB cable provided in the WiFi kit. If no USB cable is provided for power, connect power to your WiFi device per your WiFi user manual.
- 3.3. When connected to the sign, verify all LED indicators are correct per WiFi users manual.

4. Set up computer.

- 4.1. Reconnect any network cables that were disconnected and re-enable any wireless cards – all should be set to DHCP to the network.
- 4.2. You are now ready to send messages.

HARD WIRED CONNECTION**1. Configure sign**

- 1.1. For your computer to communicate to the sign over your wireless network, it must have a network address compatible with your Local Area Network. Get an IP from your Network Administrator to set the sign to.
- 1.2. Set LOCAL AREA CONNECTION on your computer to 10.11.11.250
- 1.3. Connect the cross over cable provided with your sign between the sign and Local Area Connection on your computer (the Ethernet port)
- 1.4. Open the NetControl software provided on the CD
- 1.5. Click SEARCH
- 1.6. The software will find the sign and load configuration.
- 1.7. Enter the appropriate network info for the configuration the sign should be set to.



1.8. Verify port is set to 10001

1.9. Click send

1.10. Manually reboot sign disconnecting and reconnecting and verify the network address has changed.

2. Connect sign to network

2.1. Now that your sign has a network address compatible with your Local Area Network, you can connect it to your network.

2.1.1. Use a network hub or switch.

2.1.1.1. Connect a network cable (not the cross over cable supplied by Adaptive) to the Ethernet port on the back of the sign.

2.1.1.2. Connect the other end to a network drop.

2.1.2. Use cross-over cable.

2.1.2.1. Connect a network cable to the Ethernet port on the back of the sign.

2.1.2.2. Connect the opposite end to a network card (network port) on your PC.

3. Set up computer.

3.1. Reconnect any hardwired Local Area Connection cables and re-enable any wireless cards – all should be set to DHCP to network.

3.2. You are now ready to send messages.

Section 6: Warranty Information

Warranty

Adaptive Micro Systems LLC warrants to the original purchaser that the sign and keyboard will be free of defects in workmanship and materials for a period of one year from the date of purchase.

Adaptive Micro Systems LLC will without charge, repair or replace, at its option, defective product or component parts upon delivery to the factory service department accompanied by proof of the date of purchase in the form of a sales receipt.

This warranty does not apply in the event of any misuse or abuse of the product, or as a result of any unauthorized repairs or alterations. This warranty does not apply if the serial number is altered, defaced or removed from the sign.

The purchase price of this product does not include, from Adaptive Micro Systems LLC, any on-site support, service or maintenance.

Local ordinances prohibiting the use of flashing signs may exist in some locations. Compliance with local ordinances is the sole responsibility of the customer.

A Return Merchandise Authorization (RMA) number is required to obtain warranty service. To obtain an RMA number, do the following:

1. Contact Adaptive Micro Systems' Customer Service at 414-357-2020.
2. Ask a Customer Account Specialist for an RMA number.