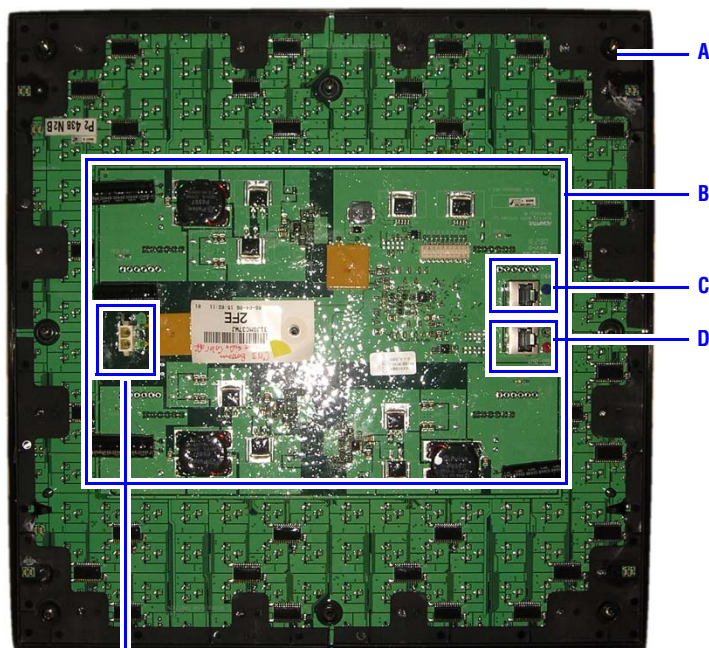


Replacing a Driver Assembly

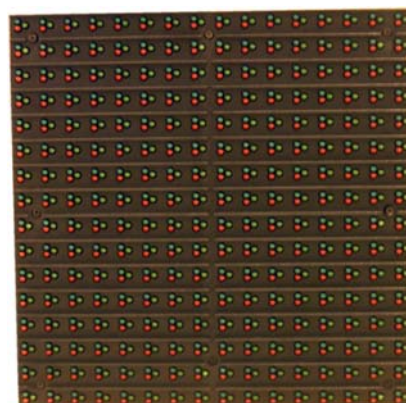
(PNs 1109210004, 1112230004, 1191500801TB, 1199500801TB, 1199500802TB, 1199530801SP, 1199500802SP, 1199530801TB)

Driver assemblies are used in Excite signs to display data. There are two (for 35mm signs), three, or four driver assemblies inside each door, depending on the case size. Driver assemblies for 35mm signs have an 8x16 pixel area and the driver assemblies for 20mm and 23mm Series A and B signs have a 16x16 pixel area.

23mm Driver Assembly (20mm is similar)



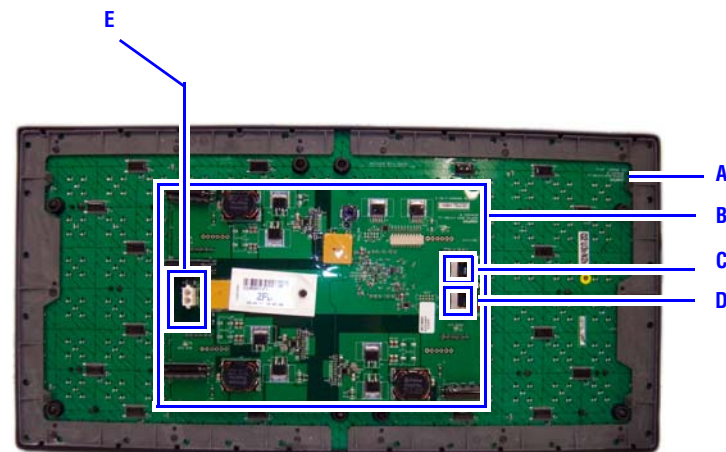
Inside view of a 16x16 driver assembly.



External view of a 16x16 driver Excite assembly used for 20mm and 23mm signs.



External view of an 8x16 driver assembly used for 35mm Excite signs.



35mm Driver Assembly

Figure 1: Internal and external views of Excite 23mm and 35mm driver assemblies.

Item	Name	Description
A	DRIVER BOARD	The driver board contains the LEDs on the outside and the power interface board on the inside.
B	POWER INTERFACE BOARD	Provides the driver board with power and data.
C	TURBO IN	<ul style="list-style-type: none"> In cases along the bottom row, receives input from the turbo distributor board. In all cases above the bottom row, receives input from the driver board in the row below it.
D	TURBO OUT	When used, sends data to the driver board in the row above it.
E	DC POWER	Power input from the cases's power supply.

Before you begin

Tools needed

- 5/32-inch hex tool (pn 68117076)
- Screwdriver

Replacing the driver assembly

WARNING! Hazardous voltage. Contact with high voltage may cause death or serious injury. Always disconnect power to unit prior to servicing.

Notice: Observe appropriate precautions to prevent electrostatic discharge (ESD) or "static" damage to the replacement part. For safe handling of ESD-sensitive parts, see TechMemo #00-0005.

⇒ To replace a driver assembly

1. Disconnect all power to the sign at the power source.

Notice: If the situation requires you to hot swap the driver assembly, perform these steps precisely or damage to sign components may occur.

2. Remove the driver assembly screws.

Notice: Do not use a drill or power driver to remove the Phillips screws or you will damage the driver assembly

- Use a #2 Phillips screwdriver to remove all 7 screws.
- Use a 5/32-inch hex tool to remove the top middle screw.
- Gently pull the driver assembly out 1-2 inches.

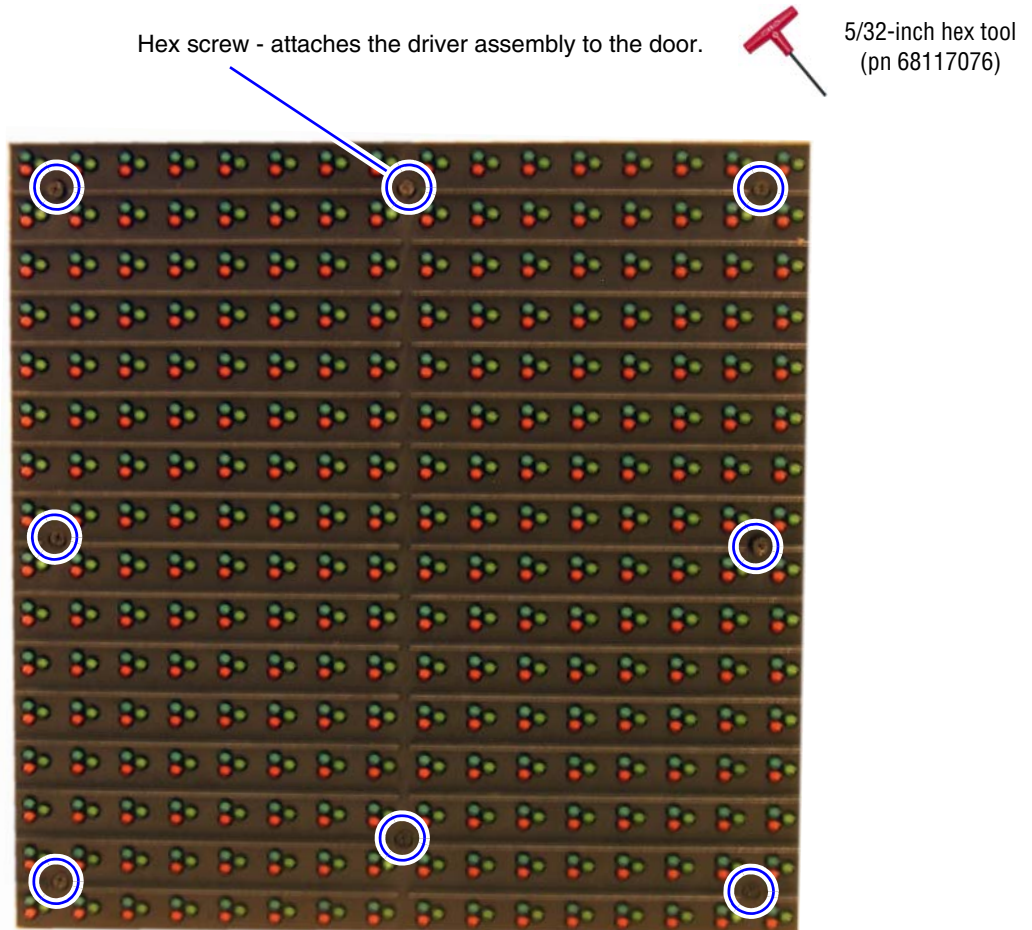


Figure 2: Screw locations on the driver assembly.

3. Disconnect the cables from the power interface board.

Notice: Disconnect the cables in the order shown or damage to sign components may result.

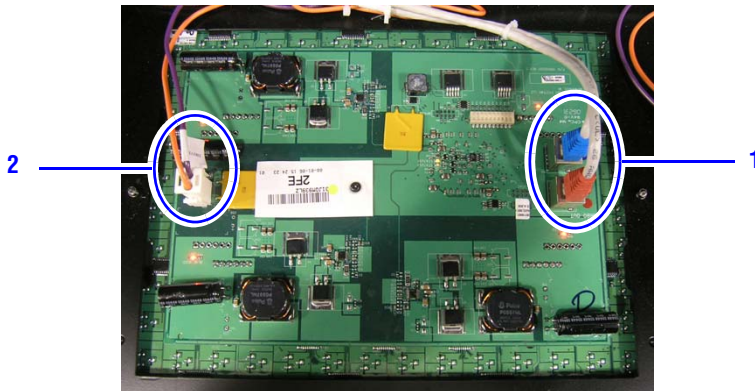


Figure 3: Cable disconnection sequence on the driver assembly.

4. Remove the driver assembly and gently slide in the new driver assembly:
 - Make sure the new driver assembly has the same orientation as the original one (refer to step 3).
 - Leave enough room to connect the cables in the next step.
5. Connect the cables to the power interface board.

Notice: Connect the cables in the order shown or damage to sign components may result.

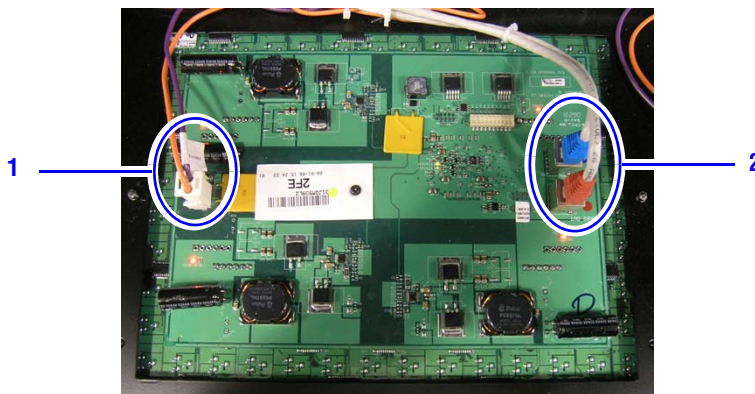


Figure 4: Driver assembly cable connection sequence.

6. Push in the driver assembly until it is fully seated.
7. Insert and tighten the hex screw (top center) and the 7 Phillips screws.

Notice: Do not use a drill or power driver to install the Phillips screws or you will damage the driver assembly.

- Refer to step 2 for locations.
 - Torque specification: 15 in-lbs.
8. Apply power to the sign.