

Key Features

- Easy-to-use message management tools for: monitoring data, linking to data sources, setting monitored parameters to enact change to message attributes
- Full suite of flexible administration tools, all accessible remotely

Data Sources

- OPC Gateway
- ODBC Gateway*
- Client messaging (manual text entry)
- SeQent PlantCall (optional)

Benefits

- Fast Return On Investment (ROI)
- Visually displayed operations
- Reduced costs
- Improved quality
- Increased productivity
- Lower inventories
- Employee motivation

Seamlessly harnessing the power of data, visually displayed, to drive productivity.

In today's highly competitive manufacturing environment, companies that will thrive are those that implement some form of continuous improvement program. Visual Workplace solutions have played a key role in improved productivity and cost savings by displaying Key Performance Indicators (KPIs).

Plant floor communications – critical data automatically displayed.

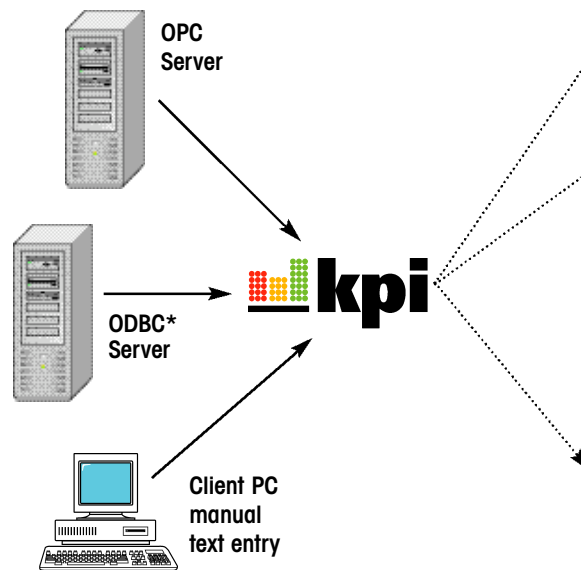
Harvest real-time KPI data points from your OPC or ODBC* servers easily with this turn-key, software solution. KPIworks™ software from Adaptive, allows you to connect to various inputs: database fields, relays, photo cells, status values, process sensors... Monitored Key Performance Indicators combined with your custom-set parameters will optimally format and visually display the desired information – automatically. Benefits can include: trends being caught and corrected, reduced time between line changes, proactive front office action, maintained parts inventories, and swift response to line errors or equipment bottlenecks to maximize uptime.

Easy to install and configure, KPIworks gets your real-time production data to Adaptive Andon boards, marquees and other plant floor displays

in a fraction of the time of other integration options. This translates into production efficiencies. And, with no custom code to maintain, this scalable software is economical, easy to install and configure, and fast to learn.

Tested, proven, robust and well supported.

KPIworks has been proven in some of the largest and most complex manufacturing facilities. It can provide broad stroke information or can be configured to provide more detailed production statistics. But its real strength is its ease of use and flexibility. Robust and well supported, KPIworks can help you achieve your Continuous Improvement goals by making a Visual Workplace solution an easy and economical step into the future.



Line	Part#	Total	Rejects%	Setup
000-	AL-2046	1289	12%	4:08
00-	AL-2046	989	8%	4:08
00-	AL-2046	2466	4%	4:08

Alpha 9240 Showing line status motivates employees, quickly drawing attention to quality issues.

PLAN. 47	MANAGEMENT BOARD								PROD. 48
	BUFFERS								
FLOW RATE	1	2	3	4	5	6	7	8	
2CPM	1	2	3	4	5	6	7	8	
STATUS	1	2	3	4	5	6	7	8	
RUN RATIO	91	92	92	92	92	98	99		
PRODUCED	44	45	45	45	46	48	48		
--CELL 4 PARTS STV--									
120 DAYS WITHOUT ACCIDENT									

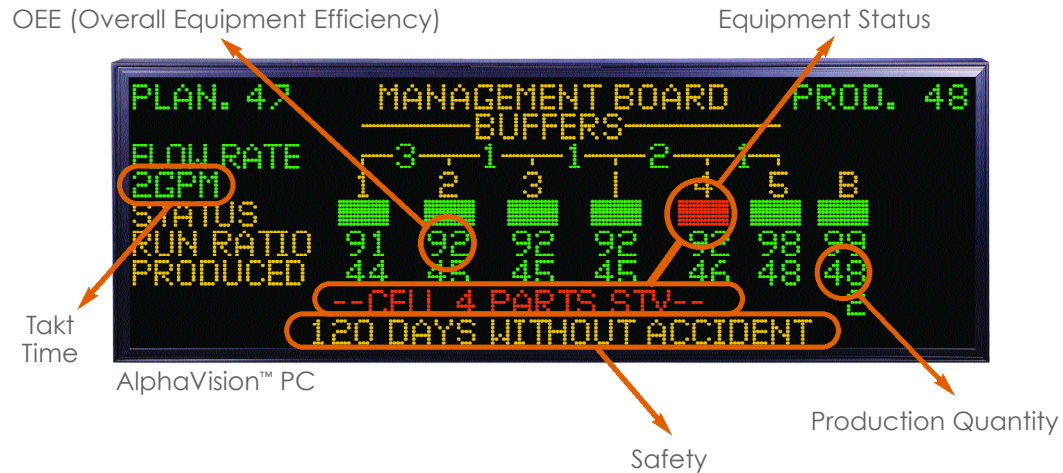
AlphaVision PC Showing cell status in different colors allow floor personnel to react quickly to starved cells, machine faults or alarms.



AlphaVision PC Showing trends in graph form allows the floor to anticipate what is going to happen.

* to come later this year

What type of production data can be displayed?



System Requirements

KPIworks Server

One of:	Microsoft Win2K (SP4+) Microsoft Win2K3 Microsoft WinXP (SP1a+)
Display:	800x600
Disk Space:	200MB
RAM:	128MB
Drivers:	TCP/IP MDAC V2.7SP1
One or more of:	Adaptive Display

KPIworks Client

One of:	Microsoft Win2K (SP4+) Microsoft Win2K3 Microsoft WinXP (SP1+)
Applications:	none
Display:	800x600
Disk Space:	32MB
RAM:	32MB
Drivers:	TCP/IP

KPIworks Gateway for OPC

One of:	Microsoft Win2K (SP4+) Microsoft Win2K3 Microsoft WinXP (SP1a+)
Applications:	OPC Database Server(s)
Display:	800x600
Disk Space:	64MB
RAM:	32MB
Drivers:	TCP/IP MDAC V2.7SP1 OPC Core Components v2.00
One or more of:	Adaptive Display

KPIworks Gateway for ODBC*

One of:	Microsoft Win2K (SP4+) Microsoft Win2K3 Microsoft WinXP (SP1a+)
Applications:	ODBC* Database Server(s)
Display:	800x600
Disk Space:	64MB
RAM:	64MB
Drivers:	TCP/IP MDAC V2.7SP1 ODBC* Drivers
One or more of:	Adaptive Display

* to come later this year