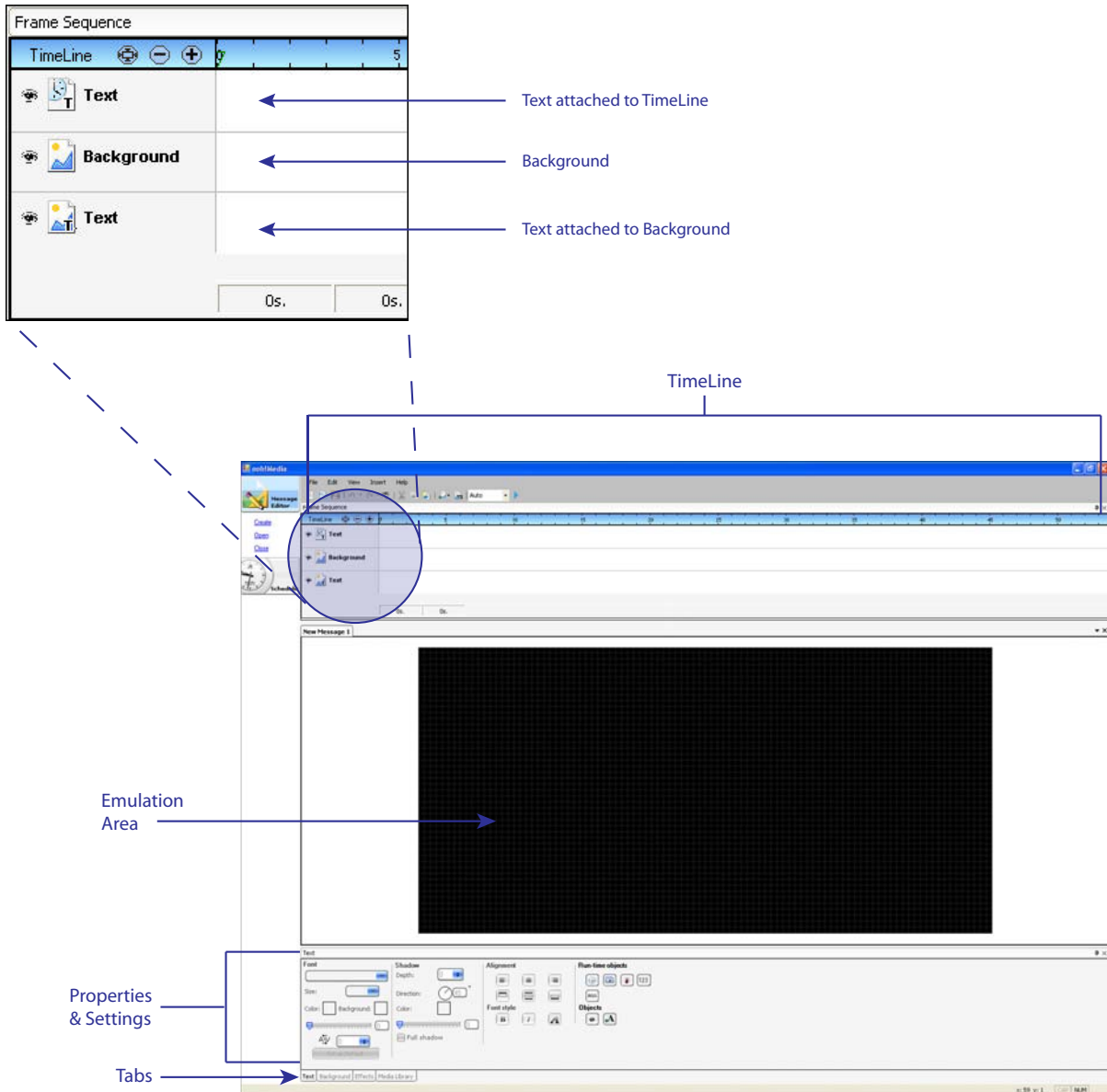


Overview

ooh!Media is an application used to create messages for your sign. In ooh!Media you can create basic text messages, messages with animations or graphics, and messages with both text and graphics or animations.



This Quick Start is intended to help you quickly learn how to create and customize messages. We use a 48x96 size sign for the examples, but you can use your sign to follow the instructions.

This Quick Start was designed to be used with a full color RGB sign. If your sign doesn't support full color, use colors that are appropriate for your sign such as red or amber.

Setting up your workspace

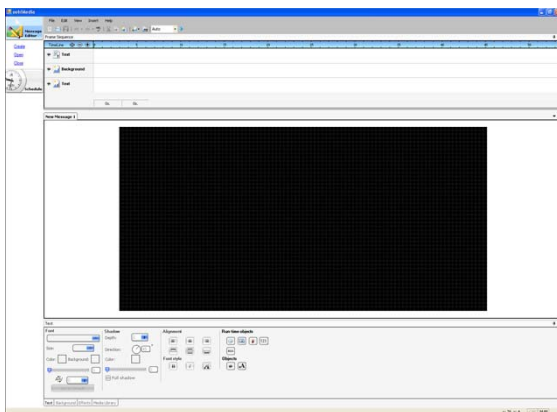
You can customize ooh!Media to your personal taste by setting which items you want to appear in the ooh!Media window. For the purpose of this Quick Start we will use the Expert Layout because it makes everything we need available on the screen and is fairly easy to use.

To set ooh!Media to Expert Layout:

1. Open ooh!Media.
Select the **Start** button, **All Programs**, **ooh!Media**, and then choose **ooh!Media**.
2. From the **View** pull-down menu, select **Expert Layout**.



Your ooh!Media window should look similar to the following:



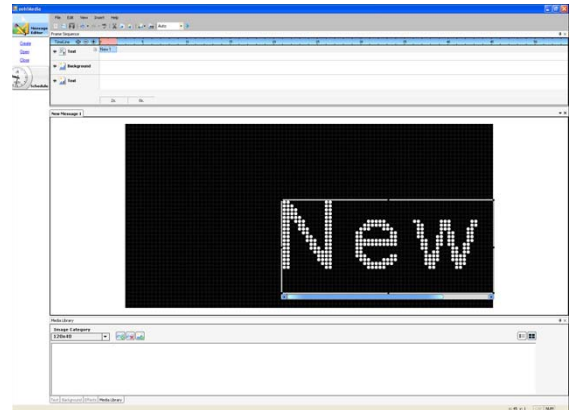
Creating text messages

For our first message we will create a message for the new year. Our goal is to create a message with the text, "Happy New Year" that scrolls across the sign.

To create a basic text message:

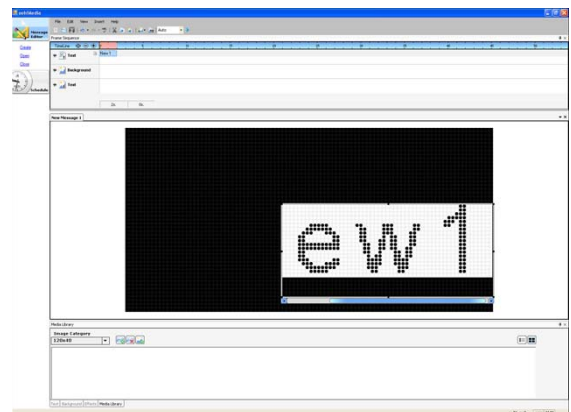
When you first open ooh!Media, it starts a new empty message for you.

1. Click in the Emulation Area to create a new text box.

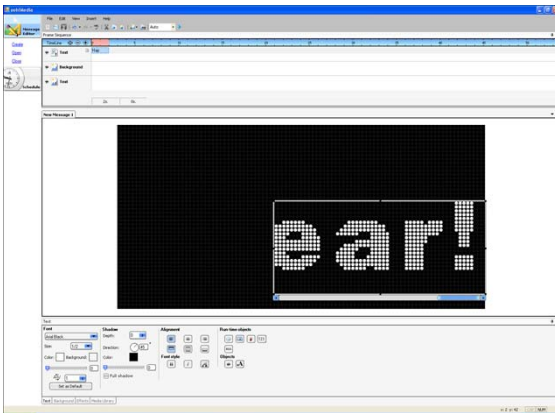


2. Select all of the text inside the text box.

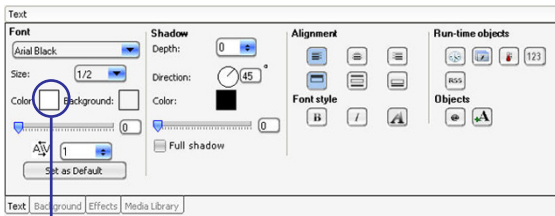
Tip: To select all the text in the message, click inside the text box and simultaneously press the **CTRL+A** keys.



- On the Text tab under Font, select **Arial Black** and then type the following text:
Happy New Year!

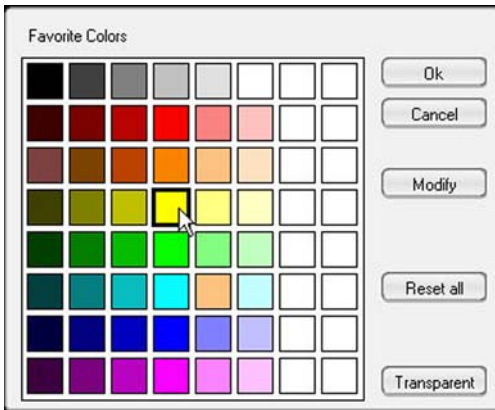


- Select all the text in the text box and then click the color swatch on the Text tab.



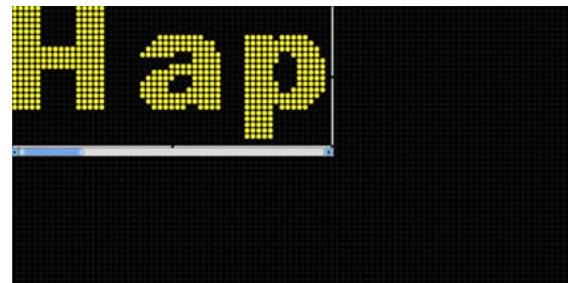
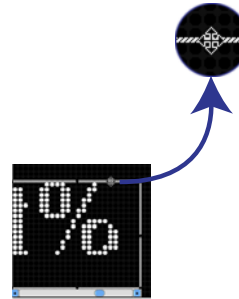
Color Swatch

The color dialog opens.



- Click the yellow swatch and click **OK**.

- Move the text box to the upper left corner. Hover your cursor over the text box border in the Emulation Area until four arrows appear and then click and drag it to where you want.



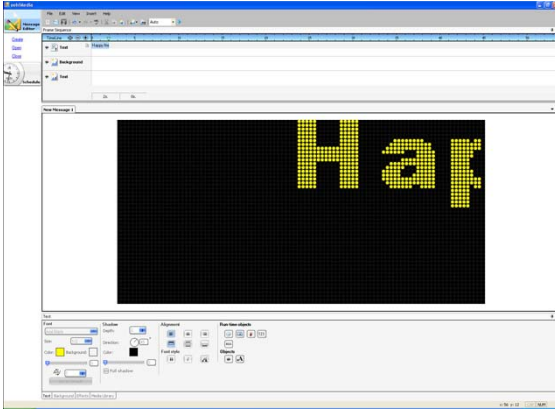
- Size the text box so it takes up the whole Emulation Area.

Hover your cursor over one of the text box borders until it changes to two arrows and then click and drag to stretch the box.



- Save the message.
 - Click the disk button or select **Save** from the File pull-down menu and name the file **Happy New Year**.
- Preview the message.
 - Click the preview button in the toolbar at the top of the window.

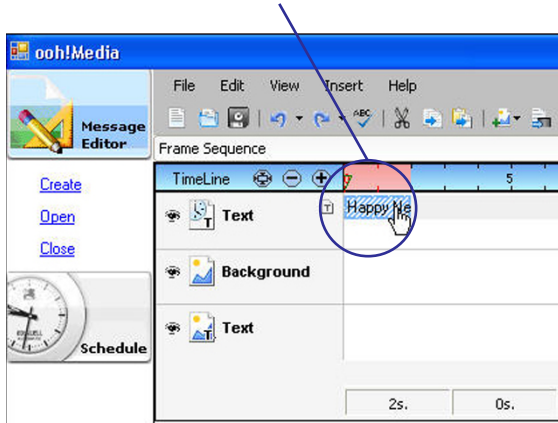
Our message looks like this:



To select a message:

When messages are not visible in the Emulation Area, you can select them in the TimeLine.

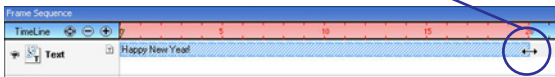
If you don't see the text box in the Emulation Area, select the text box in the TimeLine to make it reappear.



To extend the message length:

1. In the TimeLine, hover your cursor along the right edge of the message until two arrows appear.
2. Click and drag the box to 20 seconds.

Stretch the text message



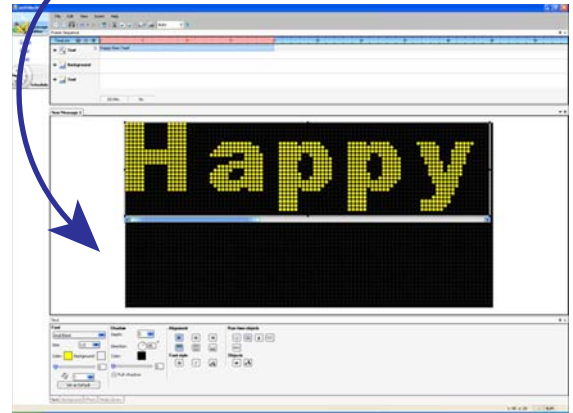
3. Save your message and preview it again.

Adding time and temperature to messages

To add time to the message:

1. Make sure nothing is selected in the Emulation Area.

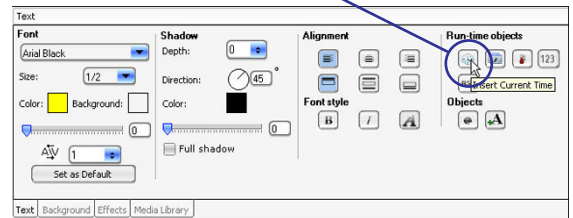
Click in the white space to make sure nothing is selected.



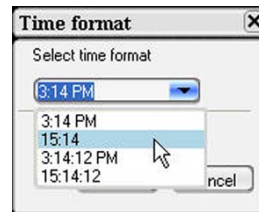
2. Click the clock button.

The Time Format dialog opens.

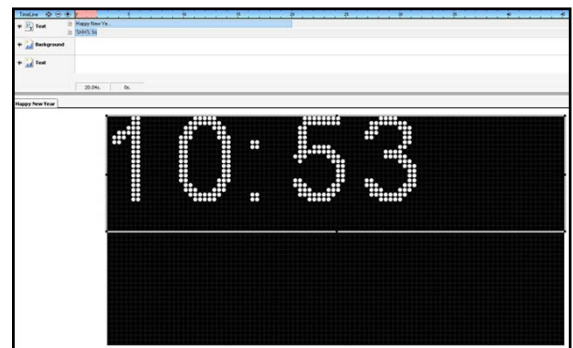
Clock button



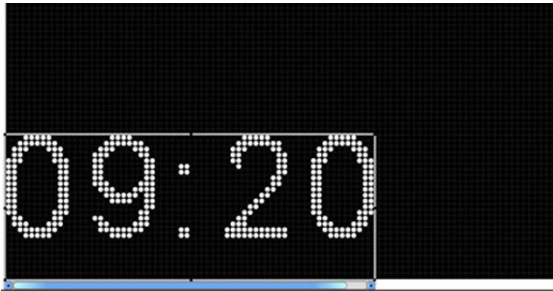
3. In Time Format dialog, select the option showing hours and minutes and click **OK**.



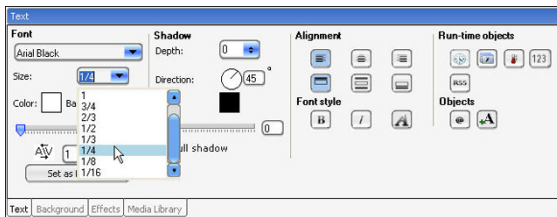
A time box is added to the TimeLine and the Emulation Area:



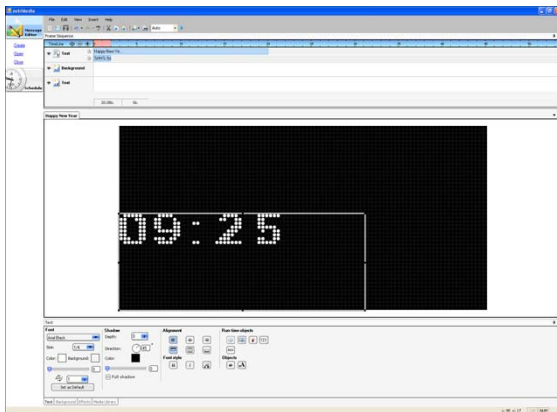
- In the TimeLine, extend the length of the time message so it is the same length as the Happy New Year message.
- Move the time message box to the lower left corner and make it smaller.



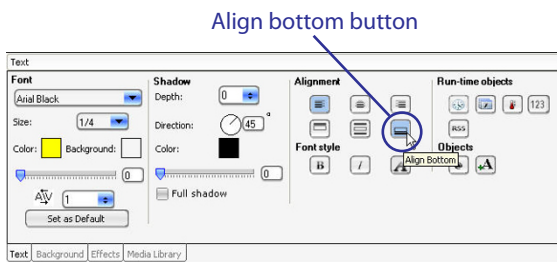
- Select all the text in the time message box.
- On the Text tab under Font, select **Arial Black** and select **1/4** from the Size list.



Note: The options in the Size list represent proportions of the sign height. For example, 1 is the full height of the sign and 1/2 is half the sign height.



- Click the **Color** swatch, select **Yellow** in the Color dialog and click **OK**.
- On the Text tab under Alignment, select the align-bottom button.



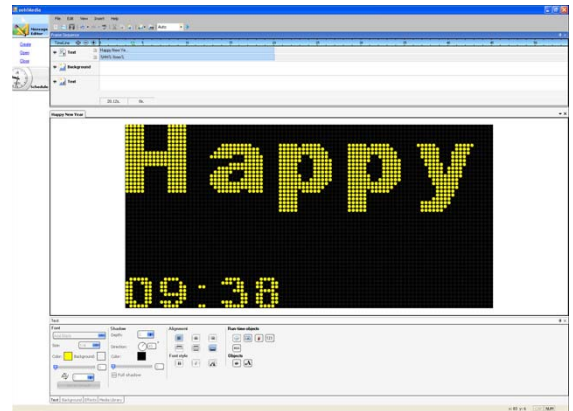
- Size the time message as necessary.

Tip: When adjusting the size of the temperature and time messages, make sure you leave enough room for all characters to appear. For example, if it's 1:00 PM now, make sure you leave enough room for 12:59 PM.



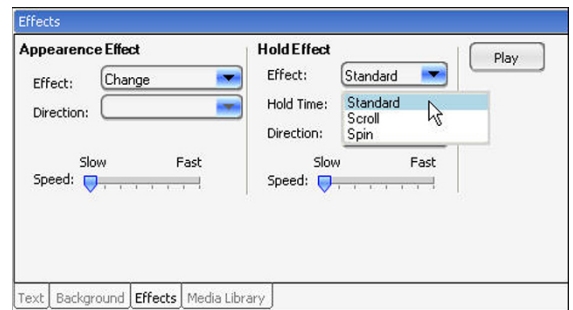
- Save and preview your message.

Our message looks like this:



To change the scroll effect:

- Select the time message box.
- Click the **Effect** tab near the bottom of the ooh!Media window and under Hold Effect, select **Standard** as the Effect. This keeps the message on the sign.



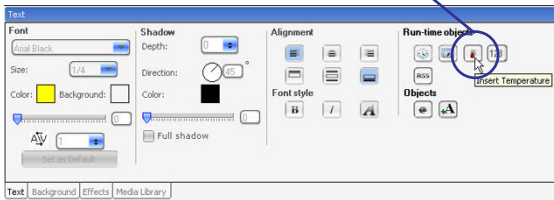
- Save and preview your message.

To add the temperature to the message:

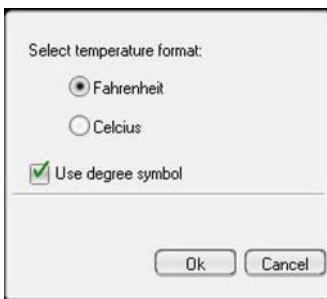
Note: To have this message work on your sign, you must have the optional temperature probe installed. However, you can create a message in ooh!Media without the temperature probe installed on your sign.

1. Make sure nothing is selected in the Emulation Area.
2. On the Text tab, click the thermometer button.

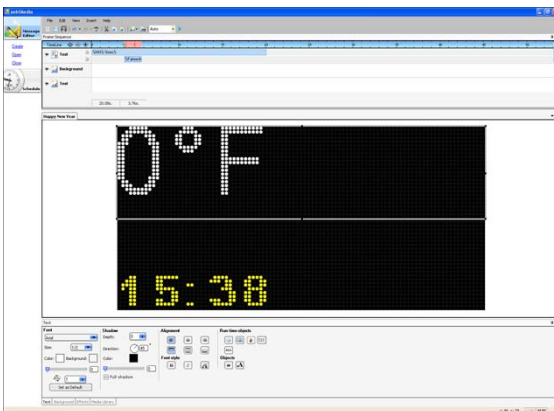
Thermometer button



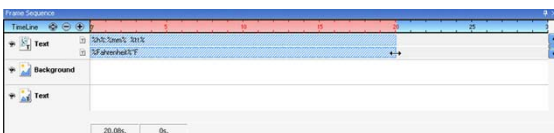
3. The Temperature Format dialog opens, check the **Use Degree Symbol** box and click **OK**.



A temperature message box is added:

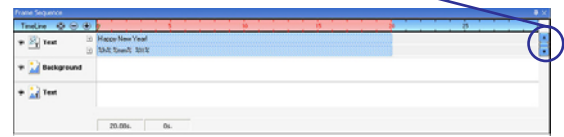


4. Extend the length of the temperature message in the TimeLine so it is the same length as the time message.



If you don't see the temperature message in the TimeLine, use the scroll bar on the right edge of the TimeLine to scroll down until it is visible.

Scroll bar

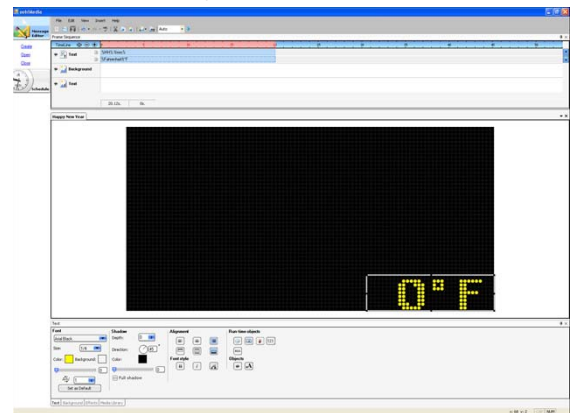


5. Resize and move the temperature box to the lower right corner.

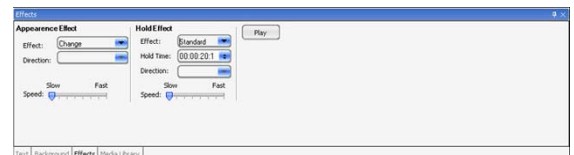


6. Select all the text in the temperature box and do the following on the Text tab:

- Under Font, select **Arial Black**, select **1/4** for the Size, and change the color to yellow.
- Click the right-align button.
- Click the align-bottom button.

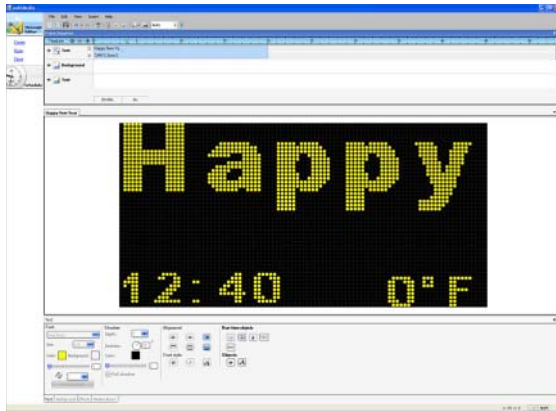


7. With the Temperature box selected, click the **Effect** tab and set the Hold Effect to **Standard**.



8. Save and preview your message.

Our message looks like this:

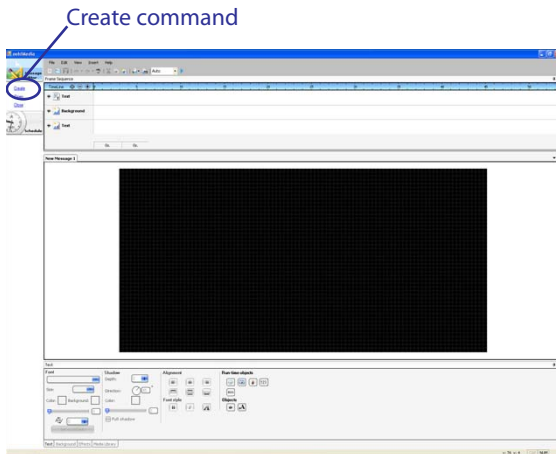


Creating messages with reverse text

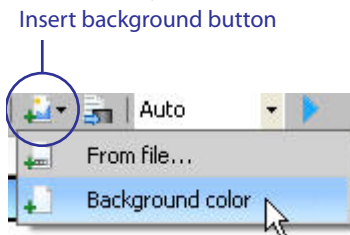
For this example, we will create a new message for the reverse text and make it take the whole sign. We will create a yellow background, set the text color to red, and add a drop shadow.

To create a solid background:

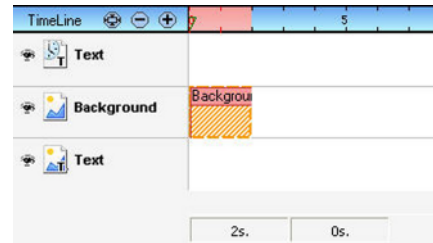
1. Click **Create** to start a new message file.



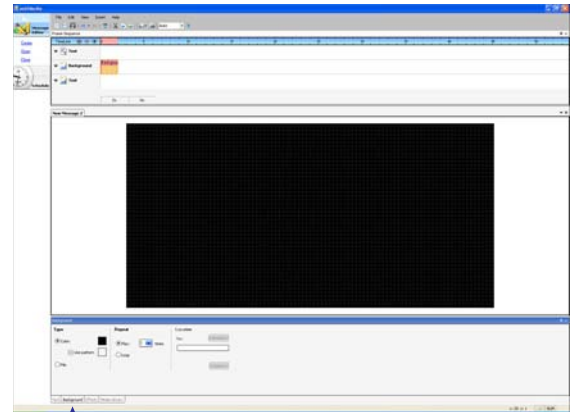
2. Click the Insert button on the button bar and select **Background Color**.



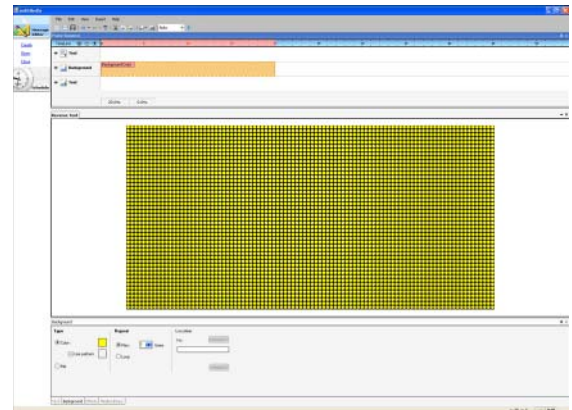
A Background Color box is added to the Background row in the TimeLine.



3. Click the **Background** tab at the bottom of the screen.



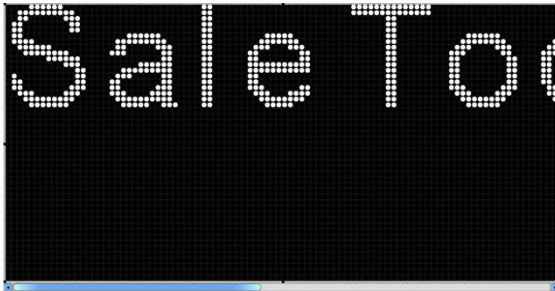
4. On the Background tab under Type, click the **Color** swatch.
5. In the Color dialog, select yellow and click **OK**.
6. In the TimeLine, stretch the Color box to 20 seconds.



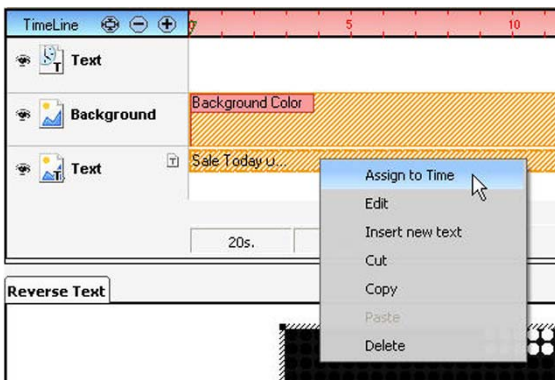
7. Save your message as **Reverse Text**.

To add the text:

1. In the same message, insert a text box by selecting **Text** from the Insert pulldown menu.
2. Select all the text and type the following:
Sale Today Only!
3. Size the text box so it takes up the whole Emulation Area.

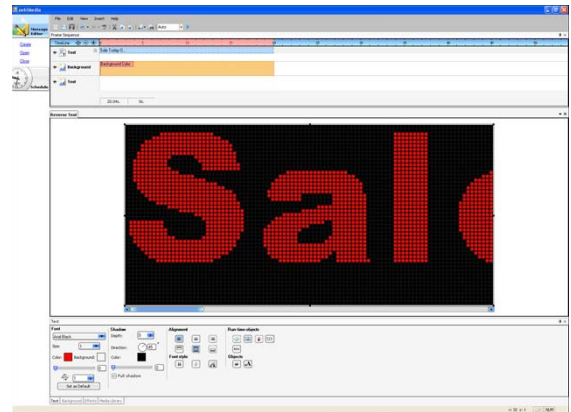


4. If the text message is attached to the Background, right-click the text box in the TimeLine and select **Assign To Time**.



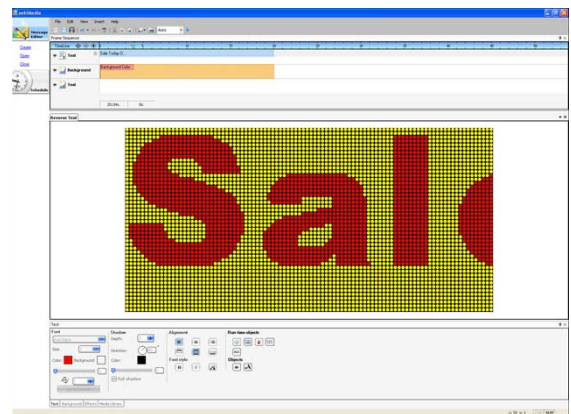
5. Click the **Text** tab and make any other adjustments you want such as aligning the text vertically, using a different font, etc. We changed the font in our message to Arial Black.
6. Under Font, select **1** for the Size so the text takes up the whole sign.

7. Click the **Color** swatch, select Red in the Color dialog, and then click **OK**.



8. Save and preview the message.

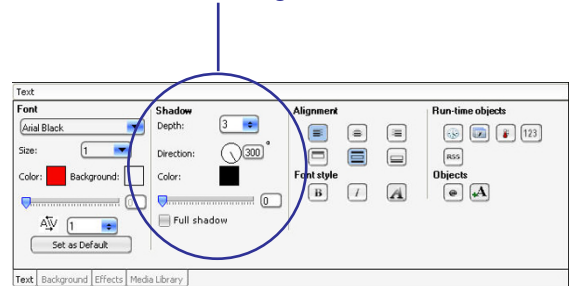
Our message looks like this:



To add a drop shadow:

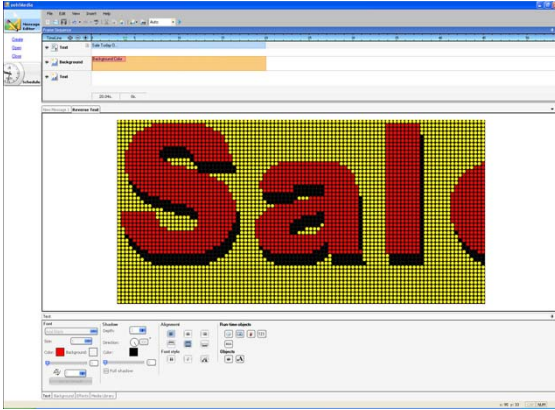
1. Select all the text in the message.
2. On the Text tab under Shadow, enter **3** in the **Depth** box.

Shadow settings



3. Set the direction to **300**.
4. Select black for the drop shadow color and click **OK**.
5. Save and preview your message.

Our message looks like this:



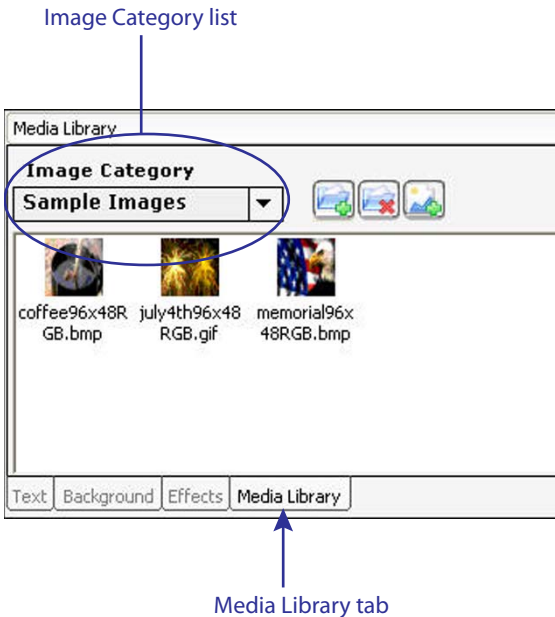
Note: Even though the message only loops once during preview, it will loop continuously on the sign.

Creating messages with animations

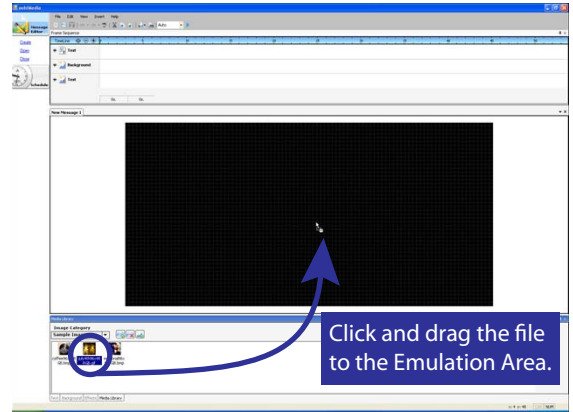
In this example we will use an animation file from the Media Library to create a message for the Fourth of July.

To create a message with an animation:

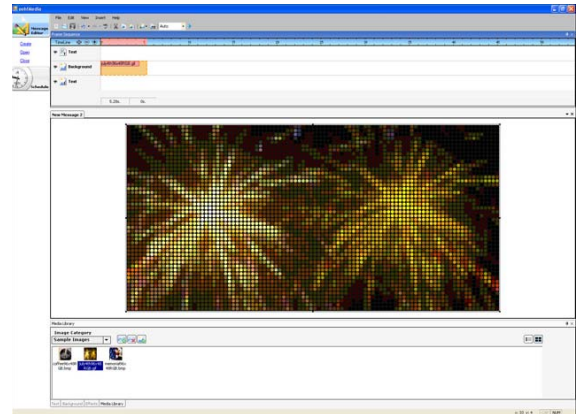
1. In ooh!Media, create a new message.
2. Click the **Media Library** tab at the bottom of the ooh!Media window and select **Sample Images** from the Image Category list.



3. Click and drag the **july4th96x48RGB.gif** file to the Emulation Area.



This adds the animation to the Emulation Area.



4. If the following prompt appears, click **Yes** and ooh!Media will fill the Emulation Area with the animation.



5. In the TimeLine, stretch the message length to 20 seconds.
6. Save the message as **July 4th Animation**.
7. Preview the message.

Creating messages with text and graphics

Now we want to use a graphic as a background and add some of our own text.

There can only be one background in a message, but you can use multiple text boxes.

To create a message a graphics:

1. In ooh!Media, create a new message.
2. Click the **Media Library** tab at the bottom of the ooh!Media window and select **Sample Images** from the Image Category list.

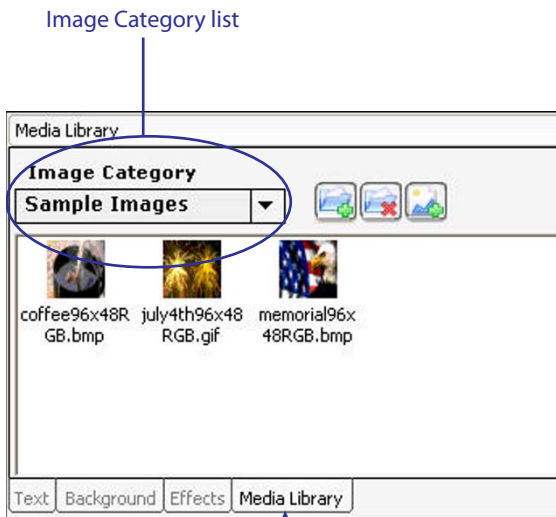
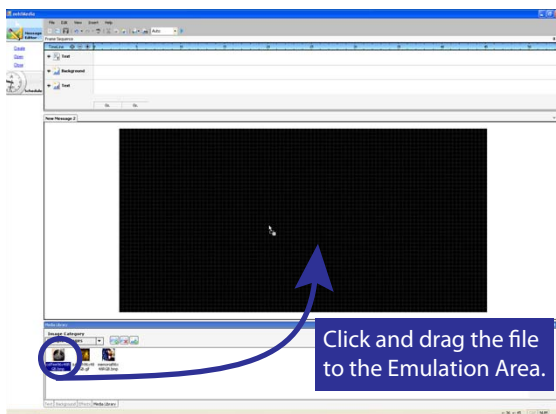


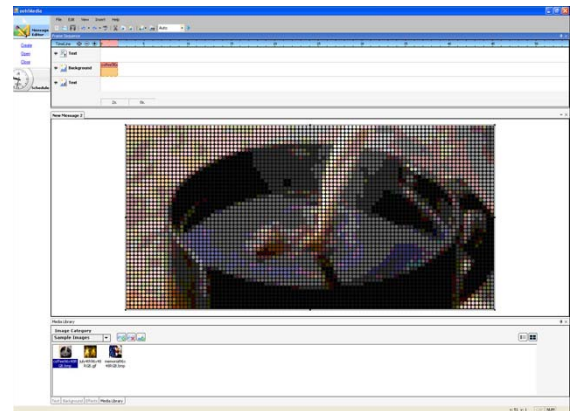
Image Category list

Media Library tab

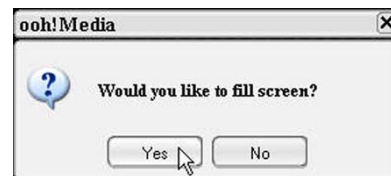
3. Click and drag the **coffee96x48.bmp** file to the Emulation Area.



This adds the image to the Emulation Area.

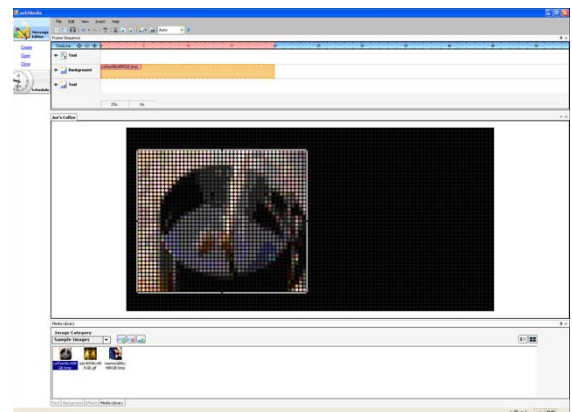


4. If the following prompt appears, click **Yes** and ooh!Media will fill the Emulation Area with the animation.



5. In the TimeLine, stretch the message length to 20 seconds.
6. Size the coffee cup image so it takes up the left half of the Emulation Area.

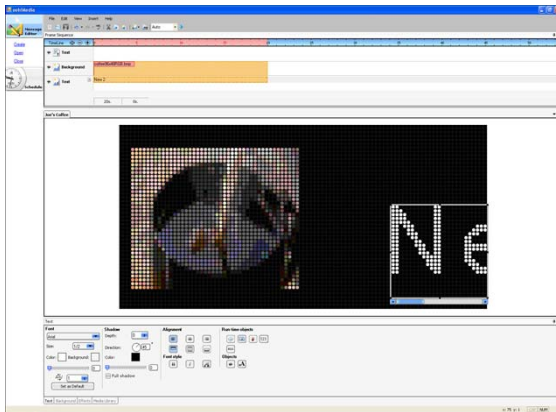
For our sign, we sized the image a little bit smaller. Size and position your message as appropriate for your sign.



7. Save the message as **Joe's Coffee**.

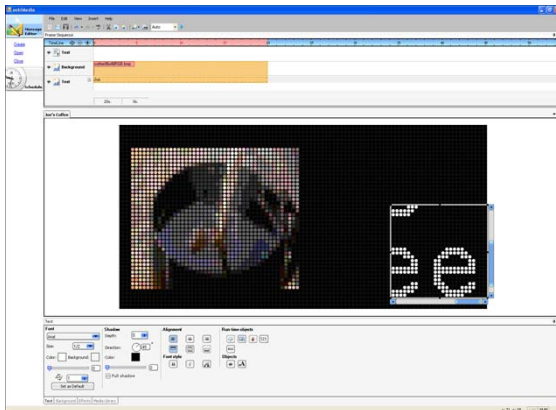
To add the first text box:

1. Click in the other half of the Emulation Area to add a text box.

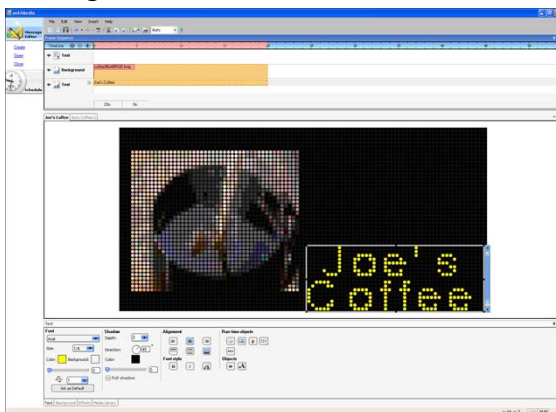


2. Select all the text and type the following:

**Joe's
Coffee**

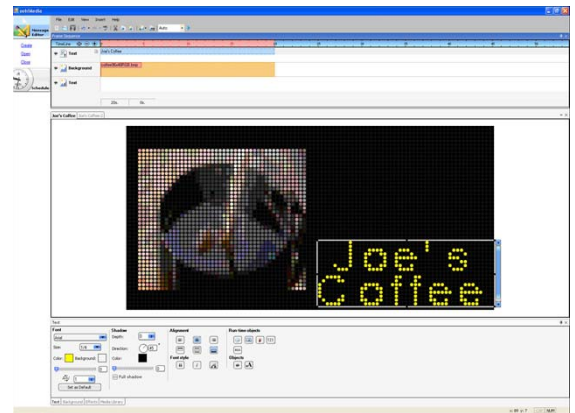


3. In the TimeLine, stretch the new text message to 20 seconds.
4. On the Text tab, set the following:
 - Font to **Tahoma**
 - Size to **1/4**
 - Color to **Yellow**
 - Align to the bottom
 - Align center



6. Position and resize the text box as needed.
7. On the Effects tab, set the Hold Effect to **Standard**.
8. If you preview the message now, you will notice that the text is not visible. Assigning it to the TimeLine makes it visible.

To assign the new message to the TimeLine, right-click it in the TimeLine and select **Assign to TimeLine**.

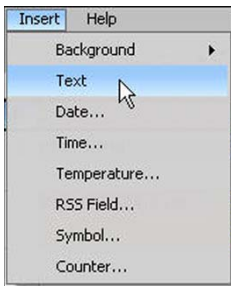


After you assign the text message to the TimeLine, you may need to reposition it in the Emulation Area.

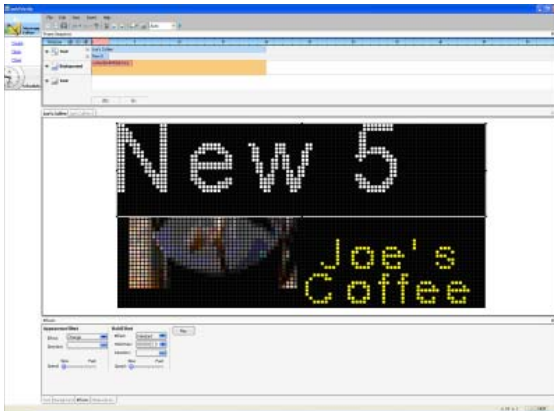
9. Save your message.

To add the second text box:

1. From the Insert pulldown menu, select **Text**.



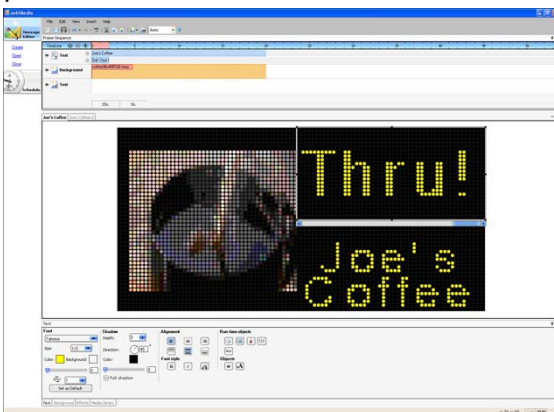
This assigns the text box to the TimeLine.



2. Select all the text in the new text box and type:

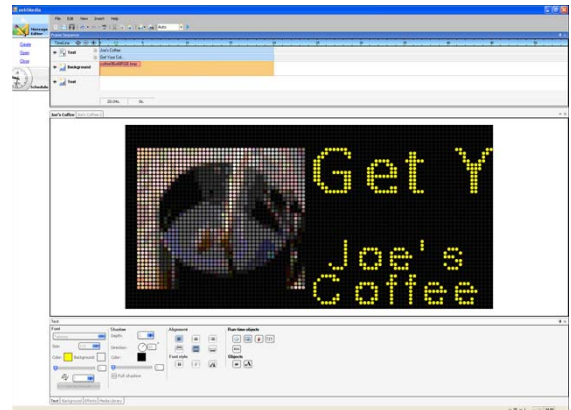
Get Your Coffee at the Drive Thru!

3. On the Text tab, set the following:
 - Font to **Tahoma**
 - Size to **1/3**
 - Color to **Yellow**
 - Align-middle
4. On the Effects tab, set the Hold Effect to **Scroll**.
5. In the TimeLine, stretch the message to 20 seconds.
6. Position the message in the upper right portion of the Emulation Area.



7. Save and preview your message.

Our message looks like this:



Notice the bottom text message stays on the sign while the top one scrolls.