

PRIORITY: Normal

DATE: April 17th, 2015

TITLE: How to install and configure Adaptive Sign Server on a Windows based PC

**PRODUCTS
AFFECTED:** A/J/L Series LED displays

**TOOLS
REQUIRED:** USB to RS485 Adapter cable with LED Serial Connector
PC running Microsoft Windows with 1 available USB Slot and an HDMI or DVI connection
FTDI Chip Drivers
Sign Server Installation program
HDMI to HDMI cable OR DVI to HDMI cable

NOTE: Screenshots in this document are from a PC running MS Windows 7. Your screens may vary.

INTRODUCTION: The internal functions of the LED display must be continuously monitored in order to prevent the display from overheating and keep it operating correctly. This monitoring is done by a custom software application called “Adaptive Sign Server” which communicates to the display via RS-485 connection between the host PC and the LED Display. Sign Server is preloaded on the controller when the controller is embedded in the sign by Adaptive. However, the number of customers that have expressed an interest in controlling the signs directly from their own PC has created the need for a stand-alone version of the program.

Upon completion of the steps outlined in this technical memo, the host PC should be connected to the LED display and controlling the content on the face of the LED display.

**DOWNLOAD
INSTALLATION
PACKAGE:**

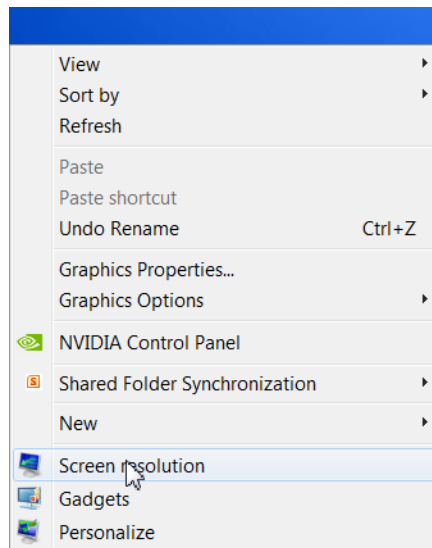
You will need to download and unzip the installation files for this Tech Memo by following the link:

<https://www.dropbox.com/s/rkzp29kh34r13gj/TECH%20MEMO%2015-0001.zip?dl=0>

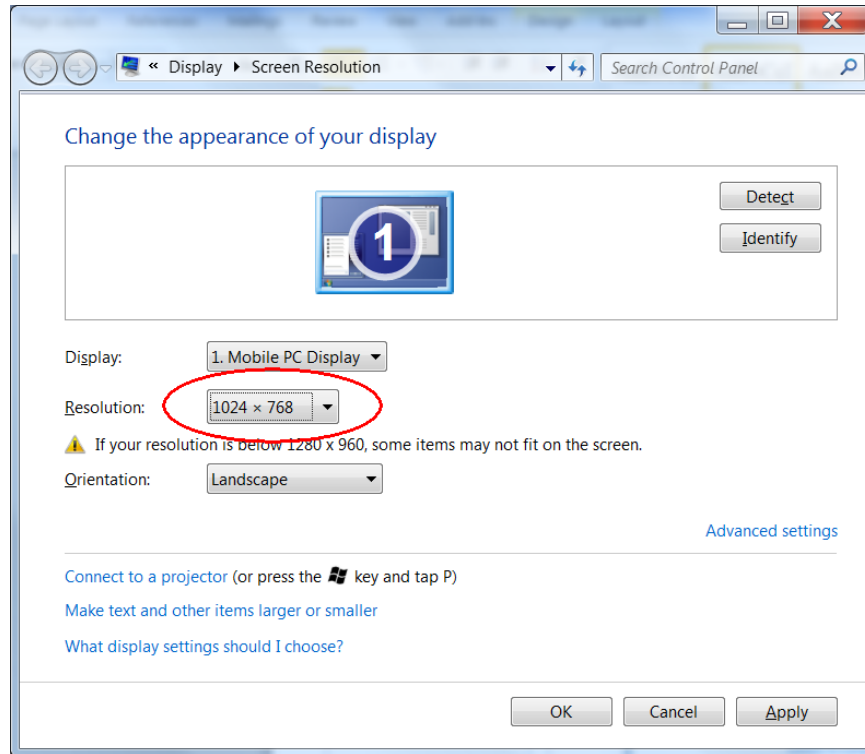
**SCREEN
RESOLUTION:**

Adjust the screen resolution of the host PC to 1024 x 768.

- Right click on a blank area of the Windows desktop and select Screen Resolution from the popup menu.

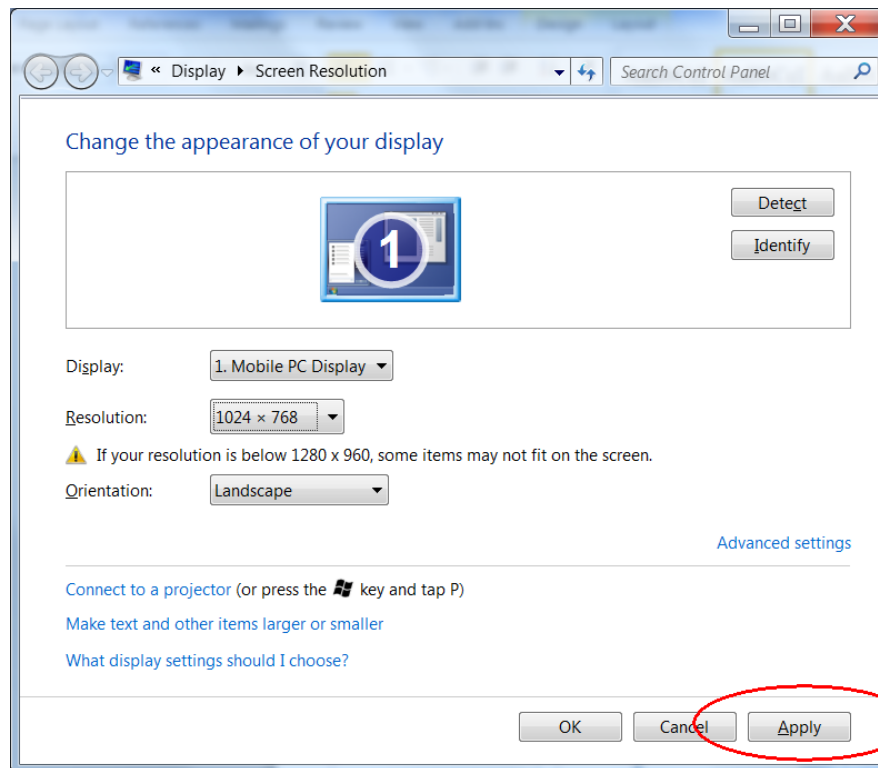


- Change the Resolution to 1024x768



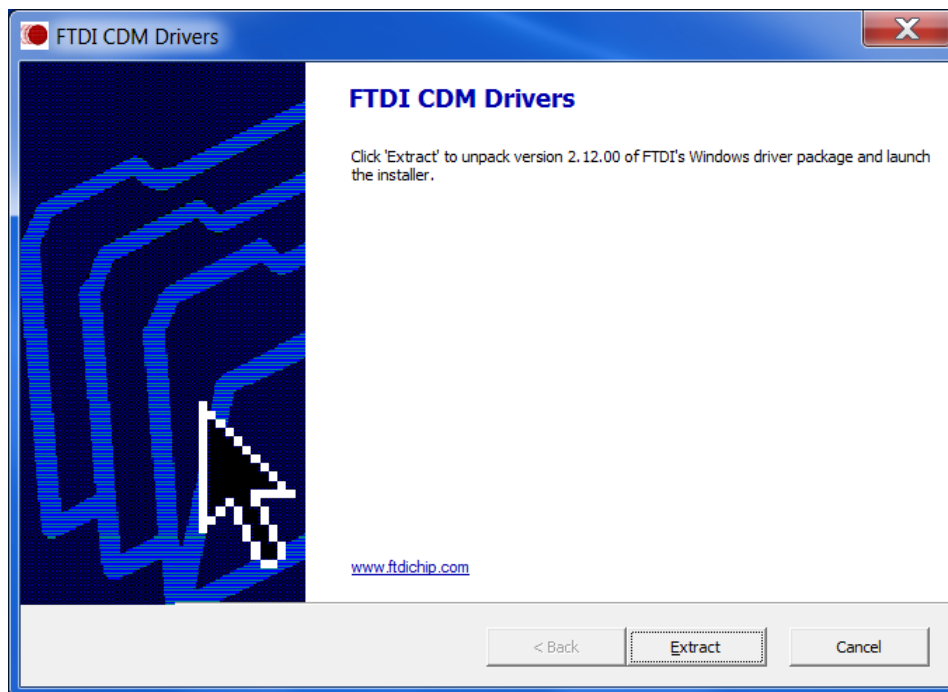
CAUTION: Running the display at a resolution higher than 1024x768 may damage the LED display.

- Click the Apply button.

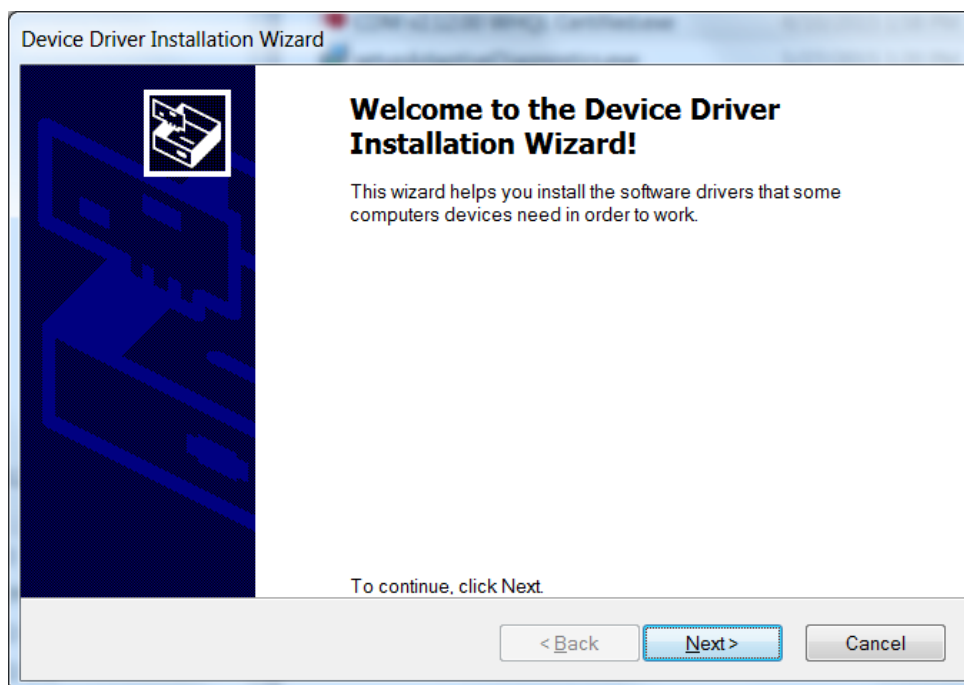


**INSTALL THE
USB to RS485
DRIVER:**

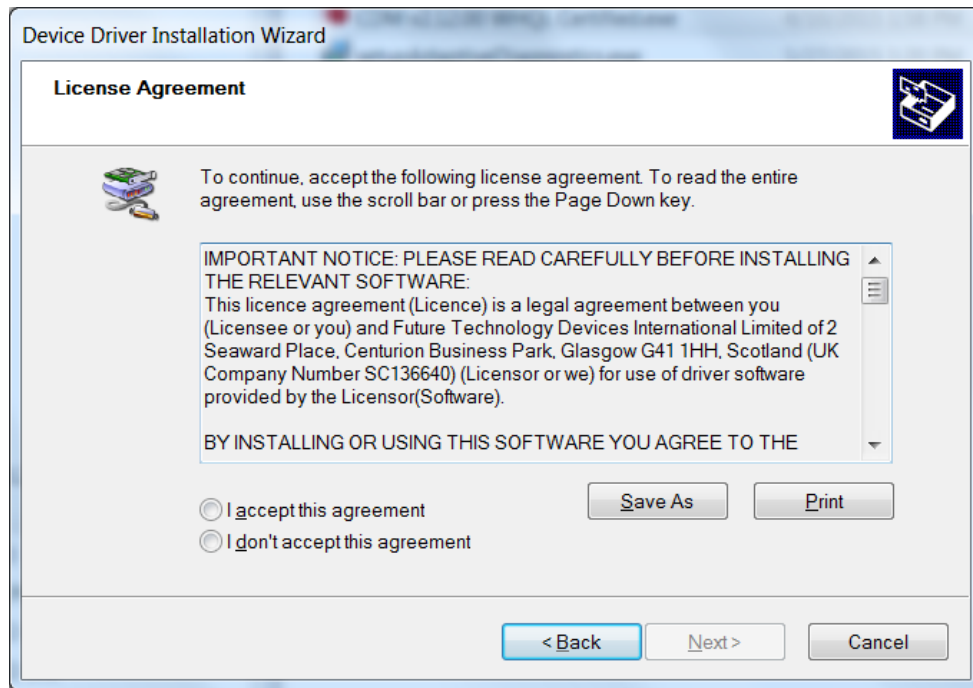
From the installation package, double click the icon for the CDM v2.12.00 WHQL Certified installation program.



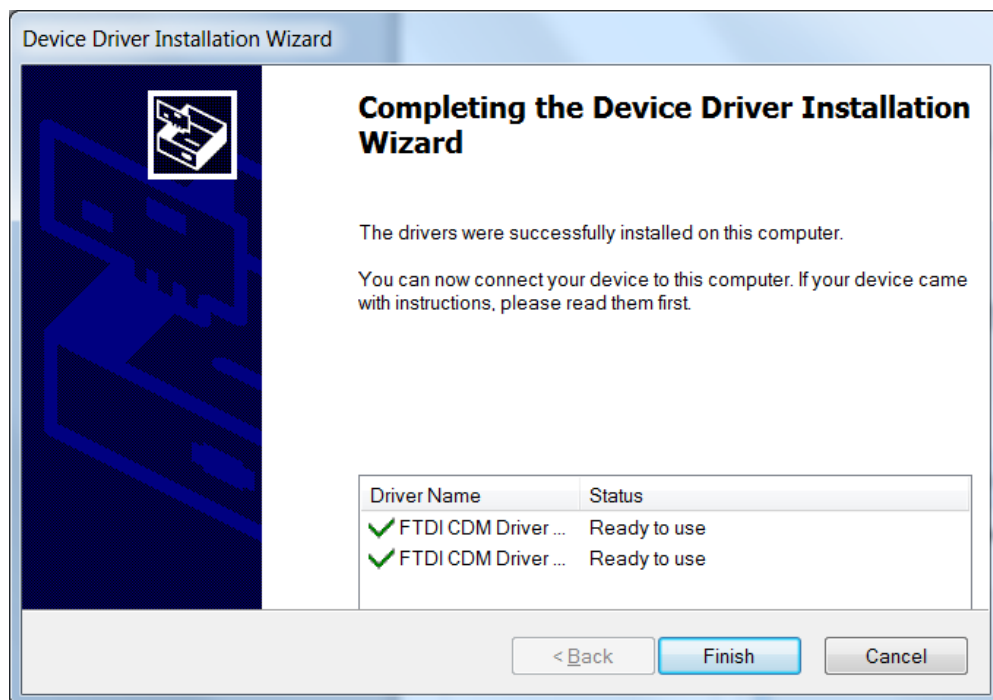
Click the EXTRACT button to decompress the driver installation files and proceed to the next screen.



Once the files have been extracted, click the NEXT button to begin the installation of the drivers.



You must accept the agreement in order to use the drivers, and the Sign Server software. Click NEXT after accepting the agreement.



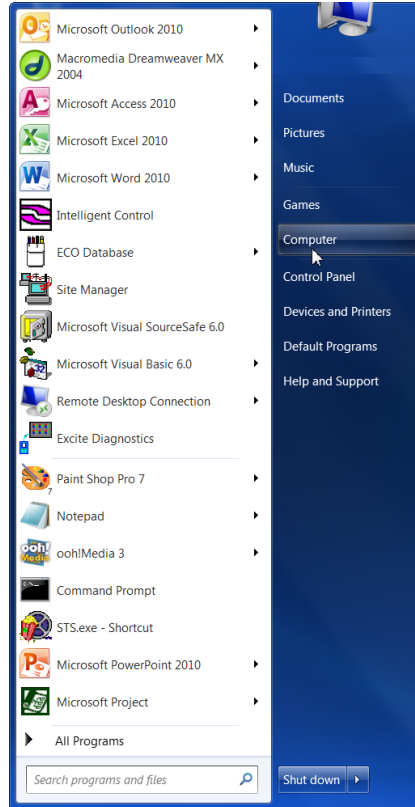
Click FINISH once the installation of the drivers has been completed.

**PLUG IN THE USB
TO RS485 CABLE
INTO YOUR
COMPUTER:**

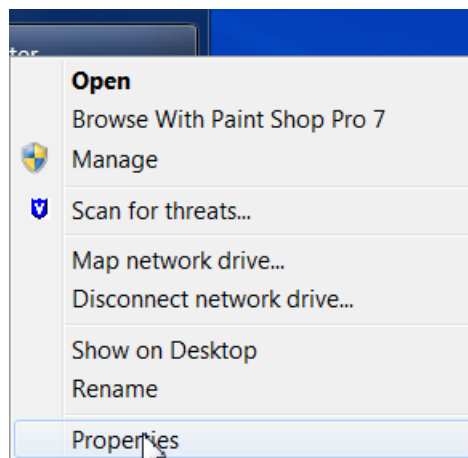
Plug the USB to RS485 Adapter cable into a USB slot on your local PC.

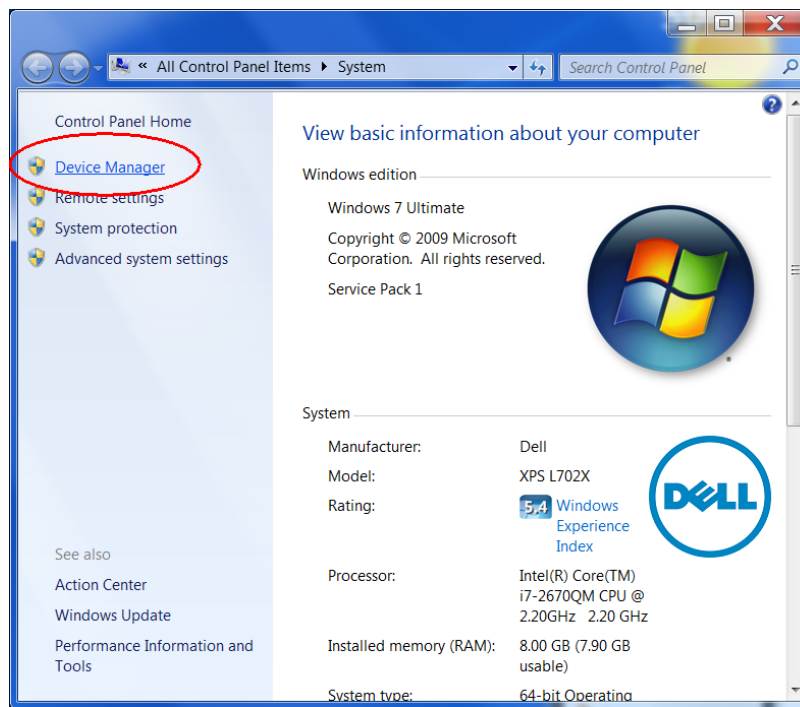
**DETERMINE
COM PORT:**

Click on the START button of your Windows desktop.

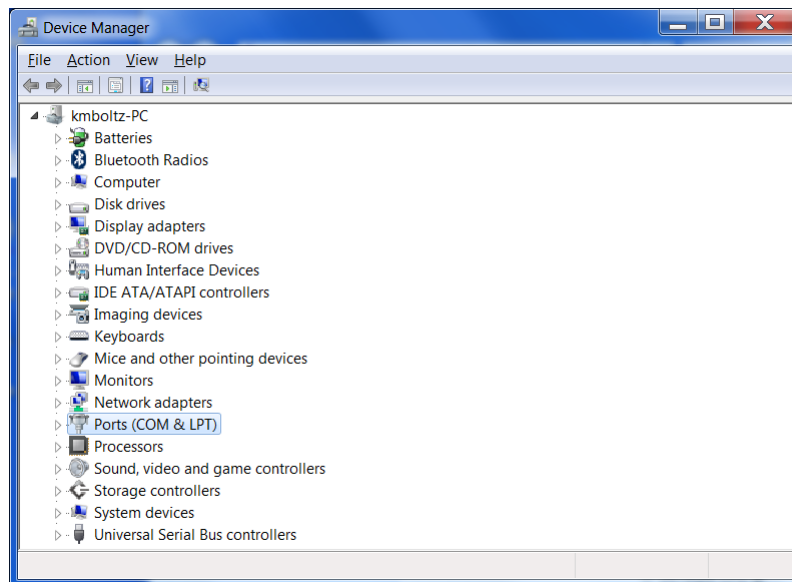


Right click on the COMPUTER icon and select PROPERTIES from the popup menu.

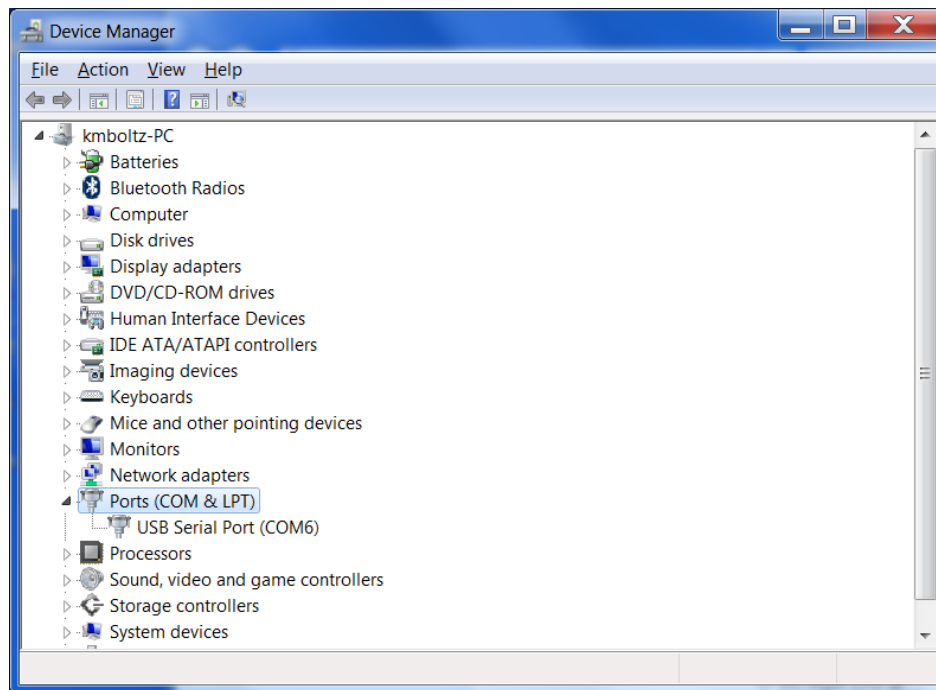




Click on the DEVICE MANAGER link.



Scroll down until you can see the PORT (COM & LPT) section. Click on the Arrow to expand the group.



Make a note of what COM port is shown next to the USB Serial Port.

NOTE: If there is more than 1 USB Serial Port shown, you can unplug and replug the adapter to see which one is removed and readded to the list.

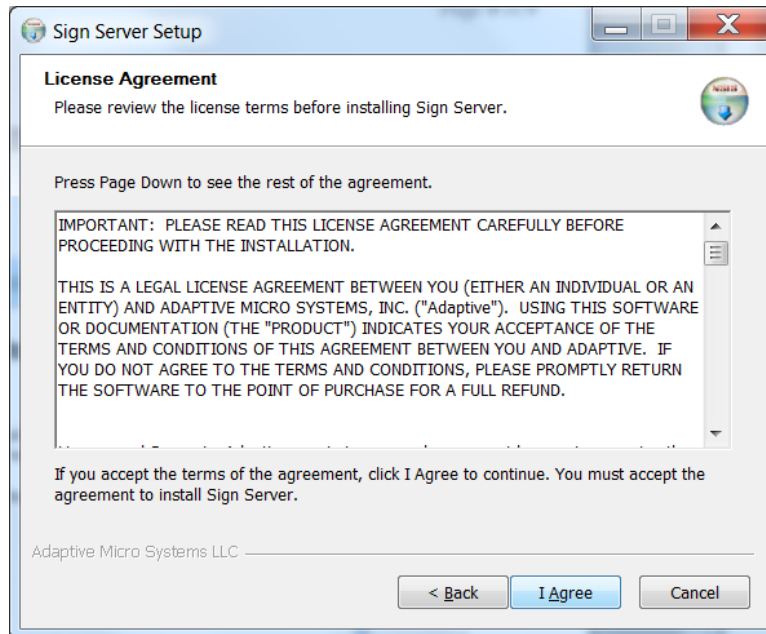
You can now close the Device Manager and the System Properties windows on your desktop.

**INSTALL SIGN
SERVER:**

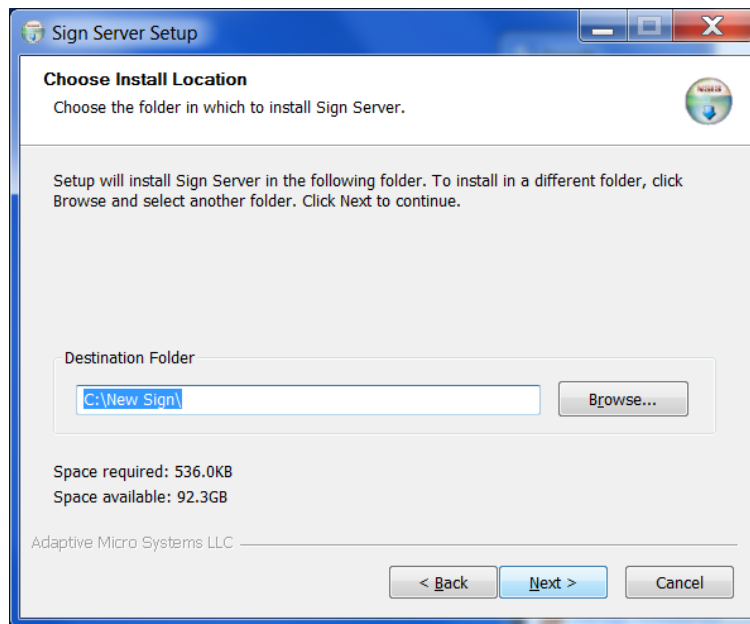
From the distribution package, double click on the icon for SignServerSetup.exe. This will begin the installation process of the Adaptive Sign Server.



Click the NEXT button to begin the installation process.

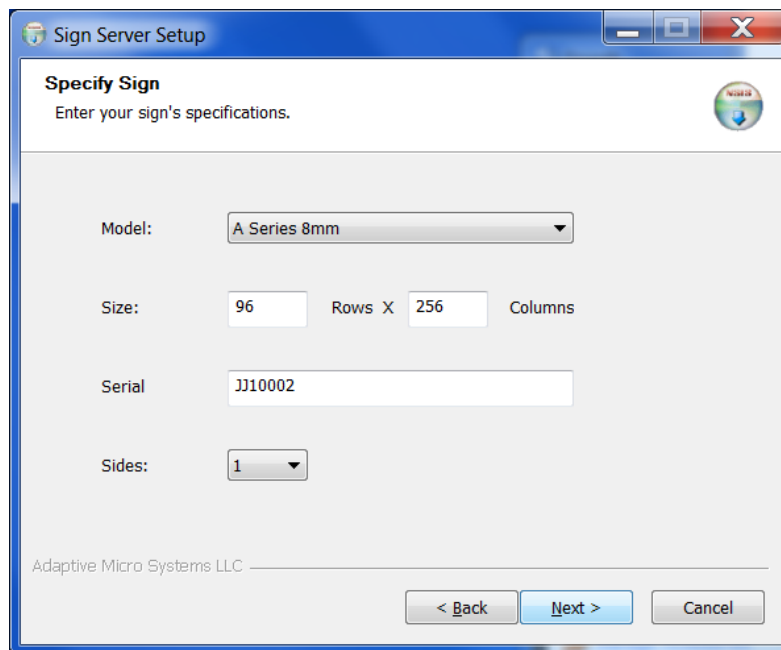


You must agree to the License Agreement in order to proceed with the installation of the Adaptive Sign Server application.



Enter in the path of the location you want to install the program into.

NOTE: If you wish to communicate with the LED display using Adaptives ooh!Media software package, it *must* be installed to the C:\HARDDISK\USER folder.

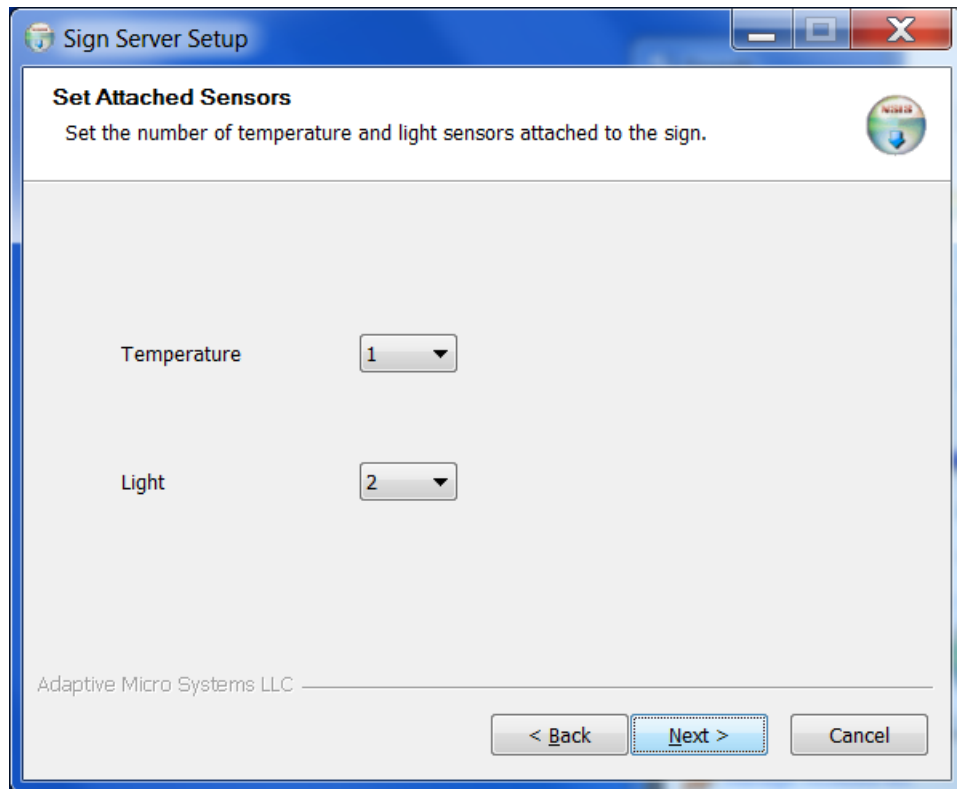


From the MODEL drop down, select the appropriate type of LED display that you will be using.

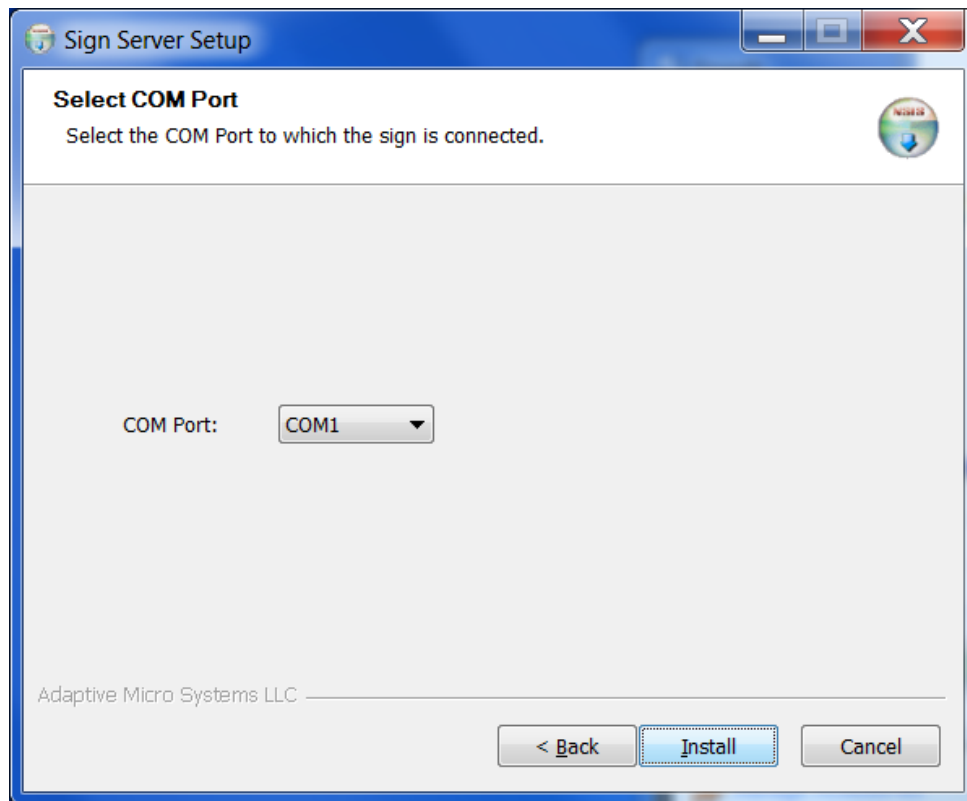
Enter in the Size of the LED display in ROWS and COLUMNS.

Enter in the Serial number of the sign.

Enter in the number of sides (LED display faces) that the LED display has.
When ready to proceed with the installation click Next.

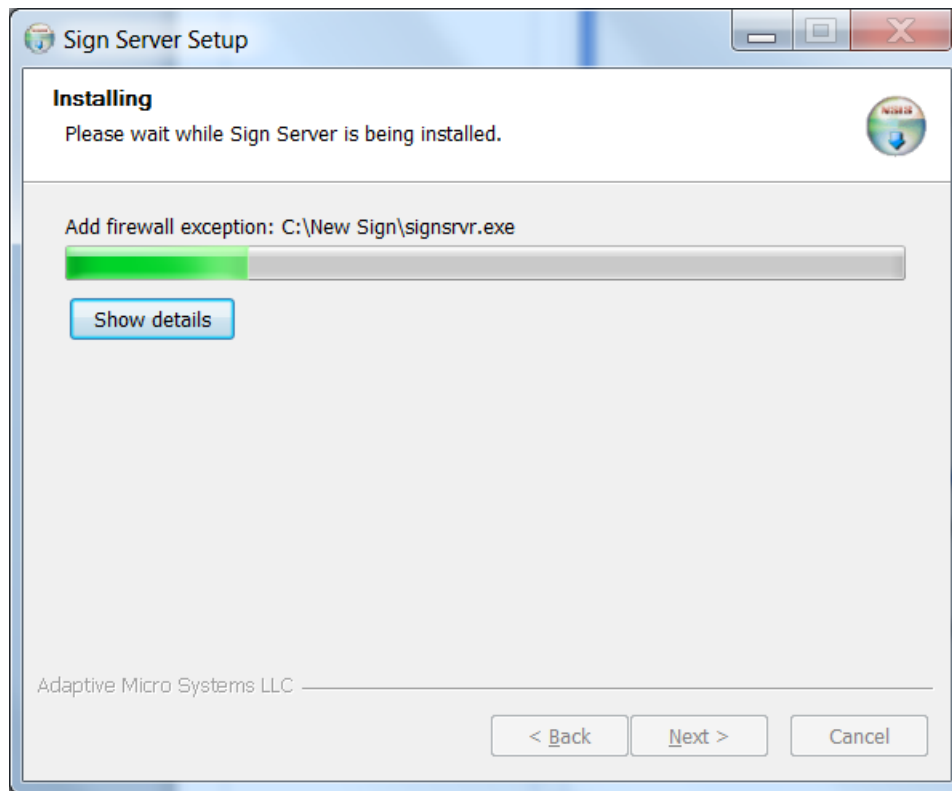


Enter in the number of Temperature and Light sensors attached to the display. For J and L Series, this is typically zero (0).

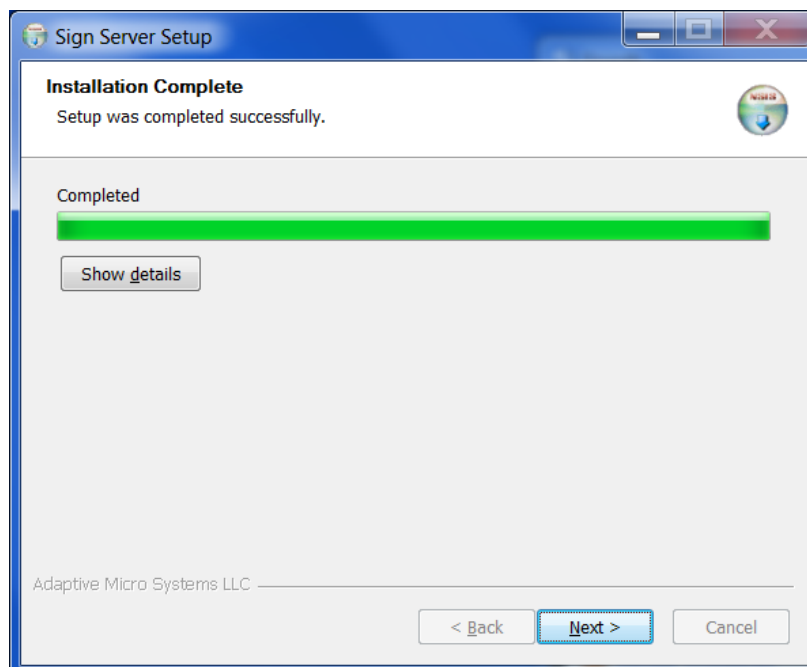


Referring to our notes from earlier, select the COM port assigned to the USB to RS485 adapter.

Click the **INSTALL** button to proceed with the installation of the Adaptive Sign Server application.

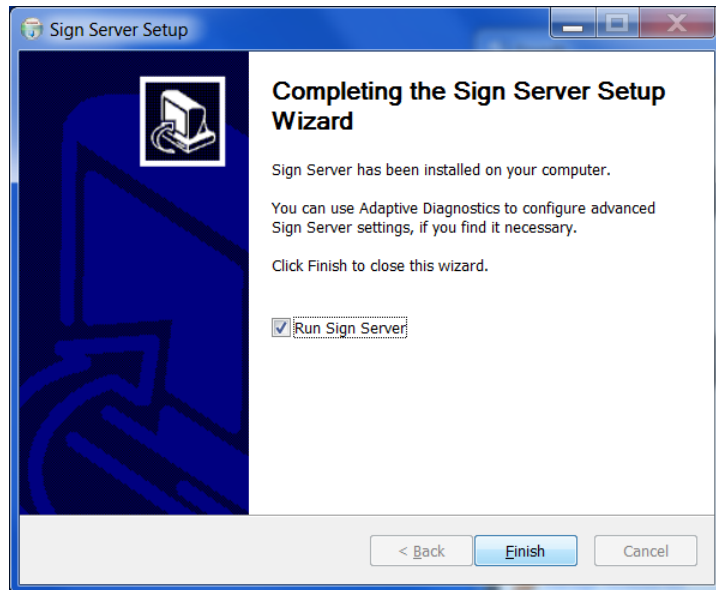


The installation program will automatically install the files in the desired location and configure the software to automatically start on reboot by placing a shortcut in the System STARTUP folder of your Start menu.



When the installation is completed, click NEXT to proceed to the final installation

screen.



Uncheck the RUN SIGN SERVER box if you do not want Sign Server to be launched immediately.

Click FINISH when done.

Assuming that you have launched SIGN SERVER, you should see a new icon for it on the system tray as shown below.



NOTE: The first time you run the Adaptive Sign Server, you may be prompted to allow an exception to the firewall for Sign Server.

CONNECT LED DISPLAY:

NOTE: BEFORE PROCEEDING PLEASE ENSURE THAT YOUR COMPUTER DISPLAY PROPERTIES ARE SET AT 1024x768 AS DETAILED ABOVE.

IF THE BACK OF YOUR DISPLAY HAS MORE THAN ONE HDMI CONNECTOR – PLEASE ENSURE THAT YOU ARE PLUGGING THE HDMI FROM THE HOST PC INTO THE CONNECTOR LABELED HDMI-IN.

Connect the HDMI to HDMI cable or the DVI to HDMI cable from your PC to the HDMI IN on the back of the LED display.

Connect the Serial connection from the USB to RS485 cable to the RS485 DATA IN on the back of the LED display.

Allow up to 2 minutes for the face of the LED display to light up if Sign Server was already running before the display was hooked up to the PC.

DISPLAY CONTENT: Whatever information or screen that is shown in the top left corner of the host PCs Window Desktop will be shown in real time on the face of the LED display. The larger the LED display the larger the area of the desktop that can be shown on the LED display.

ROWS = the HEIGHT of the LED display

COLUMNS = the WIDTH of the LED display

PROBLEMS: If the USB to RS485 converter is changed to a different cable, it is possible that the COM PORT assigned to it by MS Windows will be changed. The information used by Sign Server is stored in the PLAYER.INI file which is located in the CONFIG folder of the installation folder (Typically C:\HARDDISK\USER\CONFIG\PLAYER.INI). If necessary, open the file and change the hwport=COMX: entry to the value of the new assignment as determined by Device Manager (see above).

EXTRAS: If you want to use the ooh!Media Player, please copy the files and folders found in the “Add to Install Folder to Run Ooh!Media Player and Content” into the C:\HARDDISK\USER folder and restart your PC.