




TitanETX Controller

- New generation fanless controller board designed to control the following range of signs:
 - ALPHA 
 - Street Smart 
 - Excite 
- Indoor & Outdoor Applications
- Built on the latest industrial PC architecture
COMExpress + Adaptive's Carrier board
- Wide range of connectivity
- Modular software architecture opened to customer's applications
- HMI based on an embedded Web Server

COMExpress Module

- Processor Intel Celeron M 370 1.5Ghz, 1MBL2
- Chipset Intel 915GM + ICH-6
- Multiples configurations (power) available according to the needs
- RAM 1GB DDR2
- HDD Compact Flash 2GB



LEDs Driver Board Interfaces

- x4 TTL outputs - Street Smart
- x8 TTL outputs - ALPHA
- x16 LVDS outputs - Excite

Adaptive's Sensors

- x1 RS485 serial port - Temp.
- x1 RS485 serial port - Luminosity

High speed communication

- x1 10/100/1000MB Ethernet port
- x1 10/100MB Ethernet port
- x4 USB 2.0 ports

Low speed communication

- x1 RS232 serial port
- x1 RS485 serial port

Wireless communication (option)

- x1 Zigbee radio module

Industrial communication (option)

- x8 Discrete inputs
- x2 Analog inputs
- x1 Industrial network (fieldbus) (Profibus-DP, Modbus, DeviceNet,...)

Audio & Video Outputs

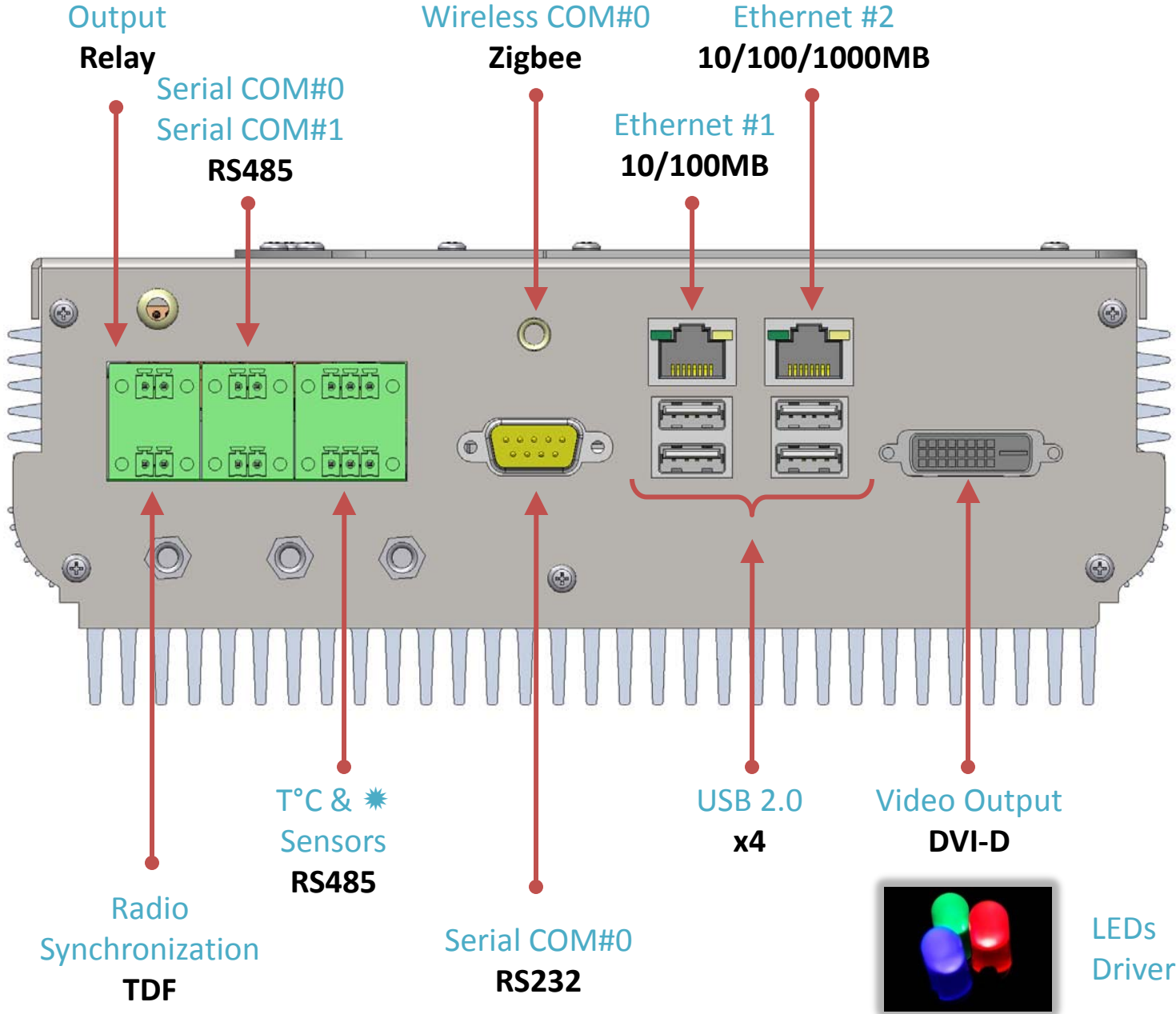
- x1 DVI-D output
- x1 VGA output
- x1 Audio AC'97 output

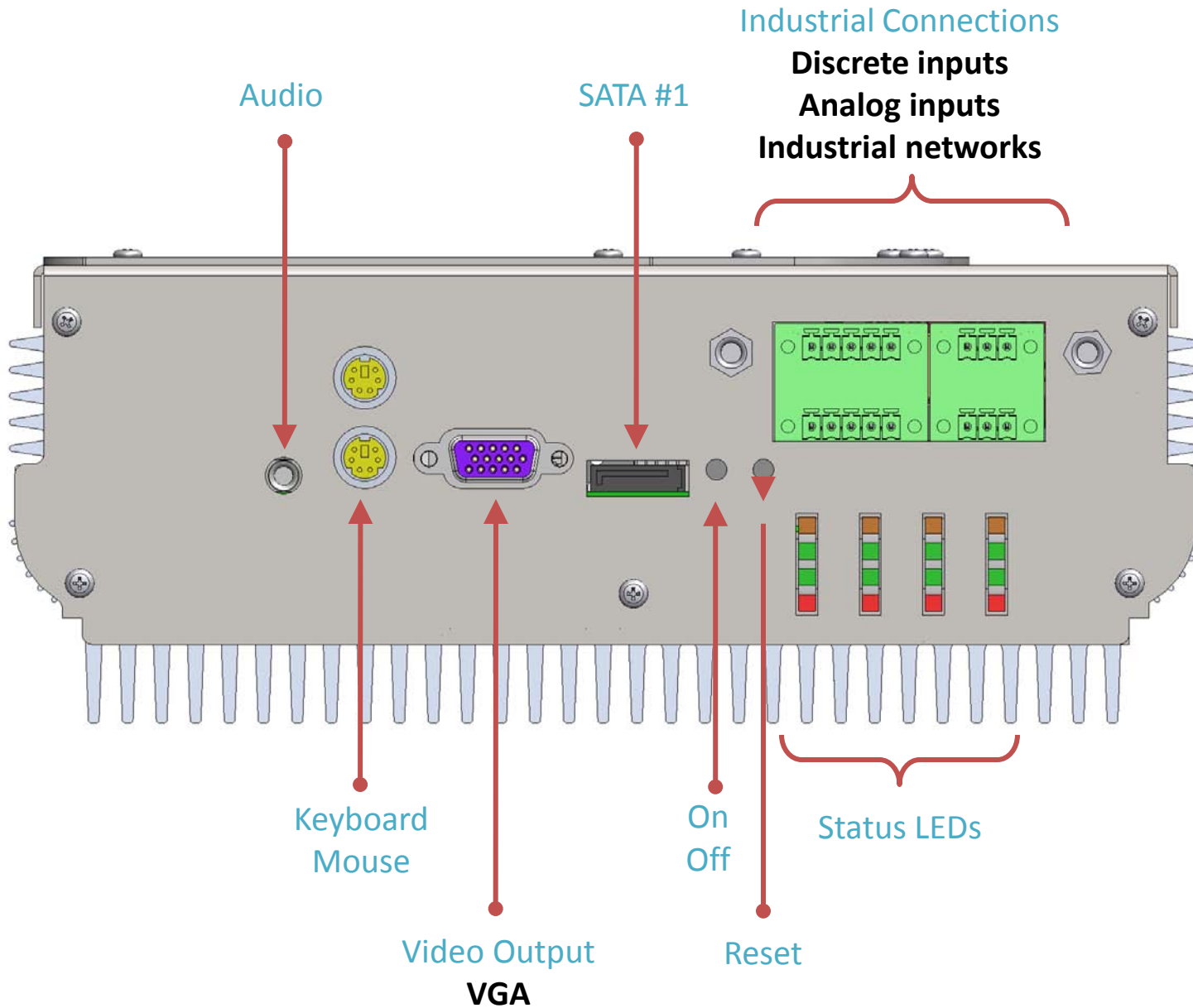
Storage units

- x2 SATA interfaces
- x1 IDE interface
- x1 USB interface
- x1 Zepher interface
- x1 Compact Flash interface

Accessories

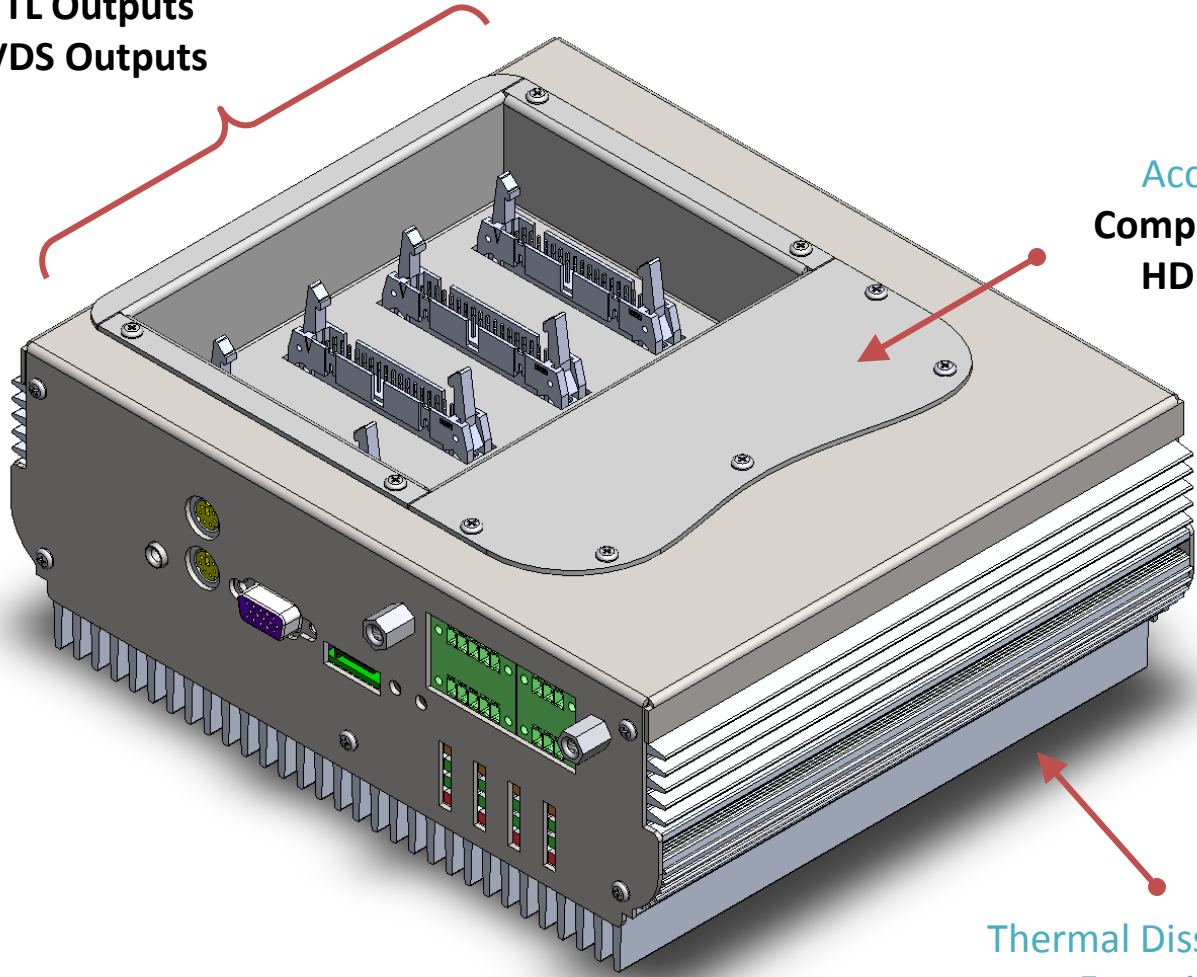
- x1 Relay output
- x1 TDF (radio synchronization) input
- x1 Keyboard
- x1 Mouse
- x1 Reset button
- x1 On/Off button
- x16 Status LEDs
- x8 Micro switches







LEDs Driver Board
Interfaces
TTL Outputs
LVDS Outputs



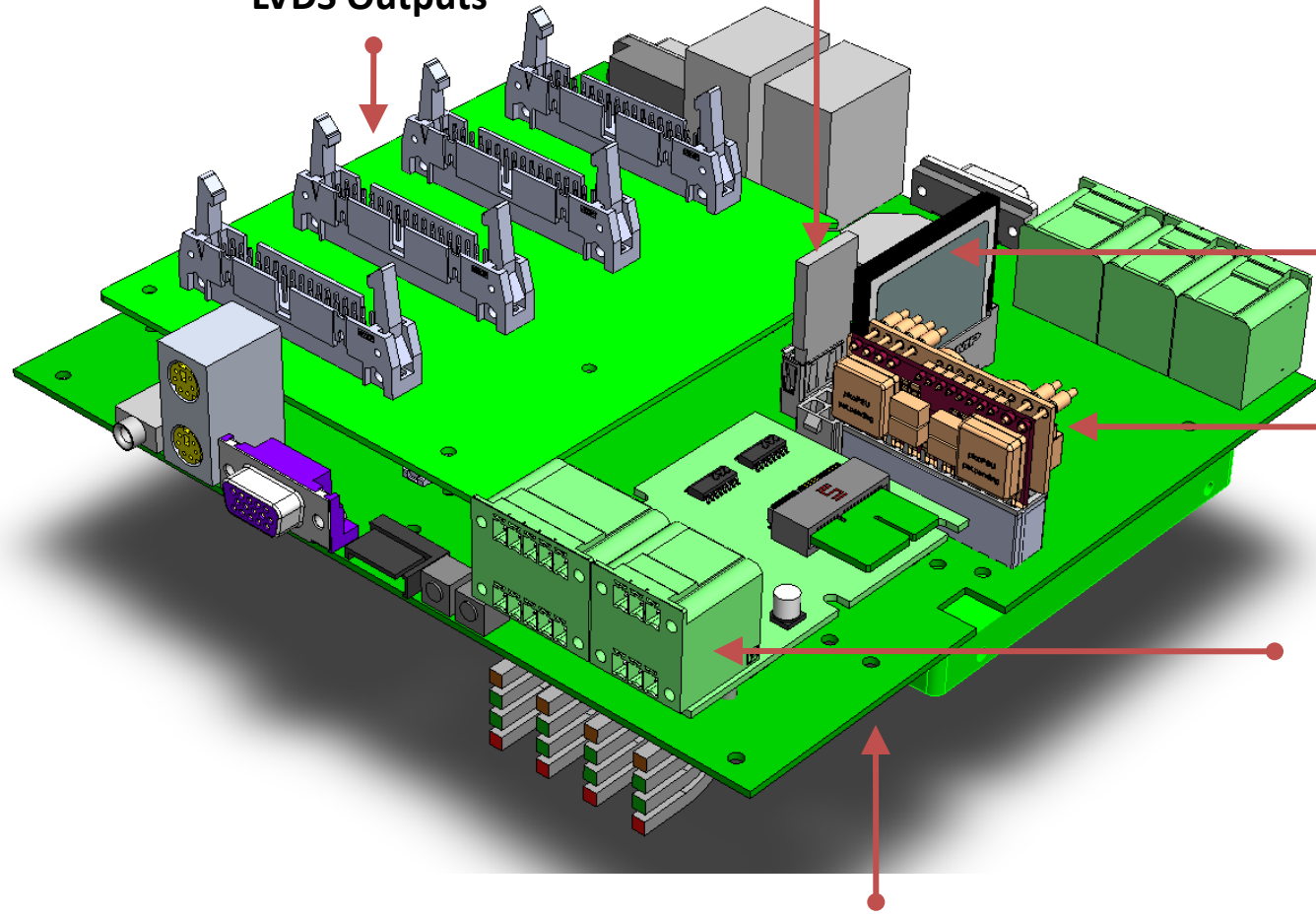
Access to
Compact Flash
HDD USB

Thermal Dissipation
Extrusion



LEDs Driver Board
Interfaces
TTL Outputs
LVDS Outputs

HDD
USB Key

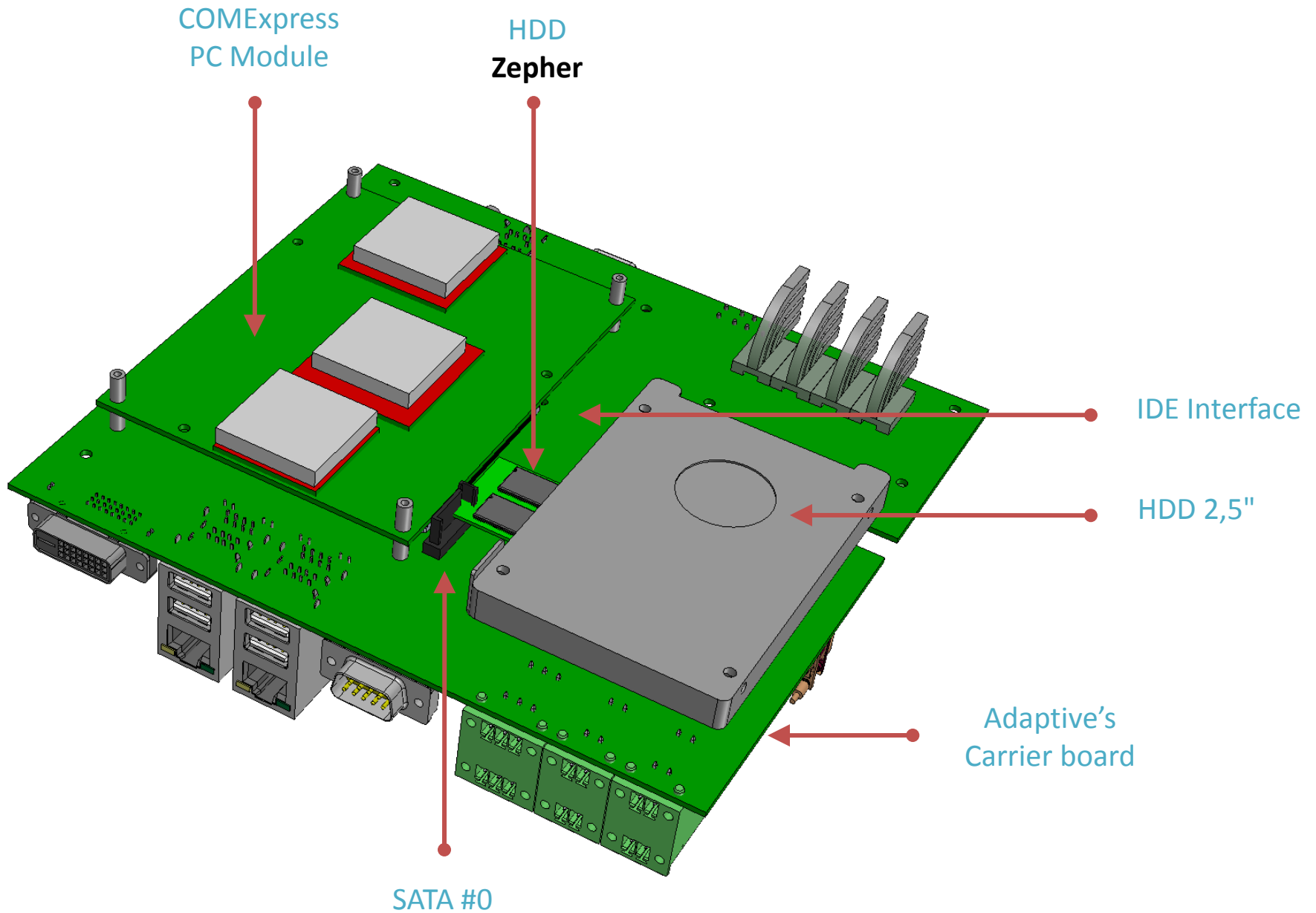


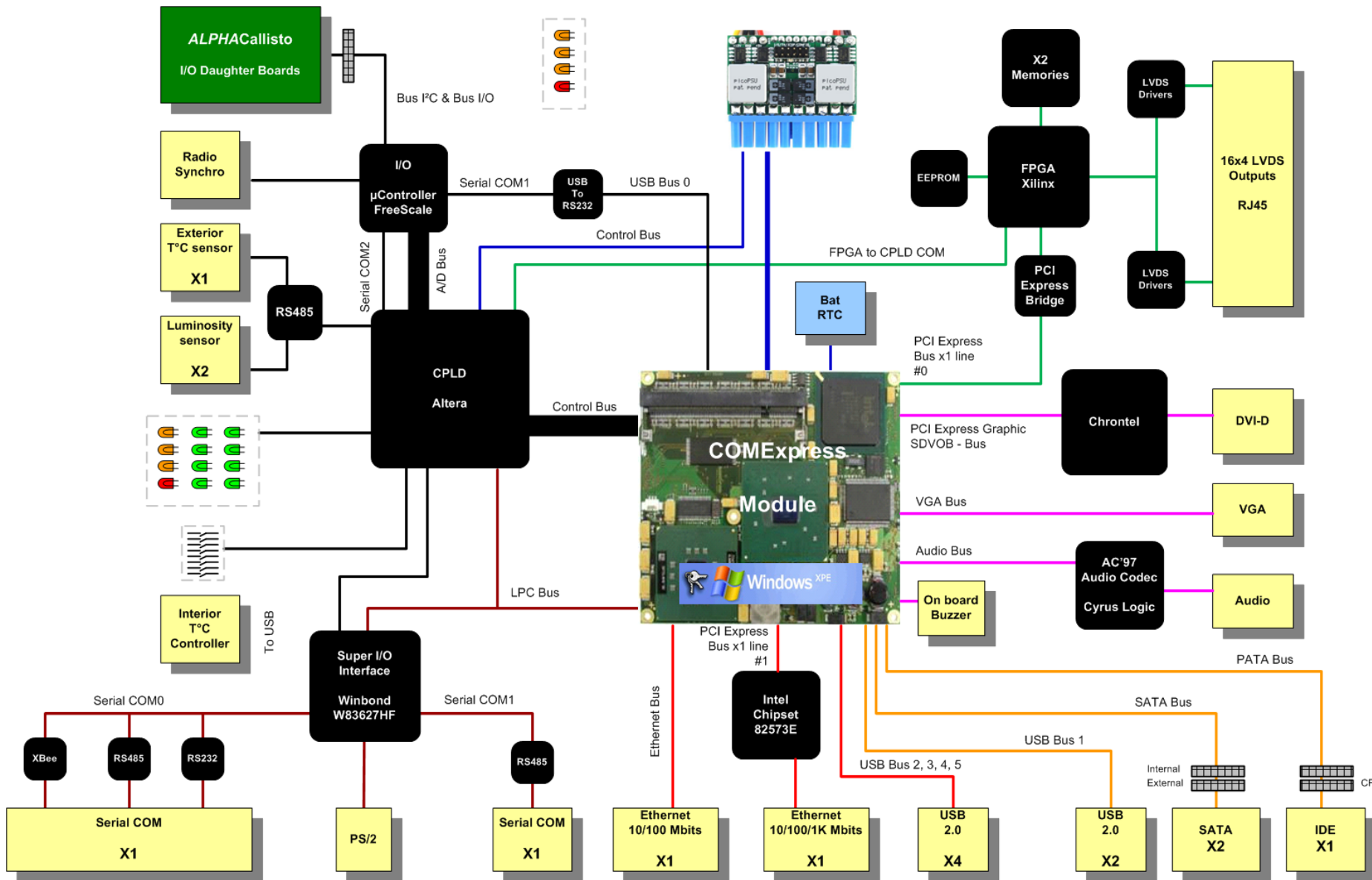
HDD
Compact Flash


ATX
Power supply

Industrial Connections
Discrete inputs
Analog inputs
Industrial networks

Adaptive's
Carrier board





- **Windows XP embedded** operating system 
- Modular & opened software architecture developed in C++, C# et ASP.Net
- Inter process communication made via **socket TCP/IP**
- Possibility to integrate within the existing architecture **customer's applications** for specific needs with the help of DLLs provided by Adaptive
- HMI (multi language) based on an embedded **Web Server**
- Software modules **developed & provided** by Adaptive
 - Web Server
 - Display engine for the LEDs Driver Boards control
 - Video Player manager
 - Industrial, custom an internet communication interfaces
 - Diagnostic tools
 - Communication protocol (inter process) and DLLs

Smart Systems

Servers, Services, ...



010011...
Custom & Internet Protocols
...101001

Users

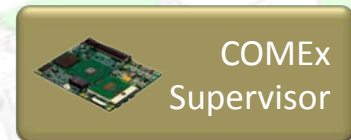


Industrials Systems

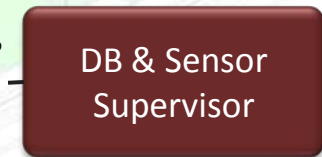
PLC, sensors, ...



0-10V, 4-20mA, 0/1, ...
Industrial Communication
Profibus-DP, DeviceNet, Modbus, ...



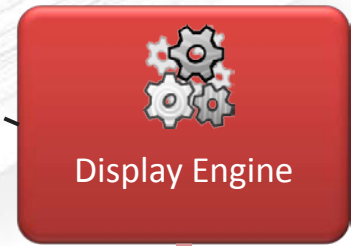
COMex
Supervisor



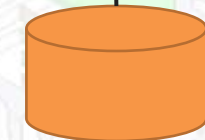
DB & Sensor
Supervisor



Player Manager



Display Engine



Common DB



TCP/IP

TCP/IP

TCP/IP

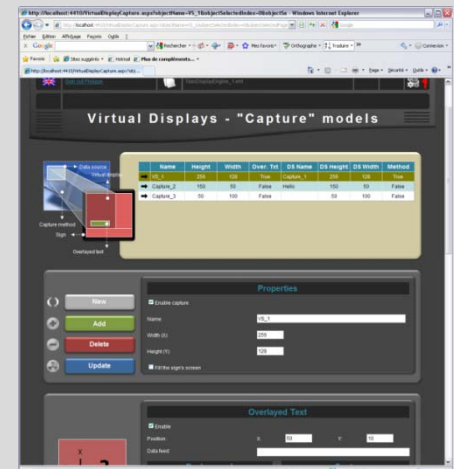
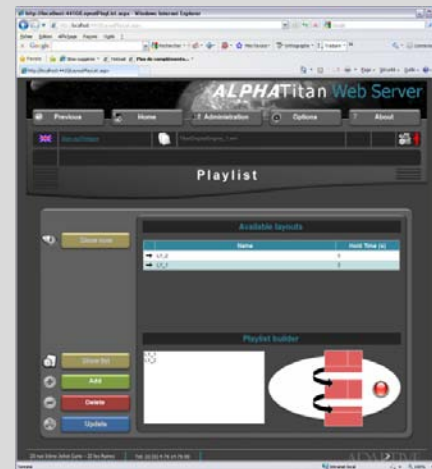
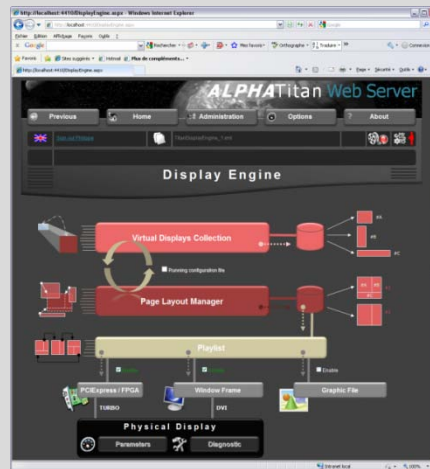
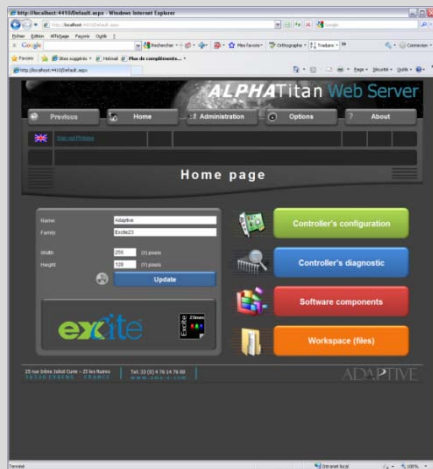
TCP/IP

TCP/IP

TCP/IP



- Controller's & sign's **Web portal**
- **Multi users** access
- Allow to **configure & control** all embedded applications remotely
- Allow to perform full diagnostic of the sign and of its components
- ...





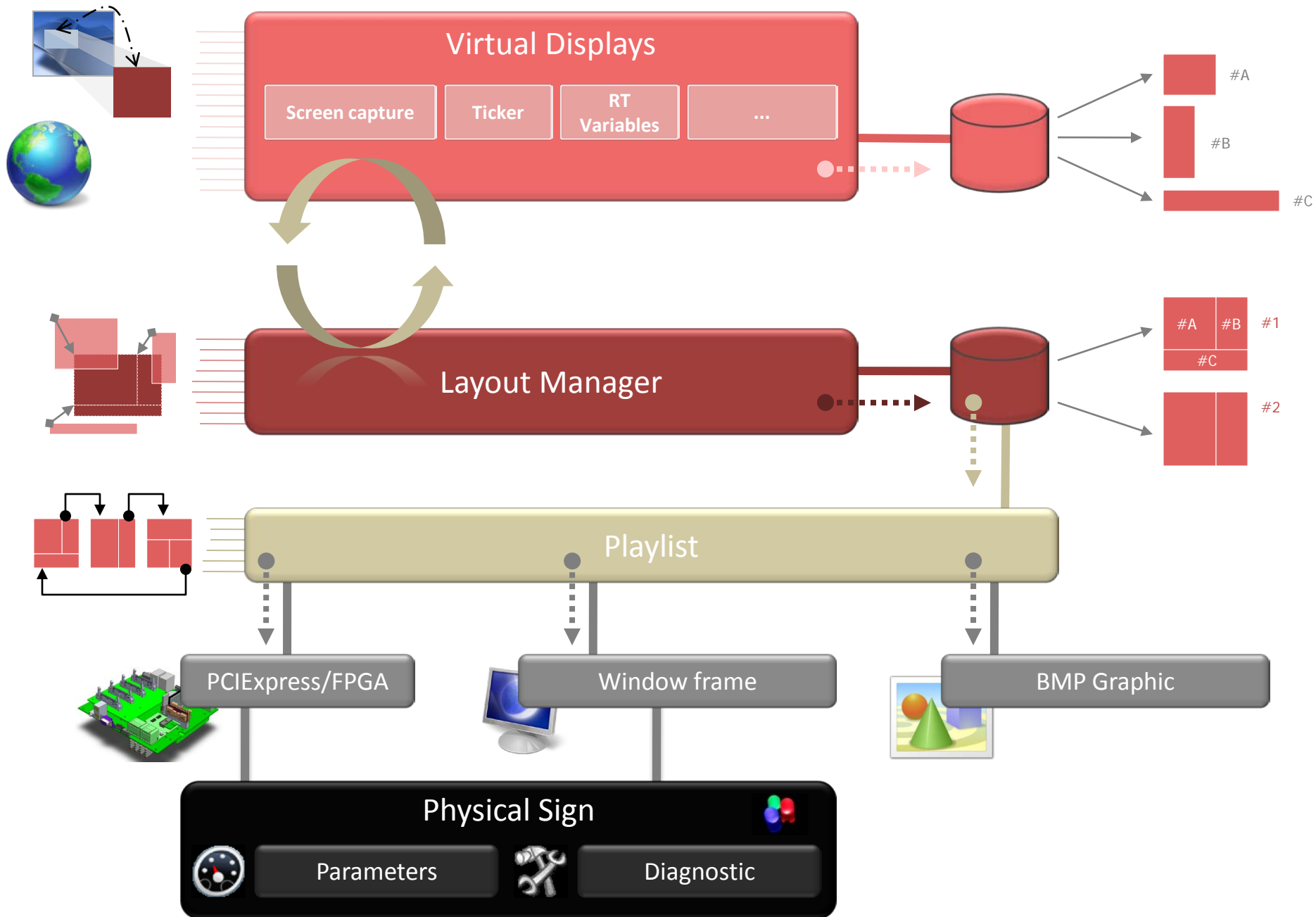
- Engine allowing to send the information & the video to the sign
- Collect data (screen capture, RSS links, ...), build images and send the result to either the **DVI-D** output or the **LEDs Drivers Boards LEDs** interfaces

Virtual Display: *it's a region of the physical sign fully independent from the others which manages its own way to operate in terms of contents (video, images, text, variables, ...) and scheduling*

Layout: *it's the result of several virtual display juxtaposition on an image which has the same size of the physical sign's screen surface*

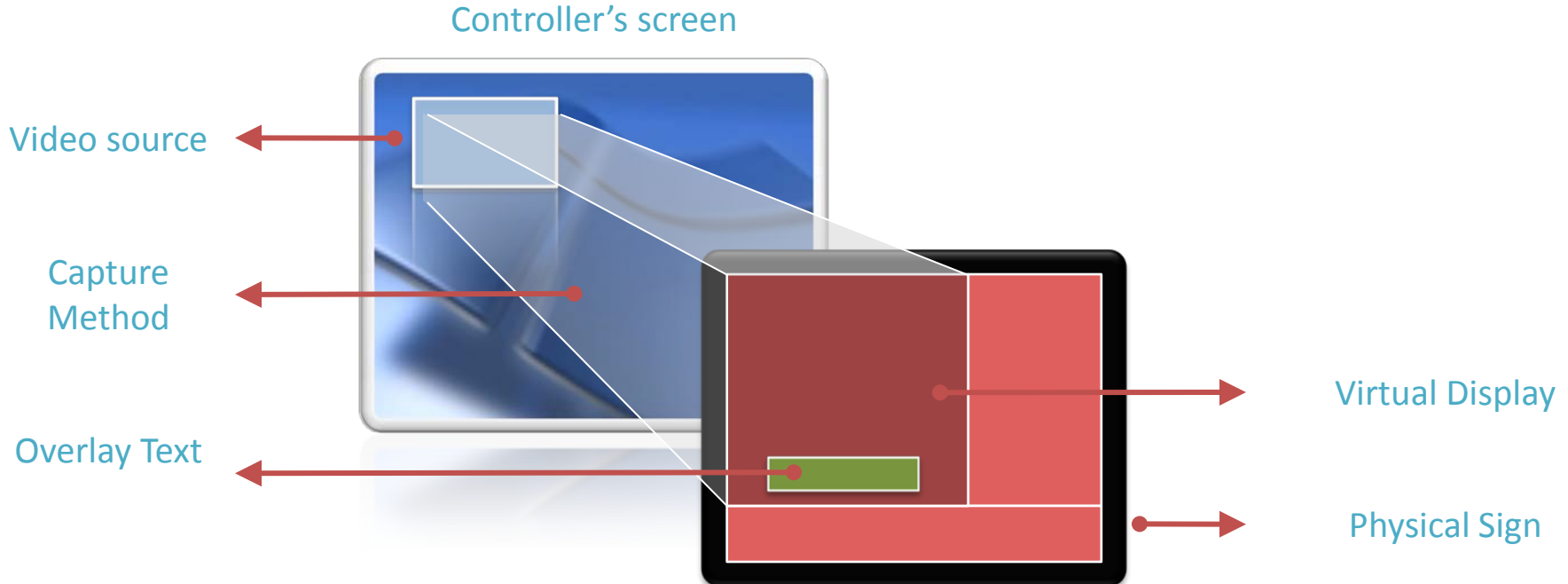
Playlist: *it's a mechanism which cyclically runs layouts according to a scheduler or an external event*







- **Capture** a video source located on the controller's screen at X, Y
- Copy the video source to the virtual display by using an appropriated and provided capture **method**
- Possibility to **overlay** text on the video source at X, Y

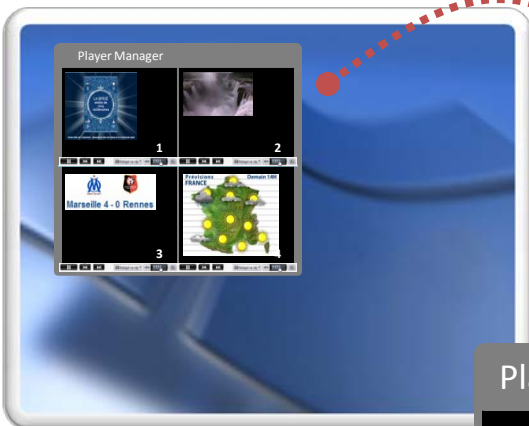




- Manage data sources such as video, graphics and texts
- Allow the execution of 4 players at the same time
- Two player families
 - **Standards** (3rd party)
 - ✓ Windows Media Player
 - ✓ VLC
 - ✓ Web Browser
 - ✓ Live Vidéo
 - **Developed by Adaptive**
 - ✓ Picture Player
 - ✓ Animation Player
 - ✓ Sport Player
 - ✓ Real Time Data Player
 - ✓ ALPHANet Pro
 - ✓ Ooh!Media
 - ✓ ...

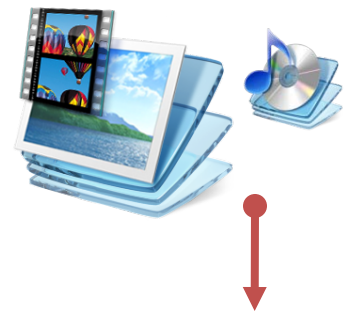


Controller's screen



Files

Images, Video, Films, Messages, Music, ...



Player Manager

<p>1</p>	<p>2</p>
<p>3</p>	<p>4</p>

Picture Player



Sport Player



Windows Media Player

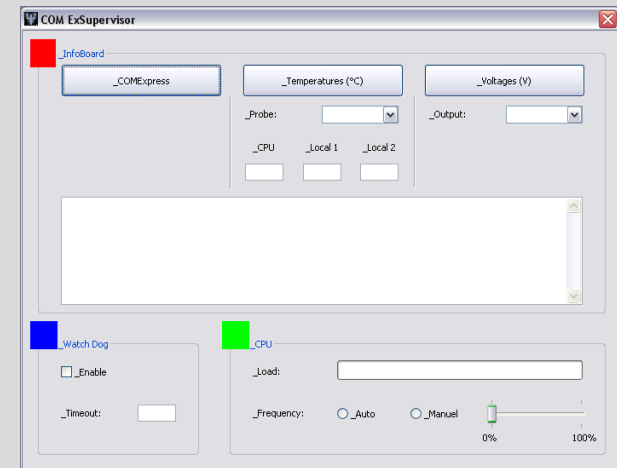
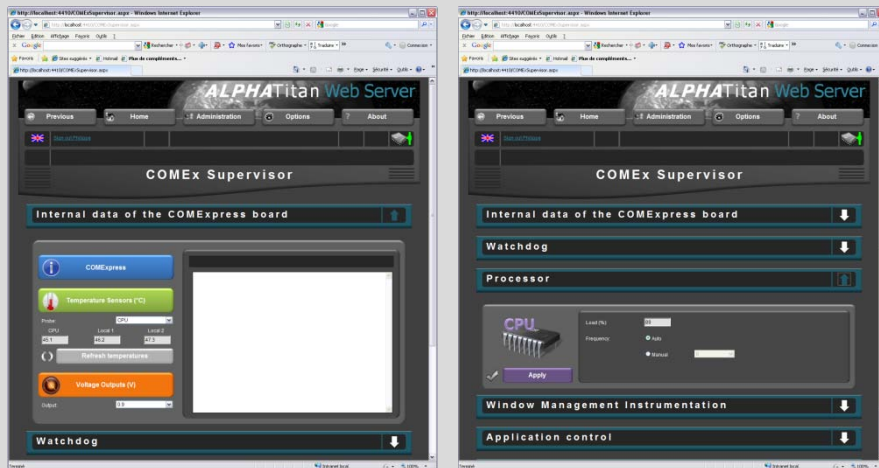


Browser

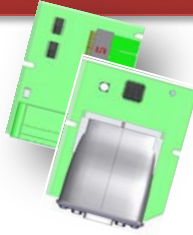




- Supervision & Diagnostic of the PC COMExpress module
- Visualize manufacturer's data
- Monitor the internal Temperatures (CPU, Chipset)
- Monitor the internal Voltages
- Visualize the processor's load



- Supervision & Diagnostic of the LEDs Drivers Boards
- Monitor the luminosity
- Monitor each LEDs Driver Boards
- ...



- Use the ALPHACallisto business daughter boards in order to acquire data and signals from industrial systems
- Update a variable database used by the modules such as the Player Manager
- Possibility to plug the following boards:
 - x8 Discrete inputs
 - x2 Analog inputs
 - x1 Industrial network
(Profibus-DP, Modbus ASCII-RTU-TCP, DeviceNet, ...)

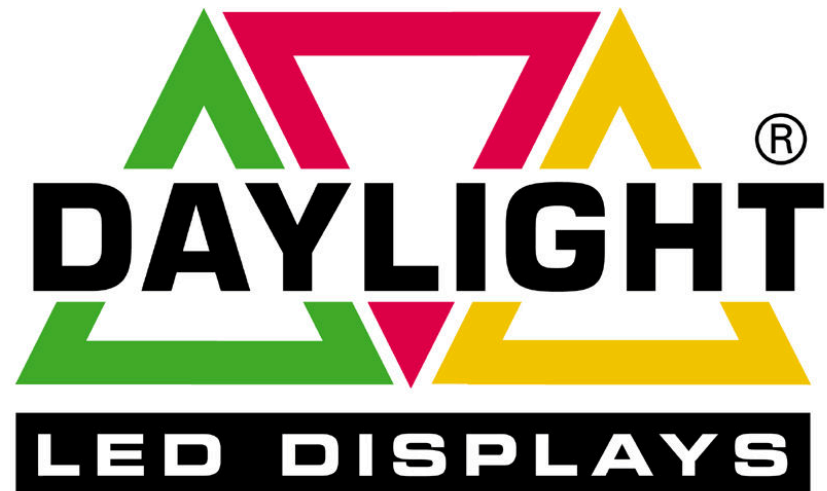
Daylight bvba
Brusselsesteenweg 715
9050 GENTBRUGGE
Belgie

URL: www.daylight.be

Email: info@daylight.be

Tel : +32 9 230 54 00

Fax : +32 9 230 96 19



www.daylight.be