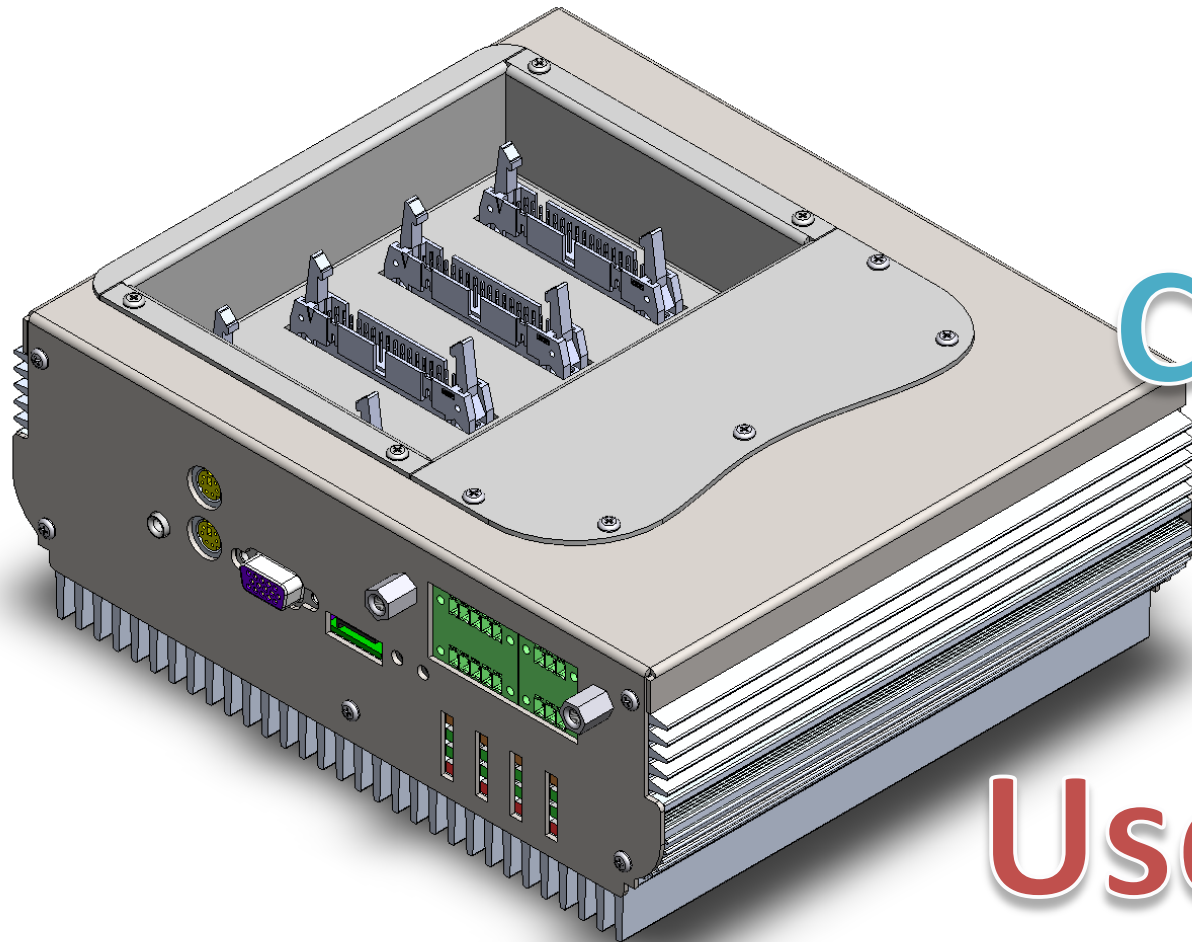


ADAPTIVE

Adaptive Micro Systems Europe



TitanETX Controller

User Guide

It is strongly recommended to read the documentation before to play with the sign. You will learn all the basics which will help you to better use the new features & functions available on the new TitanETX controller

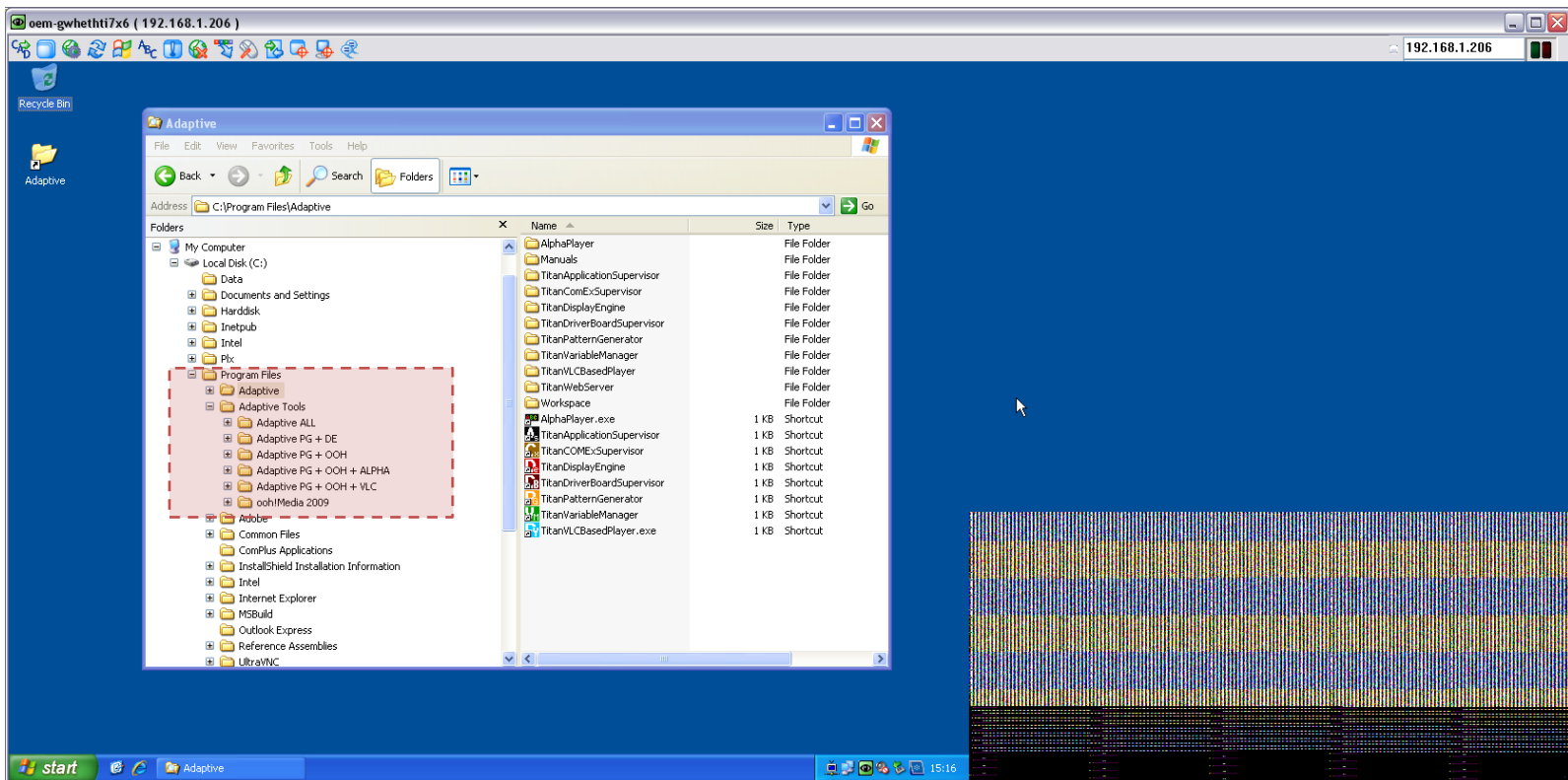
If you need more assistance, please contact the **Adaptive's Tech Support**

www.ams-e.com

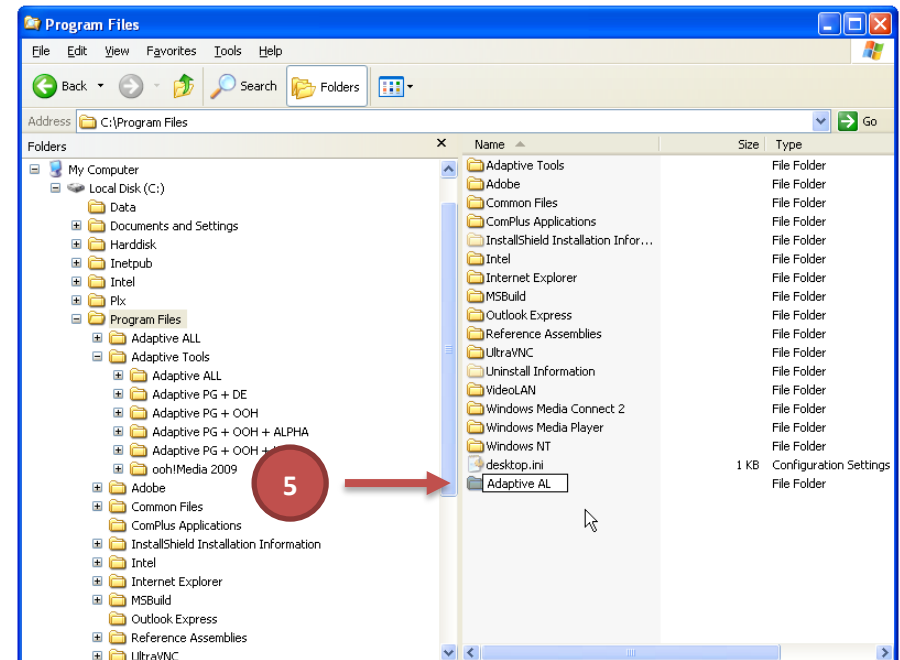
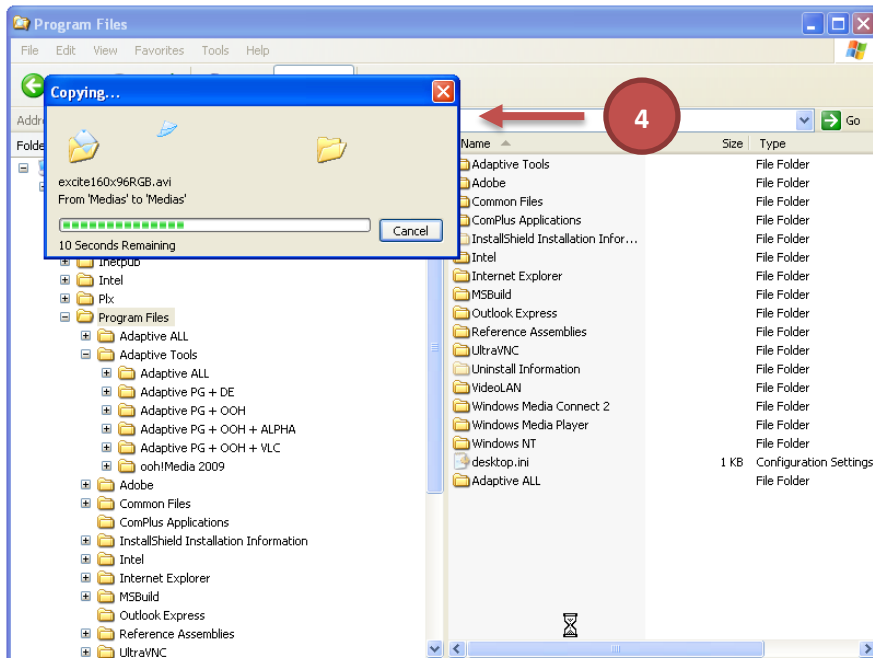
- ➔ Titan Hardware
- ➔ Titan Software Suite
- ➔ Pre configured directories concept
- ➔ Player activation
- ➔ ALPHA & StreetSmart sign operations
- ➔ Excite sign operations

ALPHA[®]*StreetSmart.***excite**[™]

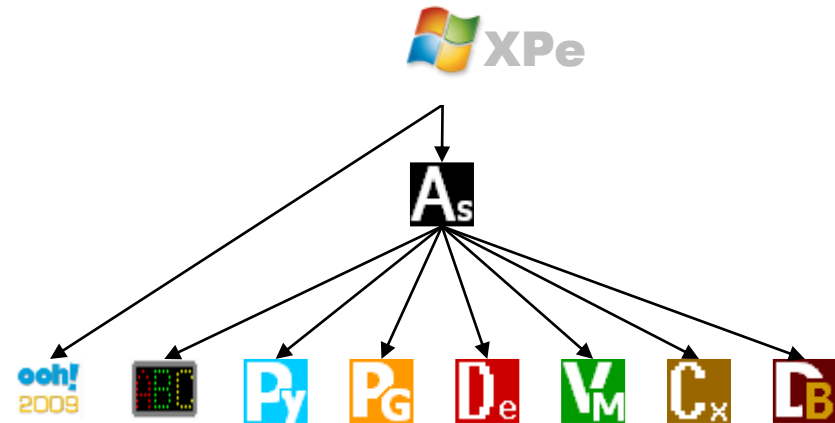
- Adaptive installs a couple of **pre configured directories** on the system in order to help the user to quickly setup his system
 - Adaptive **ALL** (All Players are running)
 - Adaptive **PG** (Pattern Generator) + **DE** (Display Engine)
 - Adaptive **PG** (Pattern Generator) + **OOH** (Ooh!Media Player)
 - Adaptive **PG** (Pattern Generator) + **OOH** (Ooh!Media Player) + **ALPHA** (ALPHA Player)
 - Adaptive **PG** (Pattern Generator) + **OOH** (Ooh!Media Player) + **VLC** (VLC Based Player)
- These directories are located at **C:\Program files\Adaptive Tools**



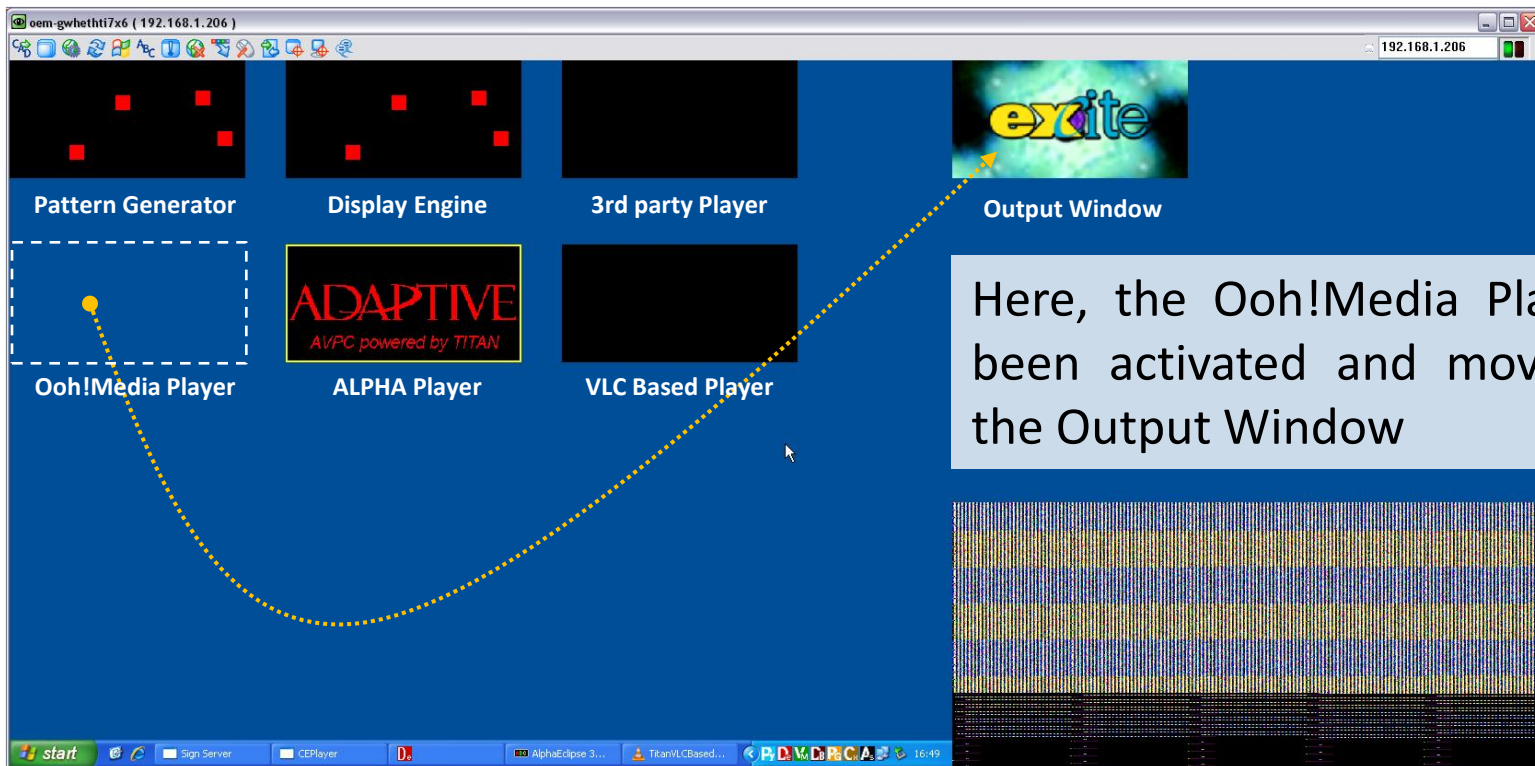
- To install one of these directories, go through the following steps:
 1. Connect to the sign using Ultra-VNC (factory IP : 192.168.1.150)
 2. Shut down all applications (tray icons)
 3. Delete the existing C:\Program files\Adaptive\ directory
 4. Copy the desired pre configured directory to C:\Program files\
 5. Rename the pre configured directory to Adaptive
 6. Reboot the sign



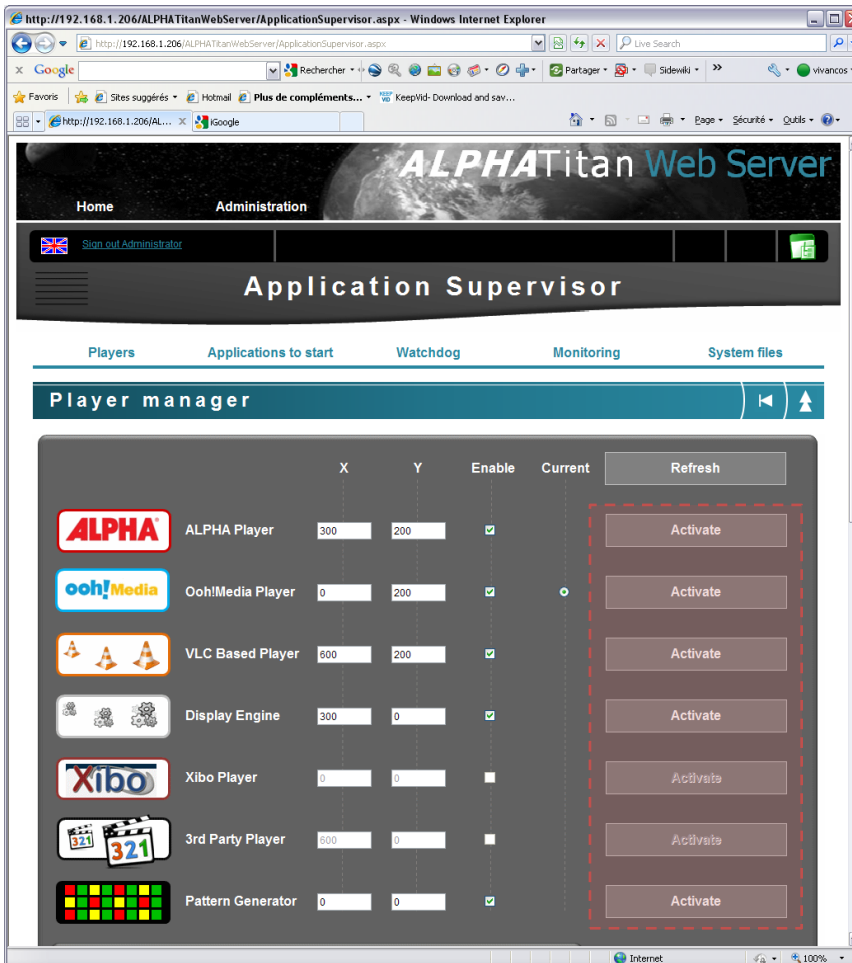
- When the sign boots, the **Application Supervisor** automatically starts a set of applications based on the content of the pre configured directory discussed above










- The **Players** are opened and arranged on the primary monitor as follow:



- From a web browser, call the **Web Server login page**:
 - Address : <http://192.168.1.150/ALPHATitanWebServer/login.aspx>
 - User name: Administrator
 - Password : admin
- From the **Application Supervisor** web page, activate the desired Player



The screenshot shows the ALPHATitan Web Server Application Supervisor web page. The page has a navigation menu with options: Home, Administration, Sign out Administrator, and a Microsoft logo. Below the navigation menu is the 'Application Supervisor' title and a set of tabs: Players, Applications to start, Watchdog, Monitoring, and System files. The 'Players' tab is selected, showing a 'Player manager' section. This section contains a table with columns for X, Y, Enable, Current, and a Refresh button. The table lists several players, each with an 'Activate' button. The 'Activate' buttons are highlighted with a red dashed box.

	X	Y	Enable	Current	Refresh
 ALPHA Player	300	200	<input checked="" type="checkbox"/>		Activate
 Ooh!Media Player	0	200	<input checked="" type="checkbox"/>		Activate
 VLC Based Player	600	200	<input checked="" type="checkbox"/>		Activate
 Display Engine	300	0	<input checked="" type="checkbox"/>		Activate
 Xibo Player	0	0	<input type="checkbox"/>		Activate
 3rd Party Player	600	0	<input type="checkbox"/>		Activate
 Pattern Generator	0	0	<input checked="" type="checkbox"/>		Activate

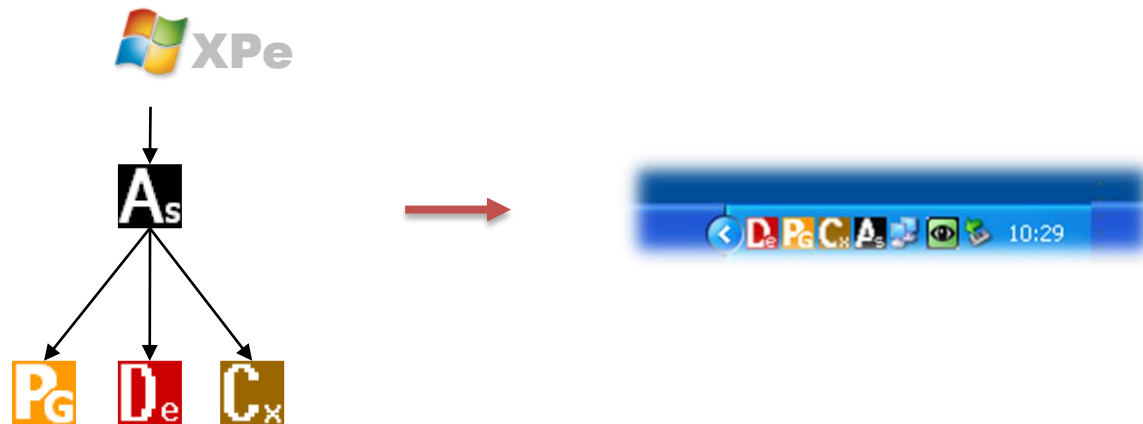
The activation of a Player consists in moving and placing it over the Output Window

ALPHA[®]

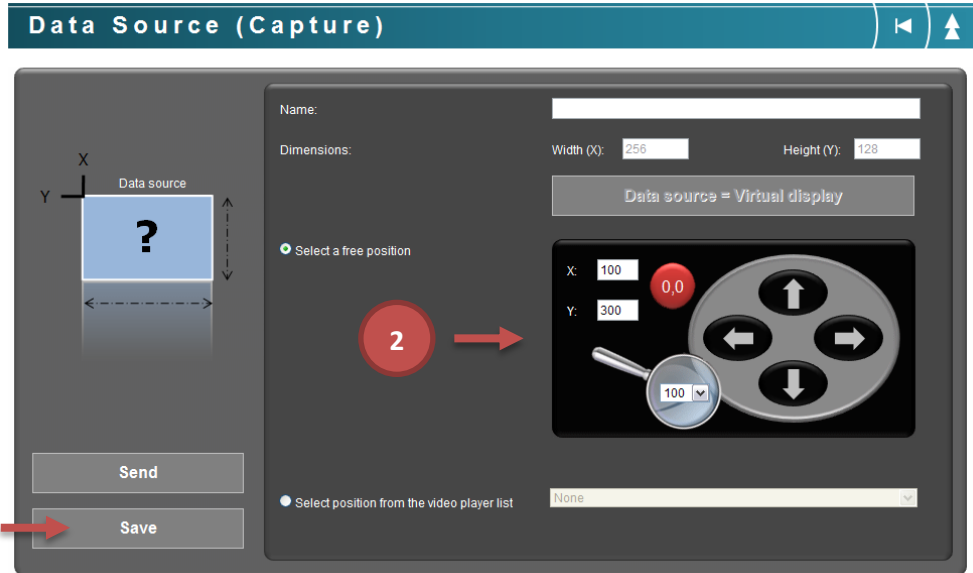
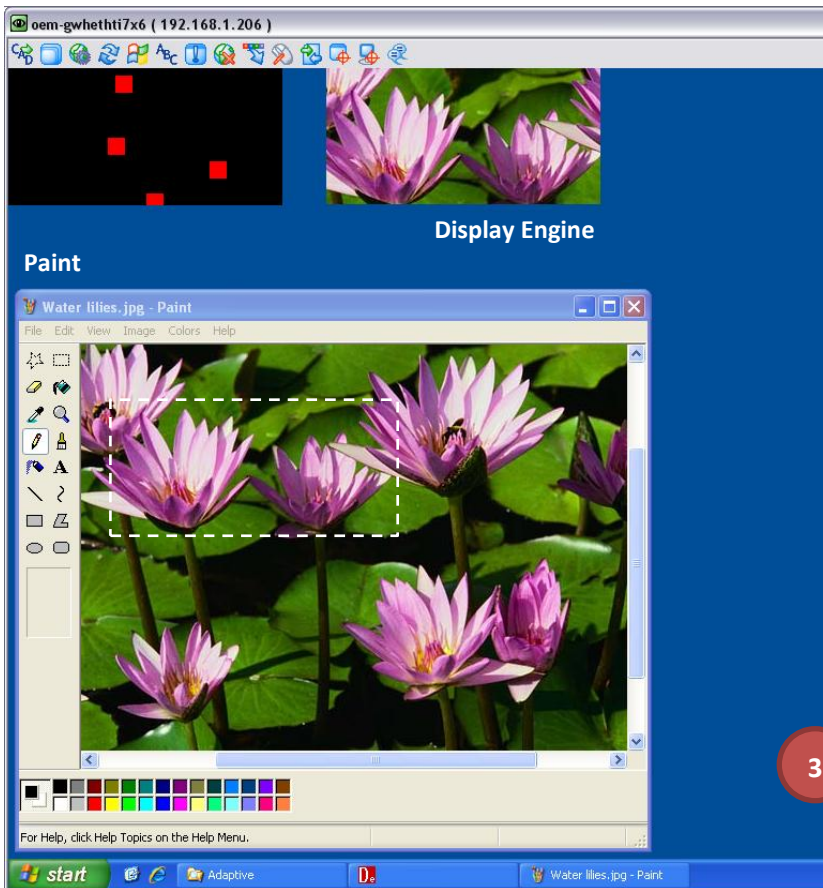
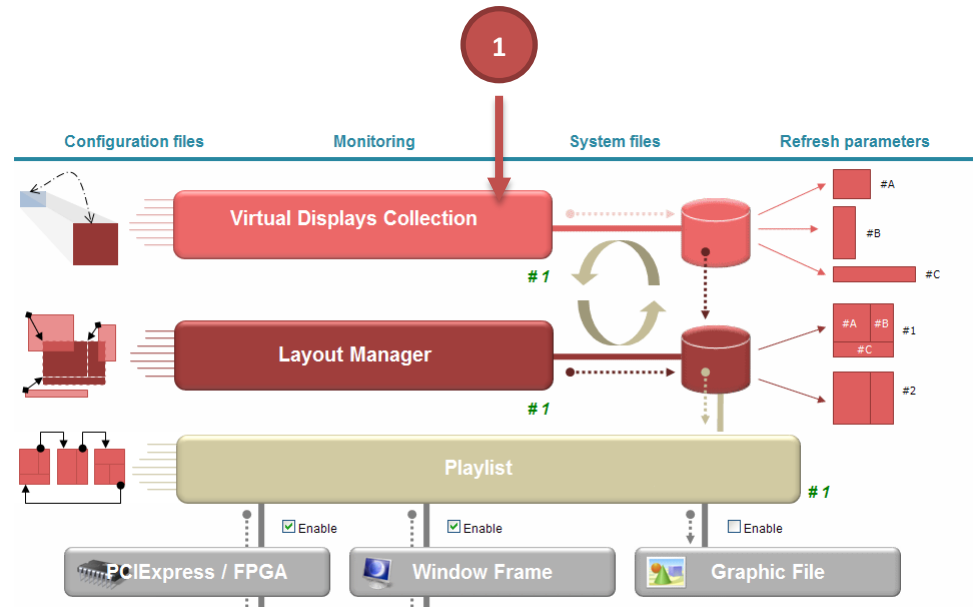
ALPHA & StreetSmart sign operations

StreetSmart[™]

- These two types of signs are driven by the **LEDs Driver Board Interfaces**
- The **Output Window** is managed by the Display Engine which sends the data to the onboard hardware (PCI Bridge + FPGA)
- The **Display Engine** must be configured to capture the right video sources on the screens
- **Video sources** can be either the Players provided by Adaptive or a specific application used and/or provided by the customer
- The **pre configured directory** used in that case is:
Adaptive PG (Pattern Generator) + DE (Display Engine)
- The **Application Supervisor** starts the following applications:



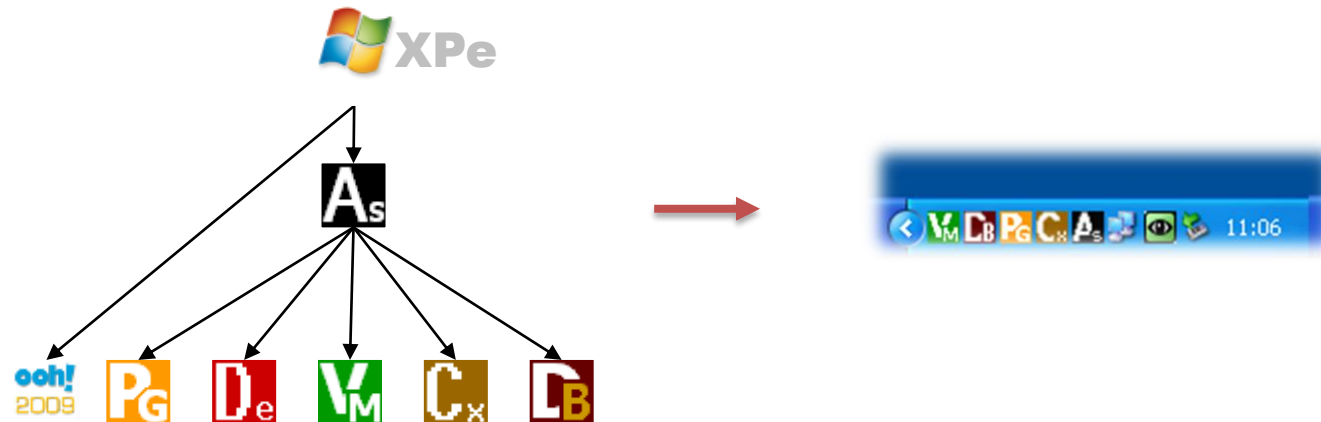
1. From the Display Engine home page, open the Virtual Display web page
2. Setup the data source coordinates
3. Save the configuration





Excite sign operations

- This type of sign is driven by the **DVI-D output**
- The **Output Window** must be always located to the top-left corner of the extended desktop
- **Video sources** can be either the Players provided by Adaptive or a specific application provided by the customer
- In both cases, the Player must be moved to the Output Window in order to be seen on the sign
- The **pre configured directory** used in that case is:
Adaptive PG (Pattern Generator) + OOH (Ooh!Media Player)
- The **Application Supervisor** starts the following applications:





Headquarter USA

Milwaukee, WI

USA



Production Plant USA

Jackson, WI

USA



Production Plant Malaisie

Alor Setar, Kendah

MALAYSIA



**European Subsidiary
Europe**

38320 Eybens

FRANCE

Office Ile de France

92300 Levallois-Perret

FRANCE

Office Sud Ouest

33240 Saint Laurent d'Arce

FRANCE